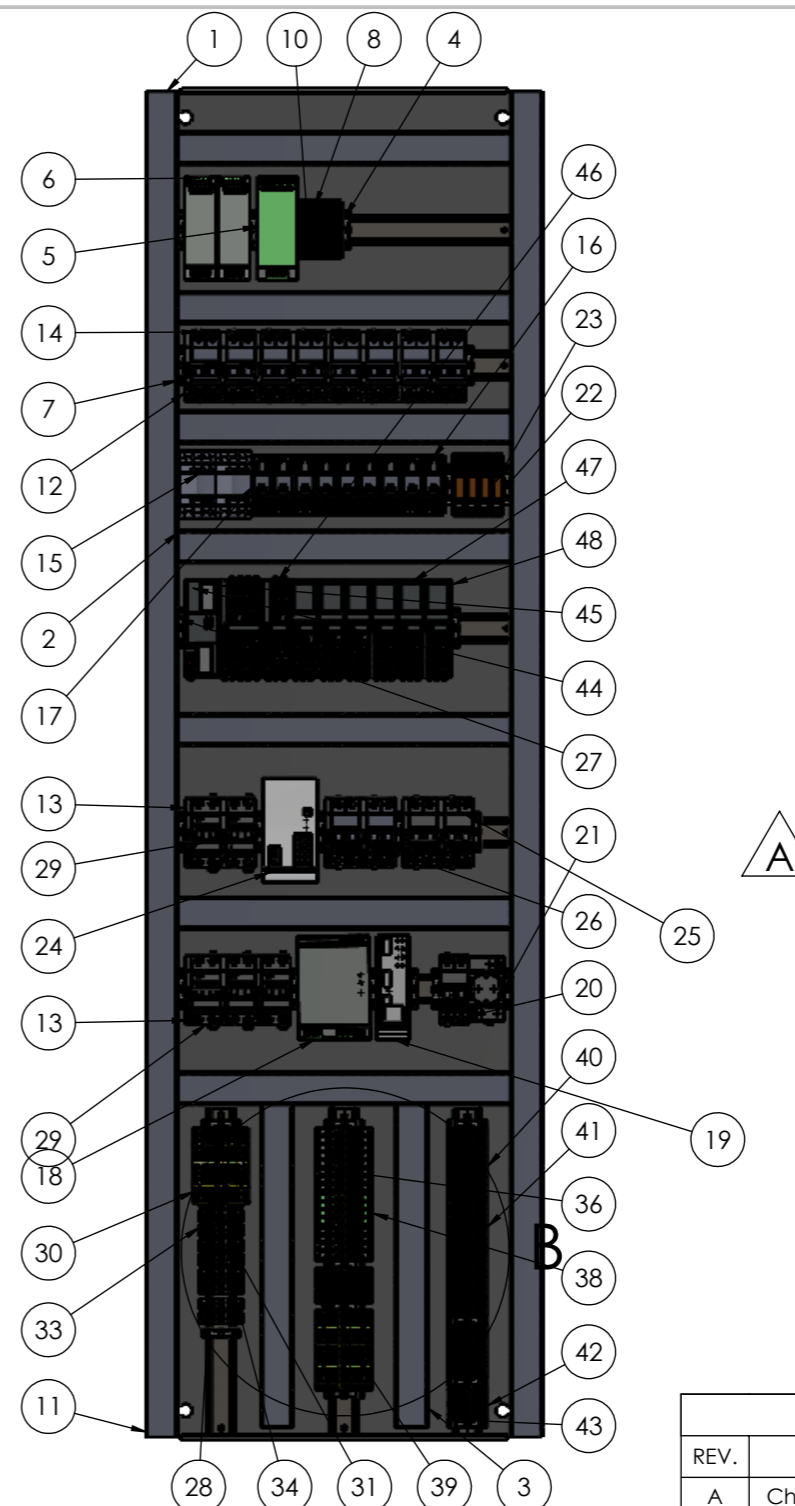


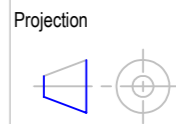
ITEM NO.	DESCRIPTION	PartNo	SW-File Name(File Name)	QTY.
1	Mounting plate		CAD_MPL_401A117308	1
2	Cable duct 40x40mm	50293009	Ledningskanal 40x40x399	7
3	Cable duct 40x40mm	50293009	Ledningskanal 40x40x399	2
4	TERMINAL RAIL SS35 313MM	NA	SS35 420mm	4
5	Quint-Diode/12-24DC/2x20/1x40	S503326	2320157_QUINT_DIODE_12_24DC_2X20_1X40-select.1	1
6	Power Supply Quint-PS/1AC/24DC/5 SFB	50860128	2866750_QUINT_PS_1AC_24DC_5-select	2
7	End stopper E-NS-35-N	50281014	0800886_e-ns-35-n_select	31
8	Phønix Rækkelemme ST2.5 Quattro	50281138	ST-2-5-QUATTRO	10
9	Phønix Endeplate D-ST 2.5 Quattro	50281139	D-ST-2-5-QUATTRO	3
10	Cross-connection FBS 5-5	50281441	3030190_FBS-5-5_3D	2
11	Cable duct 75x75mm	50293009	Ledningskanal 40x40X1353	2
12	Auxiliary contact iOF		a9a26924	8
13	Auxiliary contact iOF		a9a26924	9
14	Miniature circuit breaker 6A		a9f06206	8
15	Contacto 25AC1 2N0/2NC 24DC LC1D128BD	50231086	contacto_LC1D128BD	2
16	Relay socket		Socket PT78720	9
17	Relay		Relay PT270024	9
18	Power Supply QUINT-PS/1AC/24DC/20	50860141	2866776_quint_p1ac_24dc_20-select_	1
19	Electronic circuit breaker CBM E4 24VDC	51070155	2905743_CBM_E4_24DC_0.5_10A_Select	1
20	Miniature circuit breaker 2A		a9f07202	1
21	Socket 230V 10A		a9a15310	1
22	Relay socket		RT78726	4
23	Power Relay 24VDC		RT424024	4
24	Quint PSU DC/DC 24DC 24DC 20A	50860142	2903151_TRIO_PS_2G_1AC_24DC_20-select	1
25	Circuit Breaker 2P 16A	50860059	a9f06216	2
26	Circuit breaker 2P 06A	50860055	a9f06206	2
27	TERMINAL RAIL SS35 300MM	-	SS35	2
28	TERMINAL RAIL SS35 313MM	-	SS35	3
29	Circuit Breaker 2P 10A	50860201	a9d47210	5
30	Terminal ST6		3031487_06_ST-6	16
31	Earth terminal ST 6 PE	50281174	3031500_ST_6_PE-select	7
32	End plate DST6	50292102	3030433_D_ST_6-select	3
33	Terminal ST 4	50281171	3031364_ST_4-select	16
34	Earth terminal ST 4 PE	50281174	3031380_ST_4_PE-select	8
35	Partition plate D-ST 4	50281176	3030420_d_st4	1
36	Terminal ST 10	50281048	3036110_ST_10-select	12
37	End plate DST10		3036644_d_st10	3
38	Earth terminal ST 10 PE	50281459	3036136_ST_10_PE-select	4
39	Terminal PT 2.5 Quattro		3209578_pt25_quattro-select	8
40	Terminal ST 2,5	50281181	ST_2.5-select	54
41	Endplate D ST 2,5	50281184	3030417_d_st25_2	12
42	Terminal PT 2,5		3209510_PT_2.5-select	8
43	Phønix Endeplate D-ST 2.5	50281184	d-st_2.5_select	1
44	AXC 2152 Controller		pxc_2404267_14_AXC-F-2152_3D	1
45	AXL DI64 Digital Input Module		pxc_2701450_02_AXL-F-DI64-1-2F_3D	1
46	AXL DO32 Digital Output Module		pxc_1004925_02_AXL-F-DO32-1-2H_3D	1
47	AXL RS UNI Serial Module		pxc_2688666_04_AXL-F-RS-UNI-1H_3D	5
48	AXL AI4 Analog Input Module		pxc_2688491_05_AXL-F-AI4-I-1H_3D	1



REVISIONS			
REV.	DESCRIPTION	DATE	SIGN
A	Changed type of circuit breakers	30.04.2021	CKR



R. Stahl Tranberg AS  
Strandsvingen 6, N-4032 Stavanger, Norway  
Luhrtoppen 2, N-1470 Lørenskog, Norway  
info.no-st@r-stahl.com  
www.stahl-tranberg.com



Unless otherwise specified:  
Dimensions are in mm.  
Tolerances according to  
ISO 2768-M

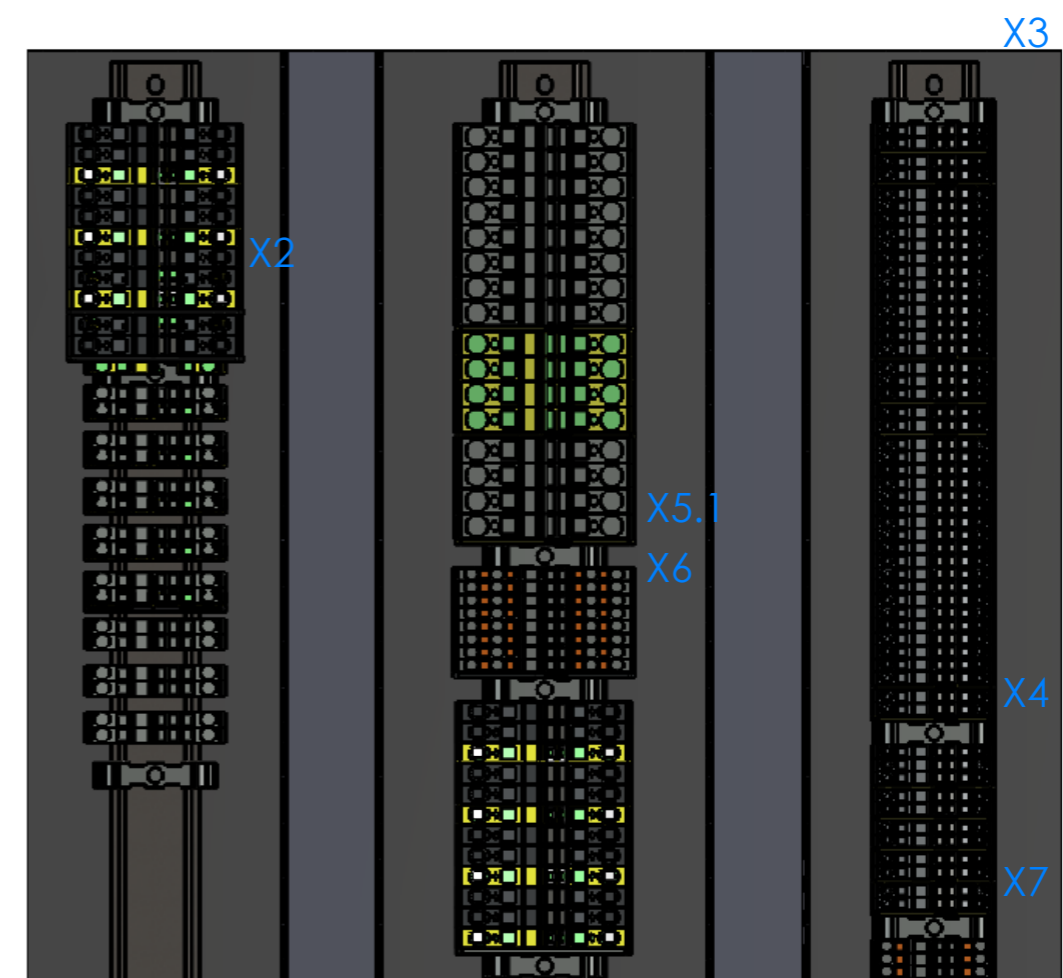
TEF 4600 371 All functions  
GA Interior

Drw. no.:	<b>401A117916</b>	Rev.	<b>A</b>
Subst. for:		Format	<b>A3</b>
Sheet name:	<b>Sheet1</b>		
Scale:	<b>1:9.5</b>		
Date:	<b>04.01.2021</b>		
Design:	<b>FO</b>		

The information contained in this drawing is the sole property of R. Stahl Tranberg AS. Any reproduction in part or as a whole without the written permission of R. Stahl Tranberg AS is prohibited.

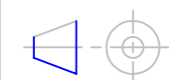
Terminal rail X1	Terminal rail X3	Terminal rail X4	Terminal rail X6
-X1.1	-X3.1	-X4.1	-X6.1
-X1.2	-X3.1	-X4.2	-X6.2
PE	End cover	-X4.3	PE
-X1.3	-X3.2	End cover	-X6.3
-X1.4	-X3.2	-X4.4	-X6.4
PE	End cover	-X4.5	PE
-X1.5	-X3.3	End cover	-X6.5
-X1.6	-X3.4	-X4.6	-X6.6
PE	-X3.5	-X4.7	PE
End cover	-X3.6	End cover	-X6.7
-X1.7	-X3.7	-X4.8	-X6.8
-X1.8	-X3.8	-X4.9	PE
End cover	-X3.9	End cover	
	-X3.10	-X4.10	Terminal rail X6
Terminal rail X2	-X3.11	-X4.11	-X6.1
-X2.1	-X3.12	End cover	-X6.2
-X2.2	-X3.13		PE
PE	-X3.14	Terminal rail X5.1	-X6.3
-X2.3	-X3.15	-X5.1	-X6.4
-X2.4	End cover	-X5.1	PE
PE	-X3.16	-X5.2	-X6.5
-X2.5	-X3.17	-X5.2	-X6.6
-X2.6	-X3.18	-X5.3	PE
PE	End cover	-X5.3	-X6.7
-X2.7	-X3.19	End cover	-X6.8
-X2.8	-X3.20	-X5.4	PE
PE	End cover	-X5.5	
-X2.9	-X3.21	-X5.6	Terminal rail X7
-X2.10	-X3.22	-X5.7	-X7.1
PE	-X3.23	-X5.8	-X7.2
-X2.11	-X3.24		-X7.3
-X2.12	-X3.25	Terminal rail X5.2	-X7.4
PE	-X3.26	-X5.2 "+"	-X7.5
-X2.13	-X3.27	-X5.2 "-"	-X7.6
-X2.14	-X3.28	PE	-X7.7
PE	-X3.29	-X5.2 "+"	-X7.8
-X2.15	-X3.30	-X5.2 "-"	
-X2.16	-X3.31	PE	
PE	-X3.32	-X5.2 "+"	
	-X3.33	-X5.2 "-"	
	-X3.34	PE	
	-X3.35	-X5.2 "+"	
	-X3.36	-X5.2 "-"	
	-X3.37	PE	
	-X3.38		
	-X3.39		
	End cover		
	-X3.40		
	-X3.41		
	End cover		

X1 DETAIL X5.2



R. Stahl Tranberg AS  
 Strandsvingen 6, N-4032 Stavanger, Norway  
 Luhrtoppen 2, N-1470 Lørenskog, Norway  
 info.no-st@r-stahl.com  
 www.stahl-tranberg.com

Projection

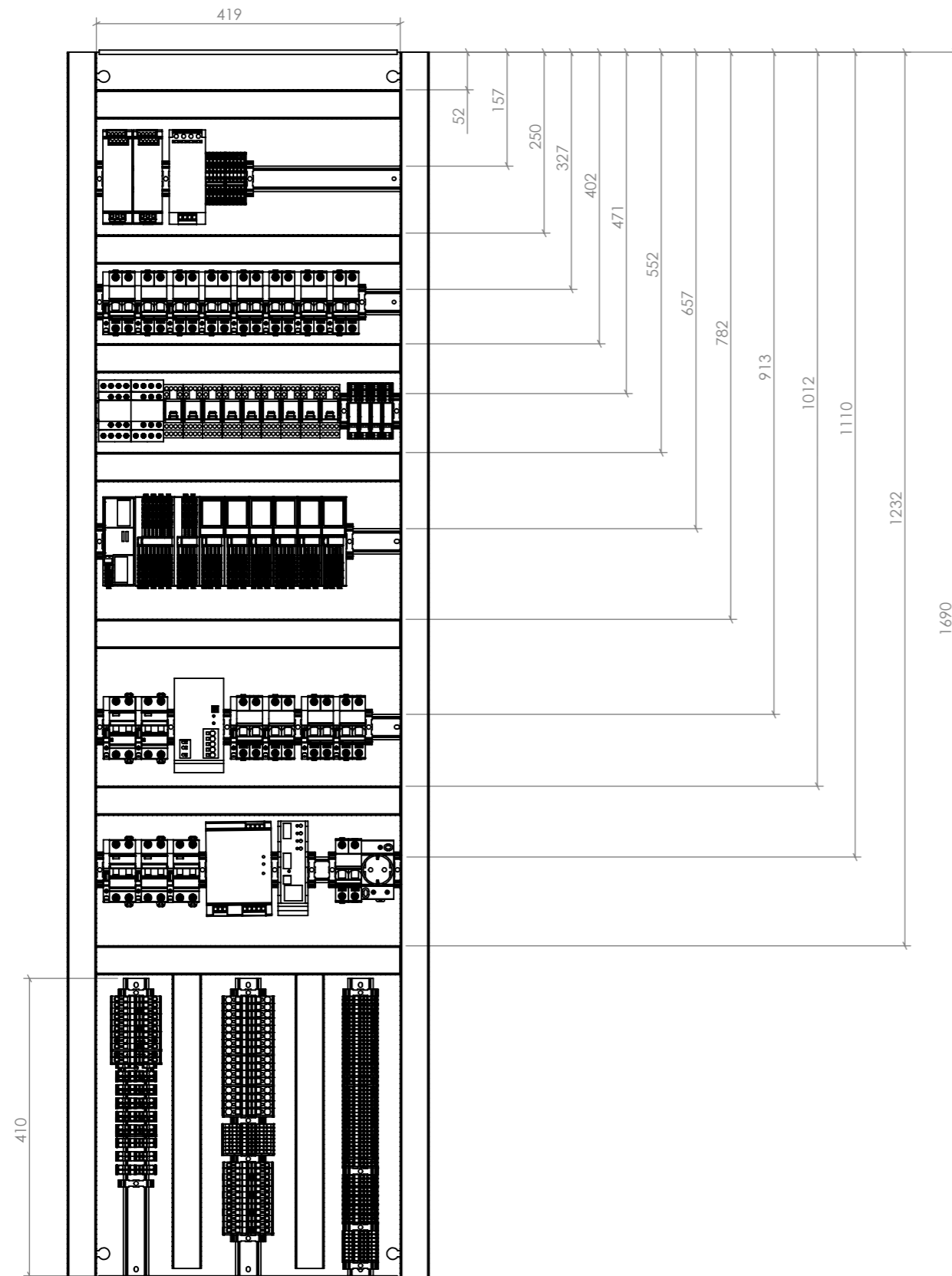


Unless otherwise specified:  
 Dimensions are in mm.  
 Tolerances according to  
 ISO 2768-M

TEF 4600 371 All functions  
 GA Interior

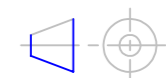
Drw. no.:	Rev.
<b>401A117916</b>	<b>A</b>
Subst. for:	Format
Sheet name: <b>Sheet2</b>	<b>A3</b>
Scale: <b>1:3</b>	
Date: <b>04.01.2021</b>	
Design: <b>FO</b>	

The information contained in this drawing is the sole property of R. Stahl Tranberg AS. Any reproduction in part or as a whole without the written permission of R. Stahl Tranberg AS is prohibited.



R. Stahl Tranberg AS  
 Strandsvingen 6, N-4032 Stavanger, Norway  
 Luhrtoppen 2, N-1470 Lørenskog, Norway  
 info.no-st@r-stahl.com  
 www.stahl-tranberg.com

Projection



Unless otherwise specified:  
 Dimensions are in mm.  
 Tolerances according to  
 ISO 2768-M

TEF 4600 371 All functions  
 GA Interior

Drw. no.:	Rev.
<b>401A117916</b>	<b>A</b>
Subst. for:	Format
Sheet name: <b>Sheet3</b>	<b>A3</b>
Scale: <b>1:8</b>	
Date: <b>04.01.2021</b>	
Design: <b>FO</b>	

The information contained in this drawing is the sole property of R. Stahl Tranberg AS. Any reproduction in part or as a whole without the written permission of R. Stahl Tranberg AS is prohibited.