

TRANBERG® Searchlight

TEF 2620 Halogen 1000W, Direct Operated

Safe Area



R. Stahl Tranberg's searchlights are all designed for rough environments.

It is the policy of R. Stahl Tranberg to provide products and services that meet the highest standards of quality in the industry.

Our aim is to fulfill the expectations of our customers. This requires that all products perform reliably, efficiently and in a manner that assures persisting market competitiveness.

Application

- The Halogen searchlight can be used on fishing boats, rescue vessels, tug-boats, supply ships, cargo and tank vessels.
- Dimensions and lamp power depends on type of ship and area of application.

Features and benefits

- Applicable to sub-zero temperatures of -50°C (-58°F).
- Anti-Ice version applicable to sub-zero temperatures of -52°C (61,6°F)

Options

- Spread filter
- Pedestal
- Canvas cover
- Anti-condensation heater in drum
- Anti-Ice heater in drum
- Remote controlled narrow or wide beam



Option: Searchlight with Morse Shutter



Technical Data

Control panel:	TEF 2610
Material:	Stainless steel, Toughened soda lime glass, silverplated glass.
Finish:	All white surface powder coated (RAL 9010) to 70-80uM.
Ingress protection:	IP56 (DIN40050)
Weight searchlight:	36kg
Weight pedestal:	4,8kg / 10,2kg

TPS2103 REV.F 09.12.2021 Subject to change without prior notice

R. STAHL TRANBERG AS

Main office | Strandsvingen 6 | N-4032 Stavanger, Norway | T +47 51 57 89 00 | E info.no-st@r-stahl.com | stahl-tranberg.com
Oslo office | Luhltoppen 2 | N-1470 Lørenskog, Norway | T +47 24 08 44 10 | E info.no-os@r-stahl.com | stahl-tranberg.com

TRANBERG STAHL

THE STRONGEST LINK.

TRANBERG® Searchlight

TEF 2620 Halogen 1000W, Direct Operated

Safe Area

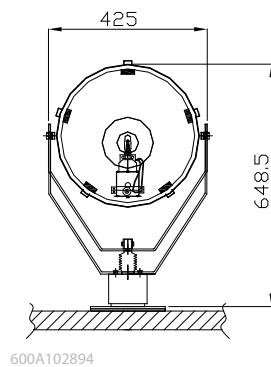
Optical

Mirror size	Watt	Volt	Peak Beam Candle Power	Range M 1 lux at target	Divergence	Pan°	Tilt°	Part no. w/motorfocus	Part no. no motorfocus
305mm (12") Halogen	1000	* 230	2,3x10 ⁶	1540	11°	370	+15 -35	262021430	2620213410
Morse Shutter									2600000017
Anti-Ice Option								Specify variant 76335 when ordering	

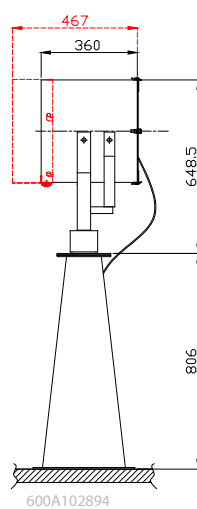
Optical Performance: All data shown above is theoretical and calculated to IES Formulae, *Other Voltage on request.

Dimensions

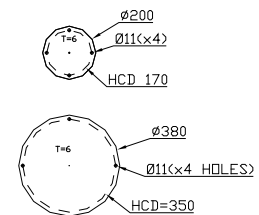
Front view without stand



Front view with stand
(Morse shutter shown in dashed line)



Dimensions on stand



600A102290