

4500 COMMANDER UTILITY RELAY OUTPUT MODULE SAFE AREA

Subject to change without prior notice TPS2144 REV. B 30.06.2017



Designed for connection of digital actuators, such as electromagnetic valves, contactors and visual indicators, or output signals to an external control system

TECHNICAL DATA

Operating temperature:	0 to +70 deg. C
Enclosure protection:	IP 20
Dimensions (WxDxH):	120x120x80mm
Weight:	0.4 kg
Control circuit:	
• Supply voltage:	18-32 VDC
• Communication:	RS-485. Cable impedance 100-250ohm. End resistors shall not be used.
Outputs	
• Supply voltage:	18-32V DC, 24-240V AC
• Load:	Resistive or small inductive loads.
• Max. load:	2 A (resistive load)
• Fuses:	No fuses in module.

FEATURES

- DIN rail mounting.
- 24 individual potential free outputs, 1 N/O contacts.
- Built-in snubber network which allows termination of a wide range of communication cable, 100-250 Ohm characteristic impedance. End resistors shall not be used.
- Alarm input: 24VDC opto-isolated, and volt-free contacts
- Alarm reset input: 24VDC opto-isolated, and volt free contacts

APPROVALS AND STANDARDS

CE-marking

TEF 4500 COMMANDER UTILITY, RELAY OUTPUT MODULE

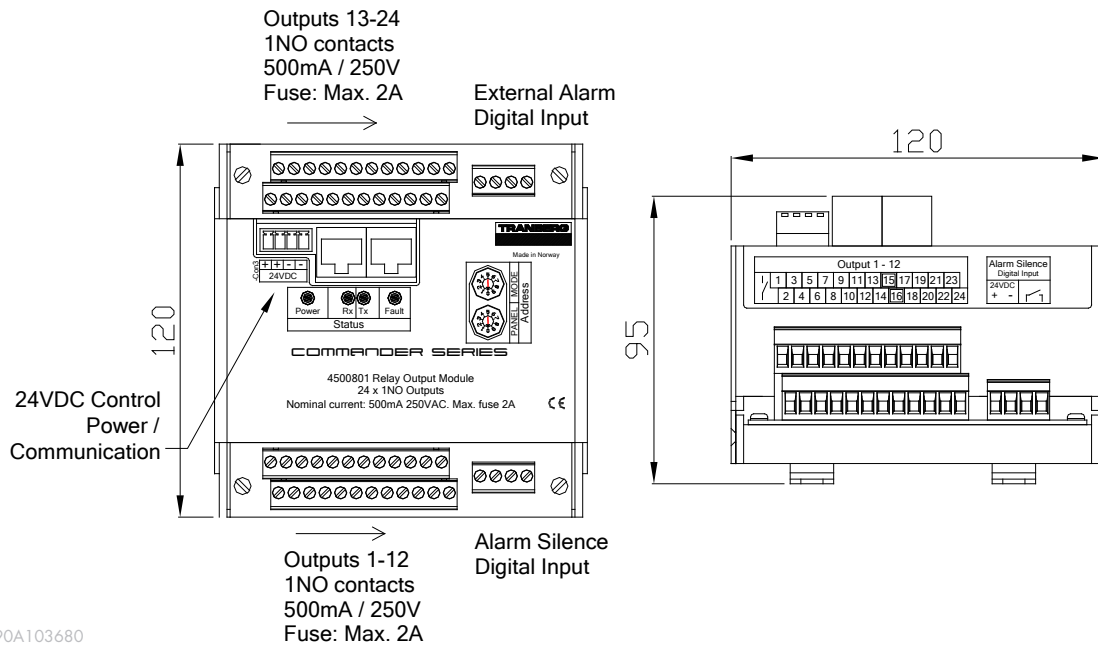
DESCRIPTION

Relay output module, 24 circuits

Part No.

4500801

DIMENSIONS



ELECTRICAL SCHEMATICS

