



JUNCTION BOX FOR INDUSTRY AND MARINE TEF 1054 OVERVIEW SAFE AREA

Subject to change without prior notice TPS2444 REV. A 30.06.2017



Stainless steel enclosures SS316L for industry and marine use, complete with cable glands and stopping plugs. Supplied as standard in bright chemical dip execution. Electro polished can be supplied against an additional cost of NOK 100,- per enclosure.

TECHNICAL DATA

Material:	AISI 316L / EN 1.4404
Finish:	Bright chemical dip
IP-rating:	IP66/67
Earthing:	Inside on terminals Outside on external earth bolt
Gasket:	EPDM
For use in Zone:	Safe area / marine

APPLICATION

- For use in industry
- For use in maritime environments
- For use in food and beverage processing

APPROVALS AND CERTIFICATES

NA

FEATURES AND BENEFITS

- Designed for use in harsh environment.
- Resistant to extreme temperatures.



R. Stahl Tranberg AS
E info@stahl-tranberg.com | stahl-tranberg.com
Main office: Strandsvingen 6 | N-4032 Stavanger | Norway | T +47 51 57 89 00 | F +47 51 57 89 50
Office Oslo: Luhrtoppen 2 | N-1470 Lørenskog | Norway | T +47 24 08 44 10

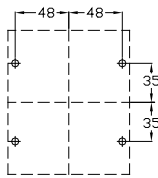
TEF 1054 JUNCTION BOX FOR INDUSTRY AND MARINE

DESCRIPTION

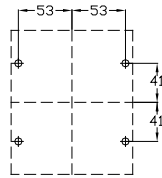
Size	Inside dimensions (HxWxD)	Outside dimensions (HxWxD)	Part no.		Part no.	
			Acidized	Acidized w/ terminal rail and earth bar	El polished	El polished w/ terminal rail and earth bar
05	100 x 80 x 50	135 x 115 x 58	10540500	10540501	10540510	10540511
10	112 x 90 x 70	147 x 125 x 78	10541000	10541001	10541010	10541011
15	112 x 140 x 70	147 x 175 x 78	10541500	10541501	10541510	10541511
20	140 x 170 x 70	175 x 205 x 78	10542000	10542001	10542010	10542011
25	140 x 218 x 100	175 x 253 x 108	10542500	10542501	10542510	10542511
30	140 x 318 x 100	175 x 353 x 108	10543000	10543001	10543010	10543011
35	180 x 218 x 100	215 x 253 x 108	10543500	10543501	10543510	10543511
40	200 x 318 x 100	235 x 353 x 108	10544000	10544001	10544010	10544011
45	250 x 318 x 100	285 x 353 x 108	10544500	10544501	10544510	10544511

DIMENSIONS AND DETAILS

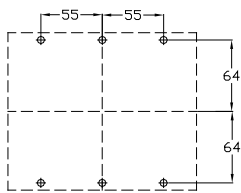
MOUNTING DIMENSIONS



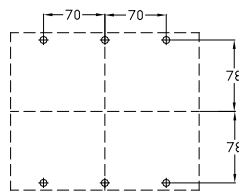
TEF 1054 SIZE 05



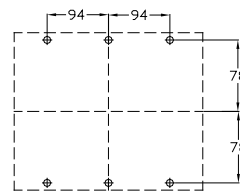
TEF 1054 SIZE 10



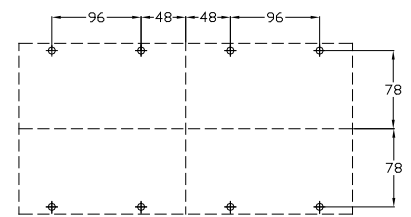
TEF 1054 SIZE 15



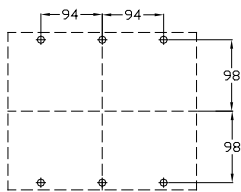
TEF 1054 SIZE 20



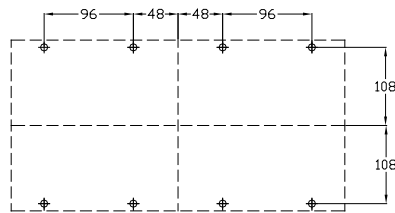
TEF 1054 SIZE 25



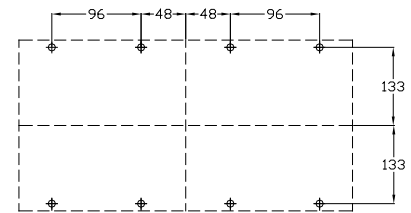
TEF 1054 SIZE 30



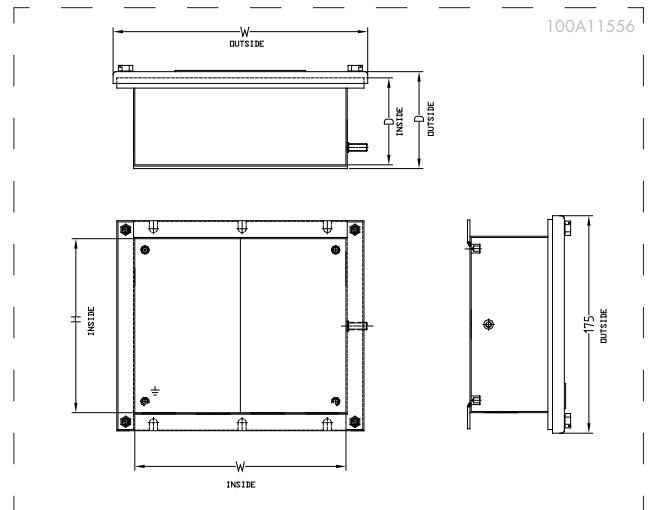
TEF 1054 SIZE 35



TEF 1054 SIZE 40



TEF 1054 SIZE 45



100A11796



R. Stahl Tranberg AS

E info@stahl-tranberg.com | stahl-tranberg.com

Main office: Strandsvingen 6 | N-4032 Stavanger | Norway | T +47 51 57 89 00 | F +47 51 57 89 50

Office Oslo: Luhrtoppen 2 | N-1470 Lørenskog | Norway | T +47 24 08 44 10