

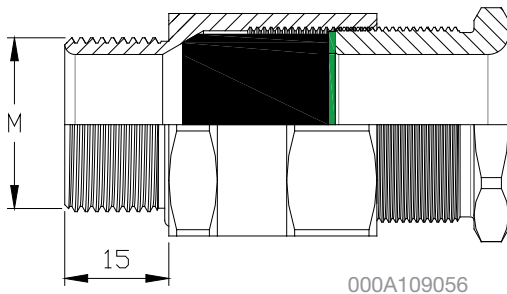
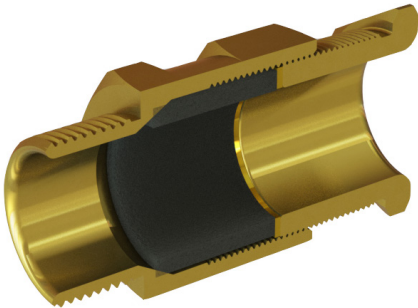
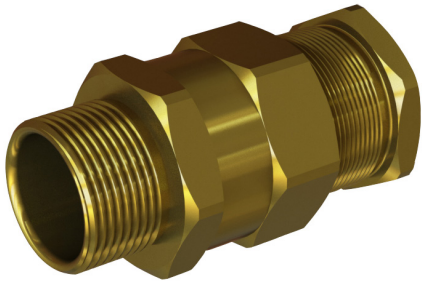
# CABLE GLAND

## TEF D621

### THROUGH GLAND, Ex e /Ex d

## ZONE 1 , ZONE 2 & SAFE AREA

Subject to change without prior notice TPS4521 REV. F 10.07.2017



Cable glands are required as a safe passage for a cable into an enclosure. Dependent on the type of enclosure and type of cable, one needs to find the cable gland that cover the requirements. STAHL TRANBERG have a wide variety of cable glands, in various designs, and available in brass or stainless steel (316).

This model is certified to both ATEX and IECEx, and in compliance with several standards. Development and manufacturing is done at our factory in Stavanger, Norway, and according to our ISO9001:2008 certification.

STAHL TRANBERG is a pioneer in serving the onshore and offshore oil and gas industry in the North Sea area. We have participated as a key supplier of robust and fit-for-purpose electro-mechanical products to almost all field development projects in Norwegian waters, and we are determined to continue as the preferred supplier for new projects, as well as maintenance and modifications projects.

#### TECHNICAL DATA

<b>Ex-protection:</b>	Ex II 2 G Ex d IIC Gb Ex II 2 G Ex e IIC Gb
<b>Ingress Protection:</b>	IP66/67 for circular cables
<b>Ambient temperature:</b>	-60°C to +135°C
<b>Material:</b>	Brass or stainless steel (AISI 316 / EN 1,4404) Silicone sealing material. PTFE gasket

#### APPLICATION

- Outdoor or indoor for unarmoured cables (Exe/Exd).
- Outdoor or indoor for armoured cables (Exe).
- Sealing on cables outer sheath only.
- Suitable for use in hazardous area, zone 1, zone 2 and safe area.

#### FEATURES AND BENEFITS

- Sealing on cables outer sheath only.
- PTFE gasket for sealing between cable gland and box / cabinet.

#### APPROVALS AND CERTIFICATES

IECEx certificate No.: IECEx PRE 14.0023

ATEX certificate No.: Presafe 14 ATEX 1532

Compliance standards:  
IEC 60079-0 Ed. 6 2011,  
IEC 60079-7 Ed. 4 2006,  
IEC 60079-1 Ed. 6 2007

# TEF D621 CABLE GLANDS Ex e/ Ex d

## DESCRIPTION

Entry Thread	Sealing Code	Clamping Range	Entry Length	Across Flats	Across Corners	Part No.: Brass	Part No. AISI 316
M16 x 1.5	A1	2.0 – 6.0 mm	15 mm	24 mm	26.7 mm	621 16 31	621 16 36
M16 x 1.5	B1	5.0 – 9.1 mm	15 mm	24 mm	26.7 mm	621 16 11	621 16 16
M16 x 1.5	B2	4.5 – 7.5 mm	15 mm	24 mm	26.7 mm	621 16 21	621 16 26
M20 x 1.5	A1	2.0 – 6.0 mm	15 mm	27 mm	30.2 mm	621 20 61	621 20 66
M20 x 1.5	B1	5.0 – 9.1 mm	15 mm	27 mm	30.2 mm	621 20 41	621 20 46
M20 x 1.5	B2	4.5 – 7.5 mm	15 mm	27 mm	30.2 mm	621 20 51	621 20 56
M20 x 1.5	C1	9.0 – 14.3 mm	15 mm	27 mm	30.2 mm	621 20 11	621 20 16
M20 x 1.5	C2	7.0 – 10.0 mm	15 mm	27 mm	30.2 mm	621 20 31	621 20 36
M20 x 1.5	C3	8.5 – 13.0 mm	15 mm	27 mm	30.2 mm	621 20 21	621 20 26
M25 x 1.5	A1	2.0 – 6.0 mm	15 mm	32 mm	36 mm	621 25 91	621 25 96
M25 x 1.5	B1	5.0 – 9.1 mm	15 mm	32 mm	36 mm	621 25 71	621 25 76
M25 x 1.5	B2	4.5 – 7.5 mm	15 mm	32 mm	36 mm	621 25 81	621 25 86
M25 x 1.5	C1	9.0 – 14.3 mm	15 mm	32 mm	36 mm	621 25 41	621 25 46
M25 x 1.5	C2	7.0 – 10.0 mm	15 mm	32 mm	36 mm	621 25 61	621 25 66
M25 x 1.5	C3	8.5 – 13.0 mm	15 mm	32 mm	36 mm	621 25 51	621 25 56
M25 x 1.5	D1	15.0 – 20.0 mm	15 mm	32 mm	36 mm	621 25 11	621 25 16
M25 x 1.5	D2	11.0 – 15.0 mm	15 mm	32 mm	36 mm	621 25 31	621 25 36
M25 x 1.5	D9	13.0 – 17.0 mm	15 mm	32 mm	36 mm	621 25 21	621 25 26
M32 x 1.5	E1	22.0 – 26.5 mm	15 mm	42 mm	47.5 mm	621 32 11	621 32 16
M32 x 1.5	E2	18.0 – 24.0 mm	15 mm	42 mm	47.5 mm	621 32 21	621 32 26
M32 x 1.5	D1	15.0 – 20.0 mm	15 mm	42 mm	47.5 mm	621 32 31	621 32 36
M32 x 1.5	D2	11.0 – 15.0 mm	15 mm	42 mm	47.5 mm	621 32 51	621 32 56
M32 x 1.5	D9	13.0 – 17.0 mm	15 mm	42 mm	47.5 mm	621 32 41	621 32 46
M40 x 1.5	E1	22.0 – 26.5 mm	15 mm	50 mm	57 mm	621 40 31	621 40 36
M40 x 1.5	T1	24.5 – 29.0 mm	15 mm	50 mm	57 mm	621 40 21	621 40 26
M40 x 1.5	F1	26.5 – 32.4 mm	15 mm	50 mm	57 mm	621 40 11	621 40 16
M50 x 1.5	I1	40.0 – 44.5 mm	15 mm	65 mm	74 mm	621 50 11	-
M50 x 1.5	I2	38.0 – 43.0 mm	15 mm	65 mm	74 mm	621 50 21	-
M50 x 1.5	G1	32.0 – 38.5 mm	15 mm	65 mm	74 mm	621 50 41	-
M50 x 1.5	G2	29.0 – 35.0 mm	15 mm	65 mm	74 mm	621 50 51	-
M50 x 1.5	H1	35.5 – 41.0 mm	15 mm	65 mm	74 mm	621 50 31	-
M63 x 1.5	J1	44.0 – 50.5 mm	15 mm	80 mm	90.5 mm	621 63 31	-
M63 x 1.5	J2	42.0 – 46.0 mm	15 mm	80 mm	90.5 mm	621 63 41	-
M63 x 1.5	K1	50.0 – 56.5 mm	15 mm	80 mm	90.5 mm	621 63 11	-
M63 x 1.5	K2	47.0 – 53.0 mm	15 mm	80 mm	90.5 mm	621 63 21	-

## ACCESSORIES

PTFE (Teflon) gasket for sealing between cable gland and box / cabinet	Size	Part No.
Gasket PTFE M16	Ø24,0/16,0x2,0	5001 0030
Gasket PTFE M20	Ø27,0/20,0x2,0	5001 0031
Gasket PTFE M25	Ø32,0/25,0x2,0	5001 0032
Gasket PTFE M32	Ø42,0/32,0x2,0	5001 0033
Gasket PTFE M40	Ø50,0/40,0x2,0	5001 0034
Gasket PTFE M50	Ø65,0/50,0x2,0	5001 0035
Gasket PTFE M63	Ø80,0/63,0x2,0	5001 0036



R. Stahl Tranberg AS

E info@stahl-tranberg.com | stahl-tranberg.com

Main office: Strandsvingen 6 | N-4032 Stavanger | Norway | T +47 51 57 89 00 | F +47 51 57 89 50

Office Oslo: Luhrtoppen 2 | N-1470 Lørenskog | Norway | T +47 24 08 44 10