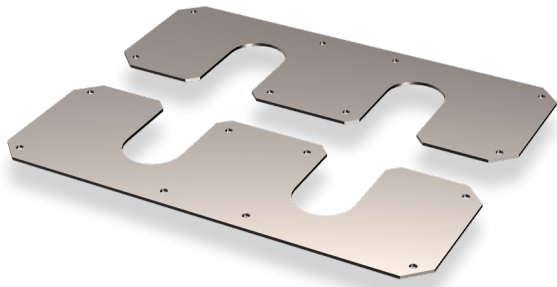


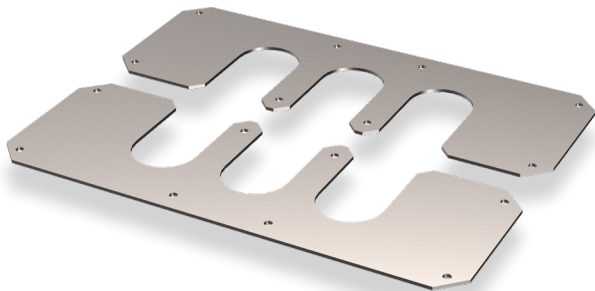
CONNECTION KIT FOR PIPE- & WALL MOUNTING CLADDING EXIT PLATES HEAT TRACE ACCESSORIES

Subject to change without prior notice TPS5104 REV. A 10.07.2017



Kit No.: 7000 083 (Includes two plates)

Cladding exit plates for a safe and tight mount of junction boxes or thermostats mounted directly on pipe



Kit No.: 7000 084 (Includes two plates)

APPLICATION

For use on double bend for pipe mounted IECEx junction boxes and thermostats.

TECHNICAL DATA

Material: AISI 316L

FEATURES AND BENEFITS

- Made in acid proof stainless steel.
- Inserted from both sides of the bend.
- Predrilled holes for screws or blind rivets.
- Mount by applying silicone compound on pplates.

WALL MOUNTED / PIPE MOUNTED CLADDING EXIT PLATES

DESCRIPTION

TEF 7731 Cladding exit plates double bend

Part No.

7000 083

TEF 7731 Cladding exit plates double bend for thermostat sensor

7000 084

