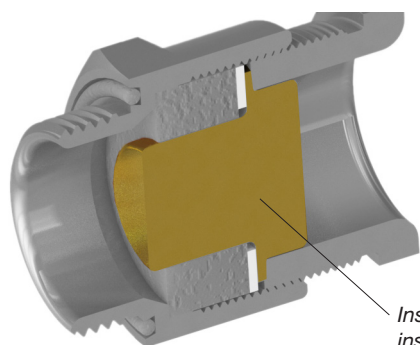
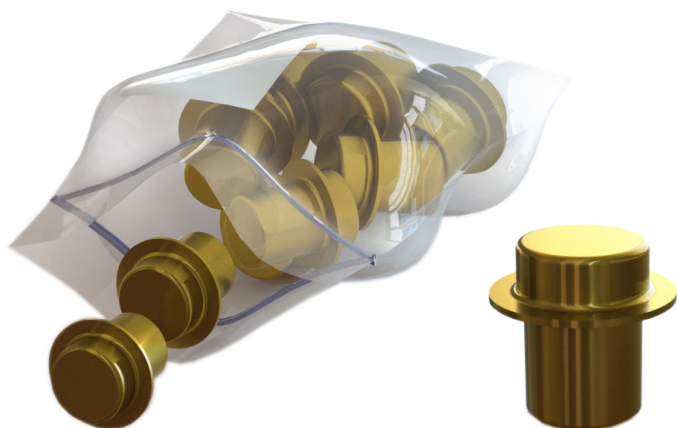


INSERT PLUG FOR TEF E204-622 & TEF E205-624 THROUGH GLANDS, Ex e ZONE 1 , ZONE 2 & SAFE AREA

Subject to change without prior notice TPS5124 REV. B 10.07.2017



Insert plug installed
inside the cable gland

Stopping plugs are required to close unused entries in enclosures. Tranberg have a wide variety of stopping plugs, in various designs, and available in brass or stainless steel (316).

This model is certified to both ATEX and IECEx (when used together with Stahl Tranberg E204-622 and E205-624 cable glands). Development and manufacturing is done at our factory in Stavanger, Norway, and according to our ISO9001:2008 certification.

Stahl Tranberg is a pioneer in serving the onshore and offshore oil and gas industry in the North Sea area. We have participated as a key supplier of robust and fit-for-purpose electro-mechanical products to almost all field development projects in Norwegian waters, and we are determined to continue as the preferred supplier for new projects, as well as maintenance and modifications projects.

TECHNICAL DATA

Ex-protection (when used w/

TEF E204-622/E205-624 Glands:

Ex II 2 G Ex eb IIC

Ingress Protection:

IP66/67

Ambient temperature:

-60°C to +135°C

Material:

Brass or Stainless steel
(AISI 316 / EN 1,4404)

APPLICATION

- For blanking the cable entry of Stahl Tranberg E204-622 & E205-624 cable gland, ensures IP66/67 until a cable is installed.

FEATURES AND BENEFITS

- Ensures IP66/67 until a cable is installed.
- Protection against dust
- Easy to remove when the cable is installed

APPROVALS AND CERTIFICATES

Only when used together with

Stahl Tranberg E204-622 & E205-624 Cable Glands:

IECEx certificate No.: IECEx NEM 13.0021X

ATEX certificate No.: NEMKO 13 ATEX 1548X

Compliance standards: IEC 60079-0 Ed. 6 2011, IEC 60079-7 Ed. 4 2006.

Special conditions for use:

- Additional clamping of cable shall be installed to ensure that pulling and twisting is not transmitted to the terminals.

BLANKING PLUG FOR TEF E204-622/E205-624 CABLE GLANDS Ex e

DESCRIPTION

Description	Part No.: Brass	Part No. AISI 316
Insert Plugs (10 pcs) for E204/E205 cable gland Size C1/C3	6127	-
Insert Plugs (10 pcs) for E204/E205 cable gland Size D2	6128	-
Insert Plugs (10 pcs) for E204/E205 cable gland Size D1/D9	6129	-
Insert Plugs (10 pcs) for E204/E205 cable gland Size E1/E2	6130	-
Insert Plugs (10 pcs) for E204/E205 cable gland Size C2	6232	-



R. Stahl Tranberg AS

E info@stahl-tranberg.com | stahl-tranberg.com

Main office: Strandsvingen 6 | N-4032 Stavanger | Norway | T +47 51 57 89 00 | F +47 51 57 89 50

Office Oslo: Lohrtoppen 2 | N-1470 Lørenskog | Norway | T +47 24 08 44 10