

TRANBERG® SEARCHLIGHTS

TEF 2630 Searchlight Commander Halogen 250W Bridge Operated

Safe Area



Tranberg's searchlights are all designed for rough environments.

It is the policy of Tranberg to provide products and services that meet the highest standards of quality in the industry and the performance needs and expectations of our customers.

Achievement of this objective requires that all products perform reliably and efficiently and in a manner that assures continuing market competitiveness.

Application

- Halogen searchlight can with advantage be used on fishing boats, rescue vessels and tugboats.

Features and benefits

- Applicable to sub-zero temperatures of -50°C (-58°F)
- Top mirrored E40 halogen lamp

Options

- Pedestal
- Canvas cover
- Anti-condensation heater in drum.
- Control panel: See TEF 2610



Technical Data

Material barrel:	Stainless steel
Material back plate:	Stainless steel
Material mounting:	Crutch - Stainless steel
Material base:	Stainless steel
Material lens:	Toughened soda-lime glass
Material mirror:	Silver plated glass reflector
Finish:	All white surface powder coated (RAL 9010 to 70-80uM.
Ingress protection:	IP56 (DIN40050)
Weight searchlight:	36 kg.
Weight pedestal:	4,8 kg / 10,2 kg.
Weight manoeuvre bar:	Short: 1,7 kg. Long: 3,4 kg.

TRANBERG STAHL

THE STRONGEST LINK.

R. STAHL TRANBERG AS

Main office | Strandsvingen 6 | N-4032 Stavanger, Norway | T +47 51 57 89 00 | E info.no-st@r-stahl.com | stahl-tranberg.com
Oslo office | Luhrtoppen 2 | N-1470 Lørenskog, Norway | T +47 24 08 44 10 | E info.no-os@r-stahl.com | stahl-tranberg.com

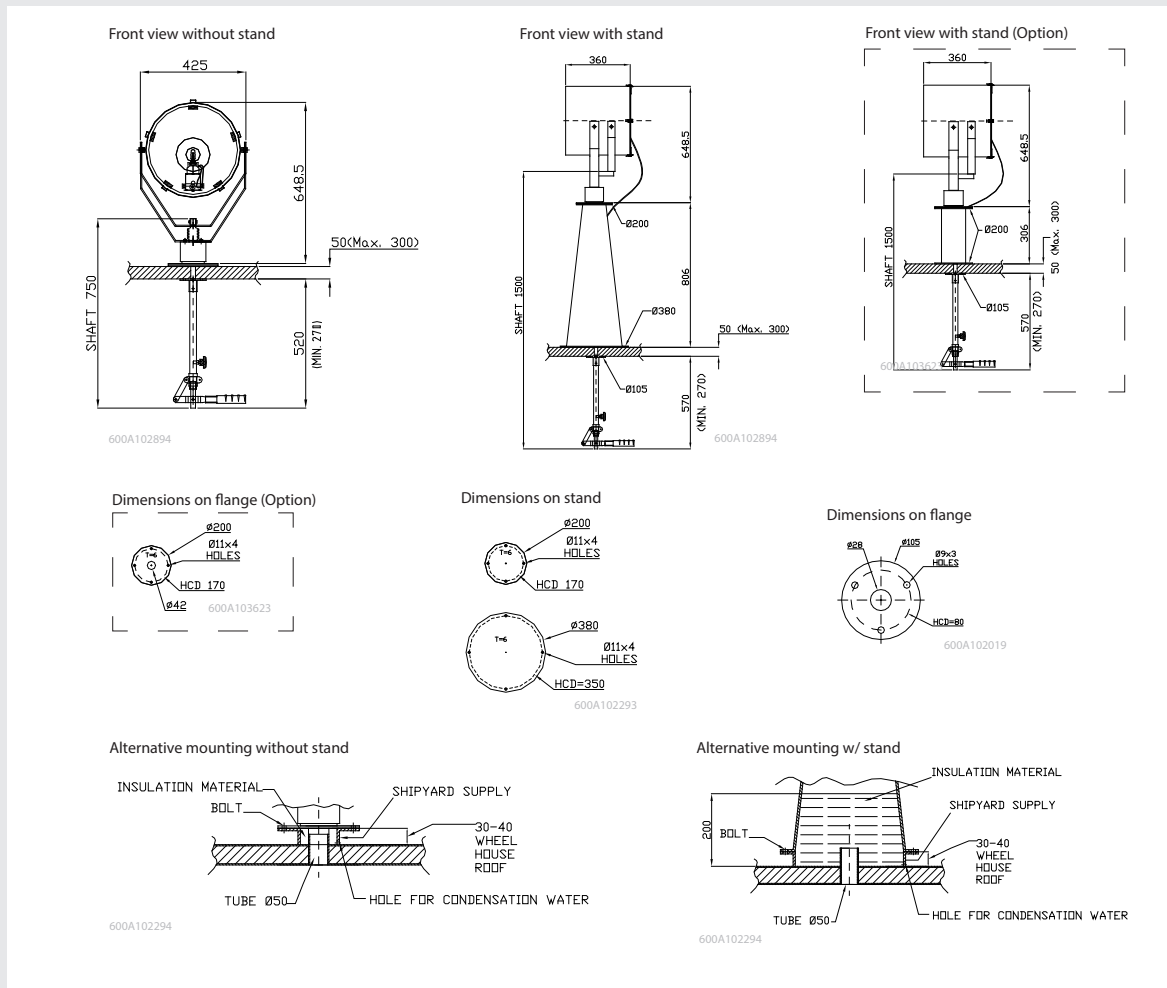
TRANBERG® SEARCHLIGHT

TEF 2630 Searchlight Commander Halogen 250W Bridge Operated
Safe Area

Description									Part No.
Mirror Size	Watt	Volt	Peak Beam Candela Power	Range M 1 lux at target	Divergence	Pan°	Pedestal	Tilt°	
305 mm (12")	250	230	2,1 x 10 ⁶	1320	6°	370	N/A	+15 -35	2630218210
Halogen	250	230	2,1 x 10 ⁶	1320	6°	370	300mm	+15 -35	2630218213
	250	230	2,1 x 10 ⁶	1320	6°	370	800mm	+15 -35	2630218218

Optical Performance: All data shown above is theoretical and calculated to IES Formulae

Dimensions



R. STAHL TRANBERG AS

Main office | Strandsvingen 6 | N-4032 Stavanger, Norway | T +47 51 57 89 00 | E info.no-st@r-stahl.com | stahl-tranberg.com

Oslo office | Luhrtoppen 2 | N-1470 Lørenskog, Norway | T +47 24 08 44 10 | E info.no-os@r-stahl.com | stahl-tranberg.com