

# TRANBERG® HV ENCLOSURE

TEF 1061 Ex eb High Voltage With Copper Bar Solutions

Zone 1, Zone 2 & Safe Area



The High Voltage solution with copper bus-bars combined with the use of Ex-certified Isolators, is our latest news for High Voltage executions.

This system is called type RHG, named for the 3 different types of bus-bar solutions.

- Type-R is with a rectangular bus-bar.
- Type-H is with a H-profile bus-bar.
- Type-G is with a G-profile bus-bar.

This R and G-type system is developed and standardized up to 11kV, and is certified by notified body according to ATEX and IECEx.

## Features and benefits

### R - Profile:

- Designed for 1 cable in and 1 cable out for each phase
- A cost effective solution
- Designed for 300mm<sup>2</sup>
- Available with certified cable cleats

### H - Profile:

- Designed for multiple cables in and out on each phase
- Designed for max. 300mm<sup>2</sup>
- Available with cleats

### G - Profile:

- Compact solution
- Ex-Certified isolators
- Designed for up to 4 cables each phase
- Designed for 300mm<sup>2</sup>
- To withstand Short-circuit up to 50kA
- Max current load 960A

### Options:

- Door stopper
- Customized solution on request
- MCT-G frame
- Tranberg enclosure heater
- Can be delivered with cam locks or screws in lid
- Can be delivered with tinned CU-bars



## Technical Data

Marking:	Ex II 2 G Ex eb IIC T4, T5, T6
Material:	Stainless steel AISI 316L / EN 1.4404
Finish:	Bright chemical dip
Ingress protection:	IP66
Earthing on JB:	Through studs on enclosure and MCT frame
Earthing cable:	Copper bar mounted on spacers
Ambient temperature:	-20° to +40°C - Extended temperatures upon request.
Cable entries:	Tranberg EX cable glands as standard. Only appropriate ATEX/IECEx certified glands, blanks and adaptors must be used.
General:	Standardized for bottom side entries. Suitable for DC solutions. Suitable for 400V up to 11kV.
Approval and Certificates:	IECEx PRE 14.0001 Presafe 14ATEX4124 Enclosure solutions with optional technical specifications upon request. These solutions are subject to unit verification certifications or field certifications. Complies with: EN 60079-0:2012 EN 60079-7:2007 IEC 60079-0:2011 IEC 60079-7:2011

TRANBERG STAHL

THE STRONGEST LINK.

## R. STAHL TRANBERG AS

Main office | Strandsvingen 6 | N-4032 Stavanger, Norway | T +47 51 57 89 00 | E info.no-st@r-stahl.com | stahl-tranberg.com  
Oslo office | Lührtoppen 2 | N-1470 Lørenskog, Norway | T +47 24 08 44 10 | E info.no-os@r-stahl.com | stahl-tranberg.com

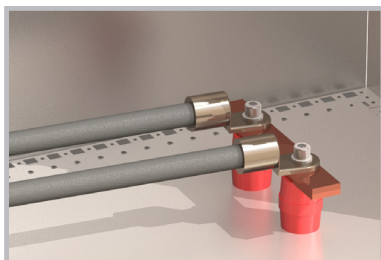
# TRANBERG® HV ENCLOSURE

TEF 1061 Ex eb High Voltage with Copper Bar Solutions

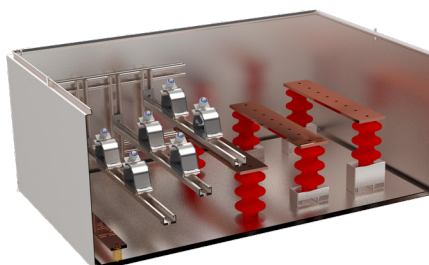
Zone 1, Zone 2 & Safe Area

Description	Dimensions	Part No.
<b>Type R - Solution (Rectangular CU Bus-Bars)</b>		
Enclosure TEF 1061, HV-R, 3.5kV-3ph 490A	W800xH900xD300mm	1063470
Enclosure TEF 1061, HV-R, 6.9kV-3ph 490A	W800xH1000xD350mm	1063471
Enclosure TEF 1061, HV-R, 11kV-3ph 490A	W900xH900xD400mm	1063472
<b>Type H - Solution (H-profile CU Bus-Bars)</b>		
Enclosure TEF 1061, HV-H, 11kV-3ph 900A	W800xH1200xD500mm	1063480
Enclosure TEF 1061, HV-H, 11kV-3ph 900A	W1000xH1200xD500mm	1063481
Enclosure TEF 1061, HV-H, 6.9kV-3ph 900A	W750xH1100xD450mm	1063482
Enclosure TEF 1061, HV-H, 3.5kV-3ph 900A	W1000xH1200xD350mm	1063483
Enclosure TEF 1061, HV-H, 6.9kV-3ph 900A	W900xH1200xD450mm	1063485
Enclosure TEF 1061, HV-H, 3.5kV-3ph 900A	W700xH1100xD350mm	1063504
<b>Type G - Solution (G-profile CU Bus-Bars)</b>		
Enclosure TEF 1061, HV-G, 11kV-3ph	W800xH1000xD450mm	1063490
Enclosure TEF 1061, HV-G, 6.9kV-3ph 900A	W800xH1000xD450mm	1063491
Enclosure TEF 1061, HV-G, 3.5kV-3ph 900A	W600xH900xD400mm	1063492
Enclosure TEF 1061, HV-G, 11kV-3ph 300A	W700xH1000xD450mm	1063493
Enclosure TEF 1061, HV-G, 6.9kV-3ph 300A	W600xH850xD400mm	1063494
Enclosure TEF 1061, HV-G, 3.3kV-3ph 300A	W500xH850xD400mm	1063495
Enclosure TEF 1061, HV-G, 6.9kV-3ph 700A	W600xH850xD400mm	1063500
Enclosure TEF 1061, HV-G, 3.3kV-3ph 700A	W500xH850xD350mm	1063501
Enclosure TEF 1061, HV-G, 11kV-3ph 700A	W700xH1000xD450mm	1063502
<b>Custom</b>		
Enclosure TEF 1061, HV, Hinged Lid w/ Screws - Customized		1063200
Enclosure TEF 1061, HV, Hinged Lid w/ Cam-Lock - Customized		1063210
Enclosure TEF 1061, HV, Unhinged Lid w/ Screws - Customized		1063300

Section View of Type-R Solution



Section View of Type-H Solution



Section View of Type-G Solution

