

TRANBERG® BlueLine LED Luminaire

TEF 2785 LED

For Area Lighting on Vessels



TRANBERG® BlueLine Lighting Series represents the highest standards in quality, cost-effective marine lighting for today's modern ships and delivers reduced CAPEX/OPEX through easy installation and no maintenance.

The TRANBERG® BlueLine Series has been designed to provide marine operators with a world quality standard in marine lighting.

Application

- Area lighting for ships such as lighting of walkways, car-decks, engine rooms, cargo areas etc.

Features and benefits

- Compact dimensions.
- Predicted 50 000 working hours.
- Easy installation - The QPD plugs from Phoenix Contact allows for a faster and more secure cable installation.
- Fastened with M8 bolts.

Options

- Contact R. STAHL TRANBERG for other combinations or features.



Technical Data

Material:	Anodized seawater resistant aluminium, stainless steel and glass / silicone	
Ingress protection:	IP 66/67	
Weight:	1,5 kg	
Mounting:	4x M6	
Cable entries:	Phoenix QPD quick installation plugs for cable up to 2,5mm ² , cable gland, possibility for through wiring	
Operating temperature:	-30° to +45°C	
Working hours:	Predicted 50 000 h	
Light source:	COB-LED, Color LED	
Light distribution:	Wide with glass top, ultra wide and asymmetric with optics.	
Light color & output:	2200k - 1500lm	Blue - 450lm
	4000k - 1900lm	Red - 360lm
	5000k - 2000lm	Green - 780lm
CRI:	>80	
Power supply:	100-240 V AC / 24V DC	
Power consumption:	Max. 15W	
Power effectivity:	>120 lm/W	

TRANBERG **STAHL**

THE STRONGEST LINK.

R. STAHL TRANBERG AS

Main office | Strandsvingen 6 | N-4032 Stavanger, Norway | T +47 51 57 89 00 | E info.no-st@r-stahl.com | stahl-tranberg.com

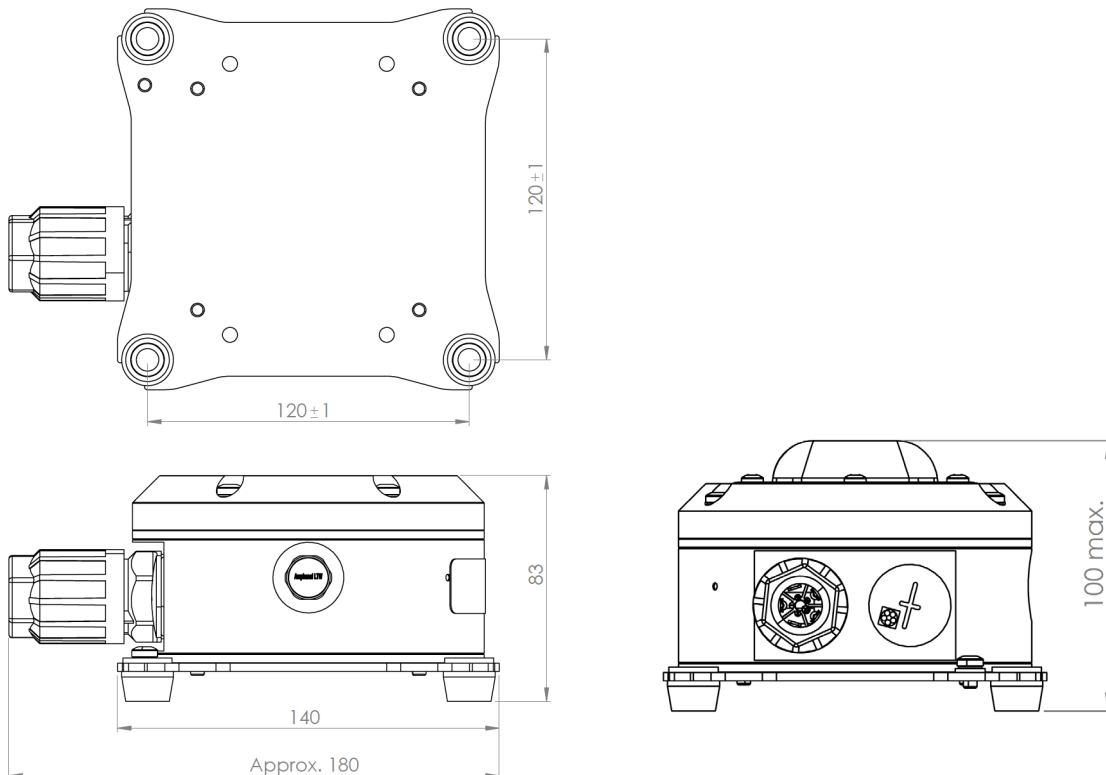
TRANBERG® BlueLine LED Luminaire

TEF 2785 LED

For Area Lighting on Vessels

Description	Wide	Ultra Wide	Asymmetric
TRANBERG® BlueLine LED Luminaire 15W, 100-240V, 2200K	27851210	27851216	27851217
TRANBERG® BlueLine LED Luminaire 15W, 100-240V, 4000K	27851410	27851416	27851417
TRANBERG® BlueLine LED Luminaire 15W, 100-240V, 5000K	27851510	27851516	27851517
TRANBERG® BlueLine LED Luminaire 15W, 100-240V, Blue	27851610	27851616	27851617
TRANBERG® BlueLine LED Luminaire 15W, 100-240V, Red	27851710	27851716	27851717
TRANBERG® BlueLine LED Luminaire 15W, 100-240V, Green	27851810	Upon Request	Upon Request
TRANBERG® BlueLine LED Luminaire 15W, 24V, 2200K	27852210	27852216	27852217
TRANBERG® BlueLine LED Luminaire 15W, 24V, 4000K	27852410	27852416	27852417
TRANBERG® BlueLine LED Luminaire 15W, 24V, 5000K	27852510	27852516	27852517
TRANBERG® BlueLine LED Luminaire 15W, 24V, Blue	27852610		
TRANBERG® BlueLine LED Luminaire 15W, 24V, Red	27852710		
TRANBERG® BlueLine LED Luminaire 15W, 24V, Green	27852810		

Dimensions



R. STAHL TRANBERG AS

Main office | Strandsvingen 6 | N-4032 Stavanger, Norway | T +47 51 57 89 00 | E info.no-st@r-stahl.com | stahl-tranberg.com

TRANBERG

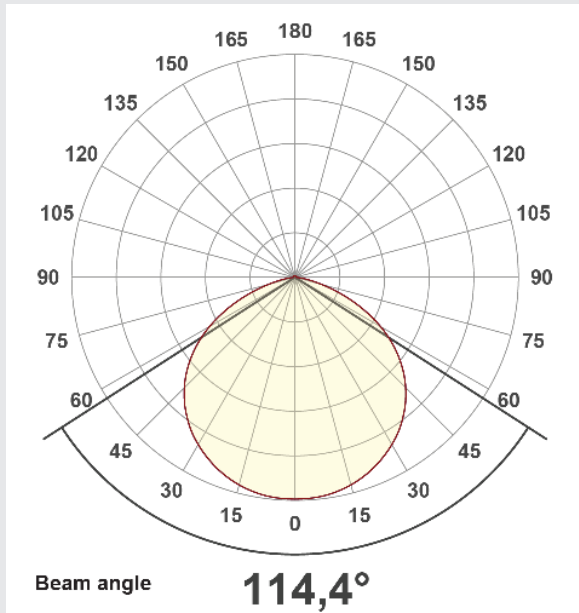
TRANBERG® BlueLine LED Luminaire

TEF 2785 LED

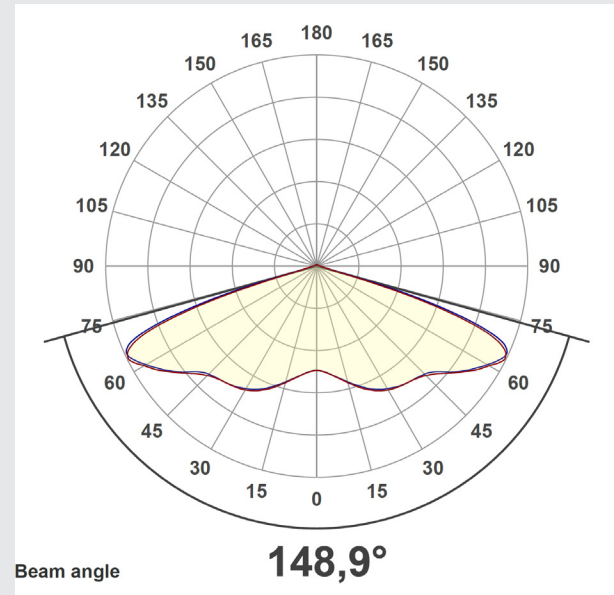
For Area Lighting on Vessels

Typical Light Distribution

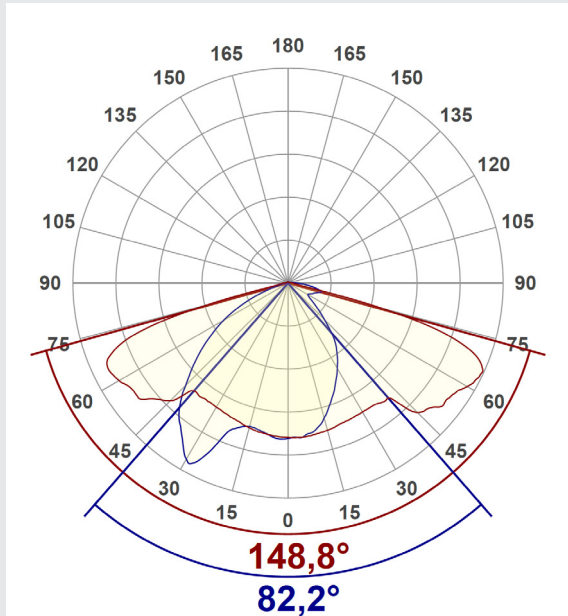
Wide



Ultra Wide



Asymmetric



R. STAHL TRANBERG AS

Main office | Strandsvingen 6 | N-4032 Stavanger, Norway | T +47 51 57 89 00 | E info.no-st@r-stahl.com | stahl-tranberg.com

TRANBERG