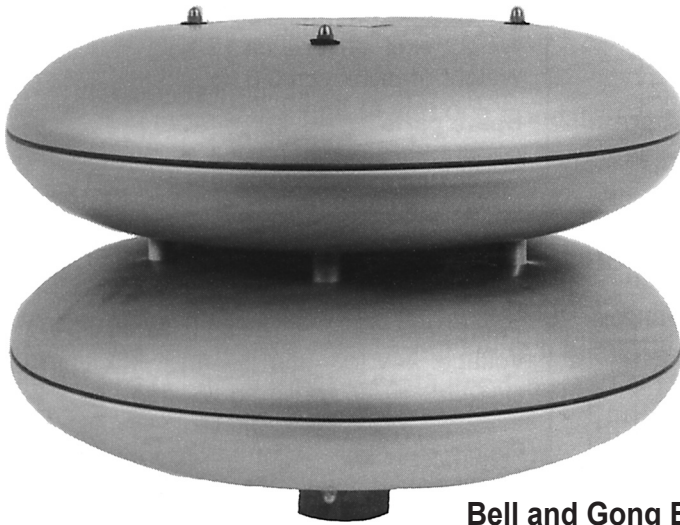


# Bell and Gong type B & G 500

Electronic Bell and Gong for use aboard vessels at anchor in restricted visibility



**Bell and Gong B & G 500**  
Ref. no. 24530062



**Electronic Timer TI 65**  
Ref. no. 24530190

## General Information

According to the International Regulations for Preventing Collisions at Sea 1972, Rule 33, vessels of 12m in length or more shall be equipped with a bell, and vessels of 100m or more shall, in addition, be provided with a gong with the tone and sound which cannot be confused with that of the bell. The device shall produce a sound pressure level of not less than 110 dB at 1 metre. The electronic B & G 500 system is especially developed to meet these regulations.

The Bell and Gong sound emitters are identical, electrodynamic and omnidirectional. They are, also, small and compact compared with many other loudspeaker constructions. The construction is advantageous from different aspects — not only the aesthetic.

By means of modern electronics, a Power Amplifier BG 200 supplies the sound emitters with various signal characters. To emit the prescribed signal characters, the Bell and Gong units are controlled by an Electronic Timer TI 65 designed for panel mounting. The timer has an operating switch and three indicating LED lights.

## Power Amplifier BG 200

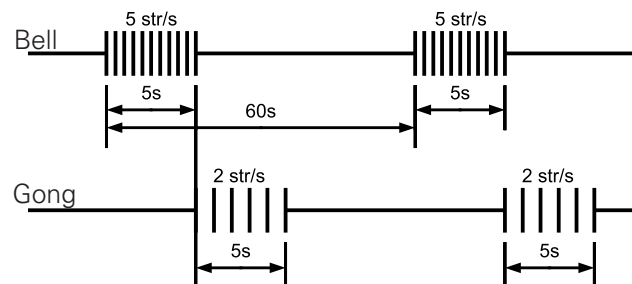
The Power Amplifier BG 200 consists of a mounting plate with a DC/DC unit and an amplifier. It only requires 24V DC 10A.

The Power Amplifier BG 200 is to be mounted under a panel, or similar, and protected against water. When signalling, the unit will be warm and will, therefore, require good air circulation.

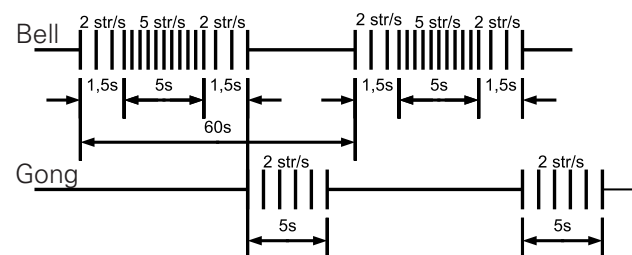
## Electronic Timer TI 65

The Electronic Timer TI 65 is in principle a converter by means of which the direct current from a battery or DC generator is treated by a microprocessor to an alternating current of a frequency and wave form suitable to feed the horn. A quartz crystal keeps the frequency superstable, and the digital oscillator followed by the Power Amplifier BG 200 gives an extremely high efficiency and reliability in the conversion process.

Repeating signal characters for ship at anchor



Repeating signal characters for ship aground



# Spare Parts, Dimensions and Wiring Diagram

## Bell and Gong B & G 500

### Technical Data

Ref. no. 24530062

Sound modules are made of anodized aluminium with distance pins of stainless steel.

Must fitting for a 2" supporting pipe of galvanized steel.

All cables placed in the distance pins and drawn to a connector in the lower module.

Sound pressure level (min.): 110 dB at 1 m

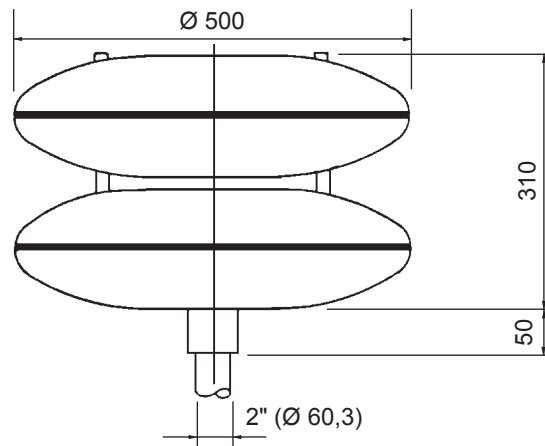
Temperature range: -30°C to + 60°C

Weight excl. drivers: ca 17 kg

Weight of driver: ca 3,5 kg

### Spare Parts

Driver, ref. no 20620022



## Power Amplifier BG 200

### Technical Data

Ref. no. 25530040

Outer dimensions: 485 x 275 x 90 (L x H x D)

Power consumption: max. 240W

Voltage: 24V DC (min. 20, max. 30)

Options: 230 AC 50/60 Hz, 230V DC

115V AC 50/60 Hz, 115V DC, 12V DC

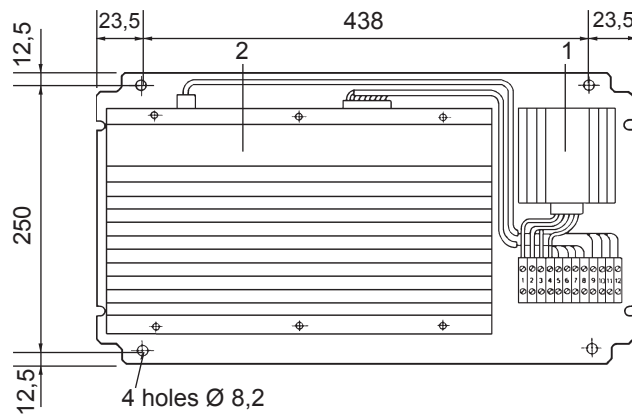
Please state voltage when ordering.

### Spare Parts

1 DC/DC 24/12, ref. no: 20142034

2 Amplifier

Fuse 5 x 20 10AS



## Electronic Timer TI 65

### Technical Data

Ref. no. 24530190

Voltage: 12V DC (supplied from BG 200)

### Operation

1 green LED shows ON position

2 orange LED:s show Bell and Gong signals.

Built-in software, can be modified for other signal characters.

### Spare Parts

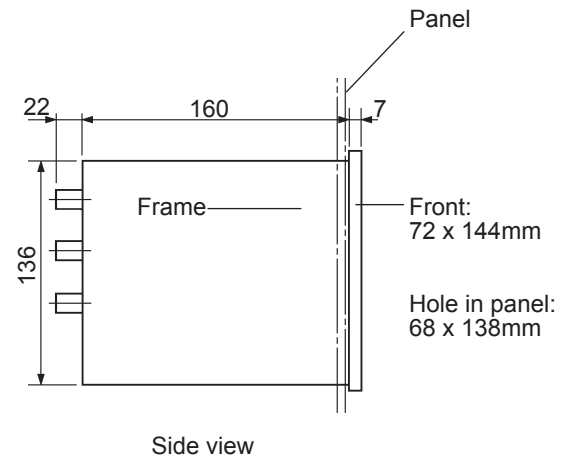
Fuse: 5 x 20 500mAF

Microprocessor: P73029

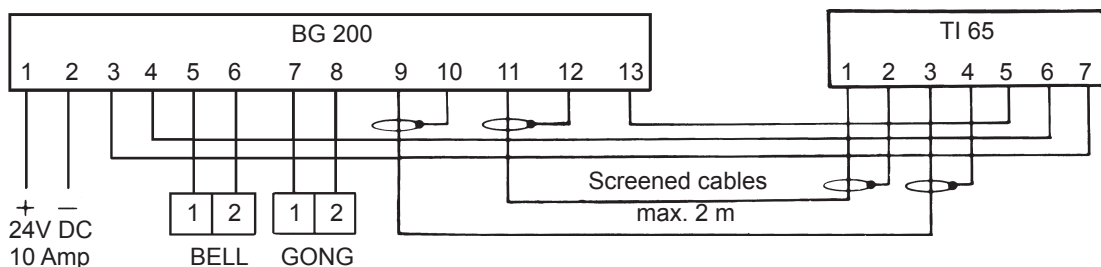
Prom: P73030

Switch

Knob



## Wiring Diagram



Spare Parts can be obtained from Kockum Sonics or their agents. When ordering, please, give reference number and part name.

Subject to alteration without notice.