



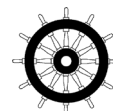
NAVIGATION LIGHTS

TEF 2898 NAVIGATION LIGHT

SAFE AREA

USER MANUAL

Subject to change without prior notice TUM1003 REV. I 03.08.2018



IMPORTANT

Read this instruction carefully before installing the product

COPYRIGHT

©Tranberg AS

The information contained in this document remains the sole property of Tranberg AS. No part of this document may be copied or reproduced in any form or by any means, and the information contained within it is not to be communicated to a third party, without the prior written consent of Tranberg AS. The document, or any part of it, may not be translated to any other language without the written approval from Tranberg AS.

DISCLAIMER

Tranberg AS endeavors to ensure that all information in this document is correct and fairly stated, but does not accept liability for any errors or omissions.

SAFETY PRECAUTIONS

Note that changes made to the product and/or installation of components which do not conform to the manufacturer's specification, may be a safety violation. The manufacturer will in no circumstance be held responsible for such activity. For your health and safety, always use safety gear suited for the task. Be certain to follow codes, regulations and/or specific procedures that are related to the installation.



R. Stahl Tranberg AS

E info@stahl-tranberg.com | stahl-tranberg.com

Main office: Strandsvingen 6 | N-4032 Stavanger | Norway | T +47 51 57 89 00 | F +47 51 57 89 50

Office Oslo: Lohrtoppen 2 | N-1470 Lørenskog | Norway | T +47 24 08 44 10

INTRODUCTION

Thank you for purchasing this product!
For installation, maintenance and assurance of a long life of this product, please follow this manual.

CONTENT IN BOX

The product is fully assembled, and ready for installation.

SAFETY PRECAUTIONS

Note that changes made to the product and/or installation of components which do not conform to the approval, may be a safety violation. The manufacturer will in no circumstance be held responsible for such activity.
For your health and safety, always use safety gear suited for the task. Be certain to follow codes, regulations and/or specific procedures that are related to the installation.

MAINTENANCE INSTRUCTIONS

The lantern should be inspected according to Company routines. The manufacturer suggests regular check for water intrusion/condensation which should be removed immediately. Check the drain plug / drain hole function.
When cleaning, use only mild detergents. Alcohol or petroleum based products may damage lens, paint or plastic components.

TOOLS REQUIRED

Regular tools required for installation.

One small, flat screwdriver for the electrical connections.

One small adjustable wrench for the electrical compartment cover.

One larger adjustable wrench or an adjustable torque wrench for the fixing screws for the lantern to wall / mast, and if using Tranberg stainless steel mounting bracket, between this and the mast and the lantern.

IMPORTANT INFORMATION

Some models are supplied with galvanic isolators. These should be placed between the lantern and the wall, thus preventing corrosion to either. There should be used acid resistant stainless steel fixing screws/bolts.
Never paint lantern or any of its components.
Use only spare parts as described.

If all round lanterns are mounted upside-down, the M3 screw and washer on top of the lantern must be removed and inserted to the drain hole at the bottom of the lantern which now will be the top of the lantern. See figure below.



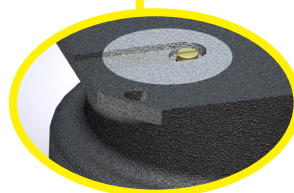
The lantern arrive from Tranberg AS with the M3 screw and washer mounted on the lantern lid.



If the lantern will be mounted upside-down, remove the M3 screw and washer from the lantern lid.



Insert the screw and washer into the drain hole at the bottom of the lantern which is now the top of the lantern.



INSTALLATION INSTRUCTIONS

The lantern should be installed according to IMO regulations and other relevant rules and regulations for electrical installations onboard ships.

Consider the difference in material between the lantern (seawater resistant aluminium or brass) and the wall/mast it is to be installed on. Use galvanic isolators whenever there is a risk of corrosion.

Important!

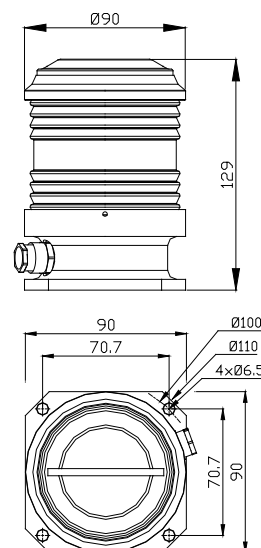
The fixing screws or bolts must be tightened firmly, but excessive force will damage the lantern. It is recommended to use acid resistant stainless steel screws/bolts.

Important!

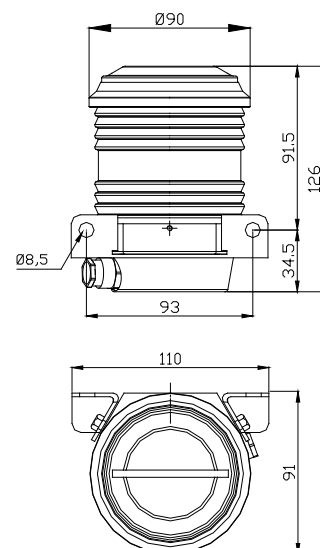
If Tranberg stainless steel mounting bracket is used for mounting the all round lantern, the fixing hoop nuts must be tightened firmly (illustrated with max. 2,5 kg/m with an adjustable torque wrench), but excessive force will bend the bracket, and bolt the bracket and the fixing threads in the lantern will be damaged.

The power cable should enter the lantern in such a manner that the cable gland correctly forms a tight entrance. The cable must be clamped near up to the lantern according to relevant rules and regulations for electrical installations onboard ships

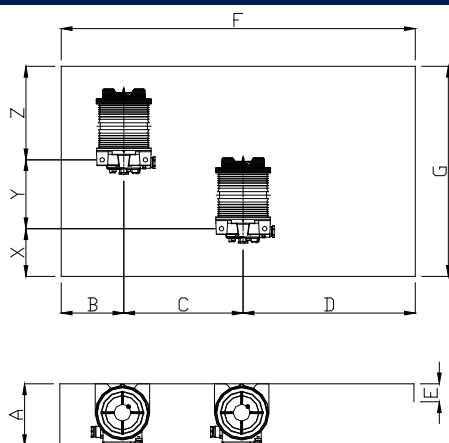
All round lantern



Navigation lantern



SCREENING DATA FOR LANTERNS



280A105557

NOTE:

All measurements in millimeters

All tolerances +/-1mm

Minimum measurements indicated by an asterisk (*)

Formula:

Lantern	A	B	C*	D	E	F*	G*	X*	Y*	Z*
TEF 2840	<B*2	>=150	125	>=C*2	62-(0,026*D)	600	445	55	190	200
TEF 2850	<B*2	>=250	225	>=C*2	95-(0,026*D)	900	590	55	260	275
TEF 2870	<B*2	>=200	175	>=C*2	67-(0,026*D)	700	465	55	200	210
TEF 2898	<B*2	>=150	125	>=C*2	45-(0,026*D)	600	325	55	130	140

Recommended practical measurements:

Lantern	A	B	C*	D	E	F*	G*	X*	Y*	Z*
TEF 2840	300	150	125	250	55	600	445	55	190	200
TEF 2850	500	250	225	450	84	900	590	55	260	275
TEF 2870	400	200	175	350	58	700	465	55	200	210
TEF 2898	300	150	125	250	39	600	325	55	130	140

SPARE PART LIST

Description	Weight	Part No.
Mounting bracket	0,35 kg.	3264
Lens, clear		5048 0019
Lens, green		5048 1011
Lens, red		5048 2011
Lens, yellow		5048 3009
Lamp holder with fixing bracket BAY 15d	0,014 kg.	3298
Light source 12V-10W	0,02 kg.	9400 053
Light source 20V-10W	0,02 kg.	9400 051
Light source 12V-25W	0,02 kg.	9400 054
Light source 24V-25W	0,02 kg.	9400 050

NOTE:

Lantern lamps for vessels 7-12m: 10W, 12V/24V -
 (for AR/AG: 25W, 12V/24V) - for vessels 12-20m:
 25W, 12V/24V
 Not cd-marked lantern lamp.

TECHNICAL DATA

Material:	Anodized seawater resistant aluminium Lens of through-coloured glass
Input voltage:	Max.12V AC/DC, 24V AC/DC
Light source:	10 Watt for vessels 7 - 12 meter (AR/AG: 25Watt) 25 Watt for vessels 12 - 20 meter Light source according to DIN 49841
Lamp holder:	BAY 15d
Power consumption:	10-25 Watt, dependant on light source
Minimum visibility:	10W : 2 n. m. with clear lens / 1 n.m. with coloured lens 25W : 3 n. m. with clear lens / 2 n. m. with coloured lens
Weight:	Navigation lantern: 0,74 kg. / All round lantern: 0,84 kg.
Ingress protection:	IP56
Standard cable entries:	M20 for cable diam.: 4,5 - 10mm