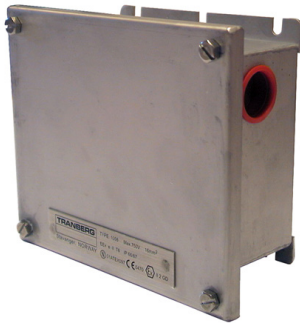




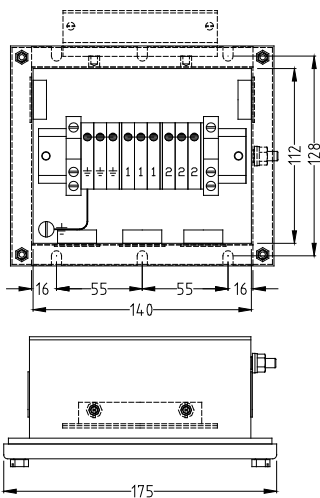
JUNCTION BOX TYPE 1054 FOR HEAT TRACE PIPE & WALL MOUNTED **SAFE AREA** USER MANUAL

Subject to change without prior notice TUM1026 REV. A 17.07.2017

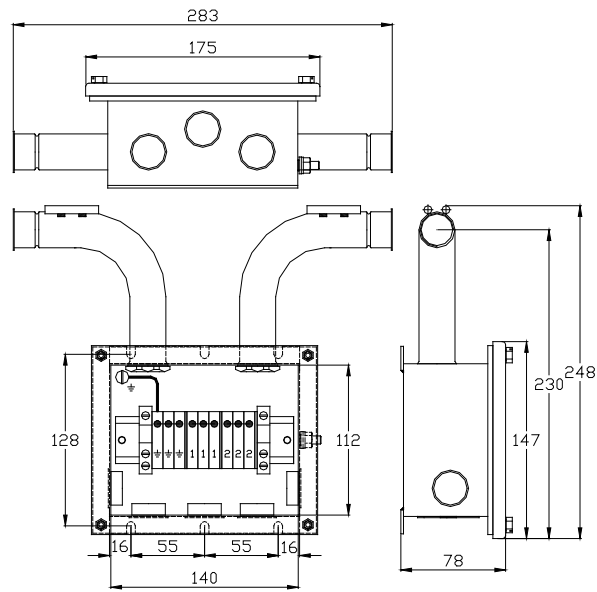


IMPORTANT

Read this instruction carefully before installing the product



772A10589



772A10588



R. Stahl Tranberg AS

E info@stahl-tranberg.com | stahl-tranberg.com

Main office: Strandsvingen 6 | N-4032 Stavanger | Norway | T +47 51 57 89 00 | F +47 51 57 89 50

Office Oslo: Luhrtoppen 2 | N-1470 Lørenskog | Norway | T +47 24 08 44 10

TEF 1054 HEAT TRACE JUNCTION BOX - PIPE AND WALL MOUNTED

INTRODUCTION

Thank you for purchasing this product!
For installation, maintenance and assurance of a long life of this product, please follow this manual.

MAINTENANCE / REPAIR / MODIFICATION

Maintenance according to national regulations and company practice.

Before opening the junction box make sure that the power is disconnected.

Servicing the junction box is done by checking the intactness of the junction box, gasket and glands. If necessary lubricate the lid bolt threads with grease type Renolit Unitemp 2 from Fuchs.

If repair or overhaul is necessary, only Tranberg spare parts must be used.

Modification of the JB or change of design are not permitted, except for installing additional glands according to the approval of the JB.

APPROVALS

NA

INSTALLATION

Only qualified personnel are allowed to perform installation and maintenance tasks to this equipment.

The junction box is equipped for termination of heat tracing and is ready for installation when leaving the production facilities of Tranberg AS. Changes made to the product which do not confirm to the approvals of this equipment, is a safety violation. The manufacturer is under no circumstances responsible for personal injuries, death or any other damage caused by such activities. Any damage done to the equipment during transportation is not the responsibility of Tranberg AS. If the content is not complete, file a claim to the producer immediately.

Assembly of wall mounted type fig 01

1. Mount the Junction Box, by at least 2 pcs M6 bolts placed diagonally, on a wall or on proper supported rack.
2. Remove dust protection or stopping plug and install required glands. Entry holes not in use must be blinded with stopping plugs. Only certified cable entries and blinds must be used. Glands must be chosen according to cable diameter used.
3. Strap the transition unit to pipe with pipe-strap
4. Assembly the flexible conduit according to fig 03.

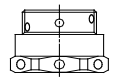
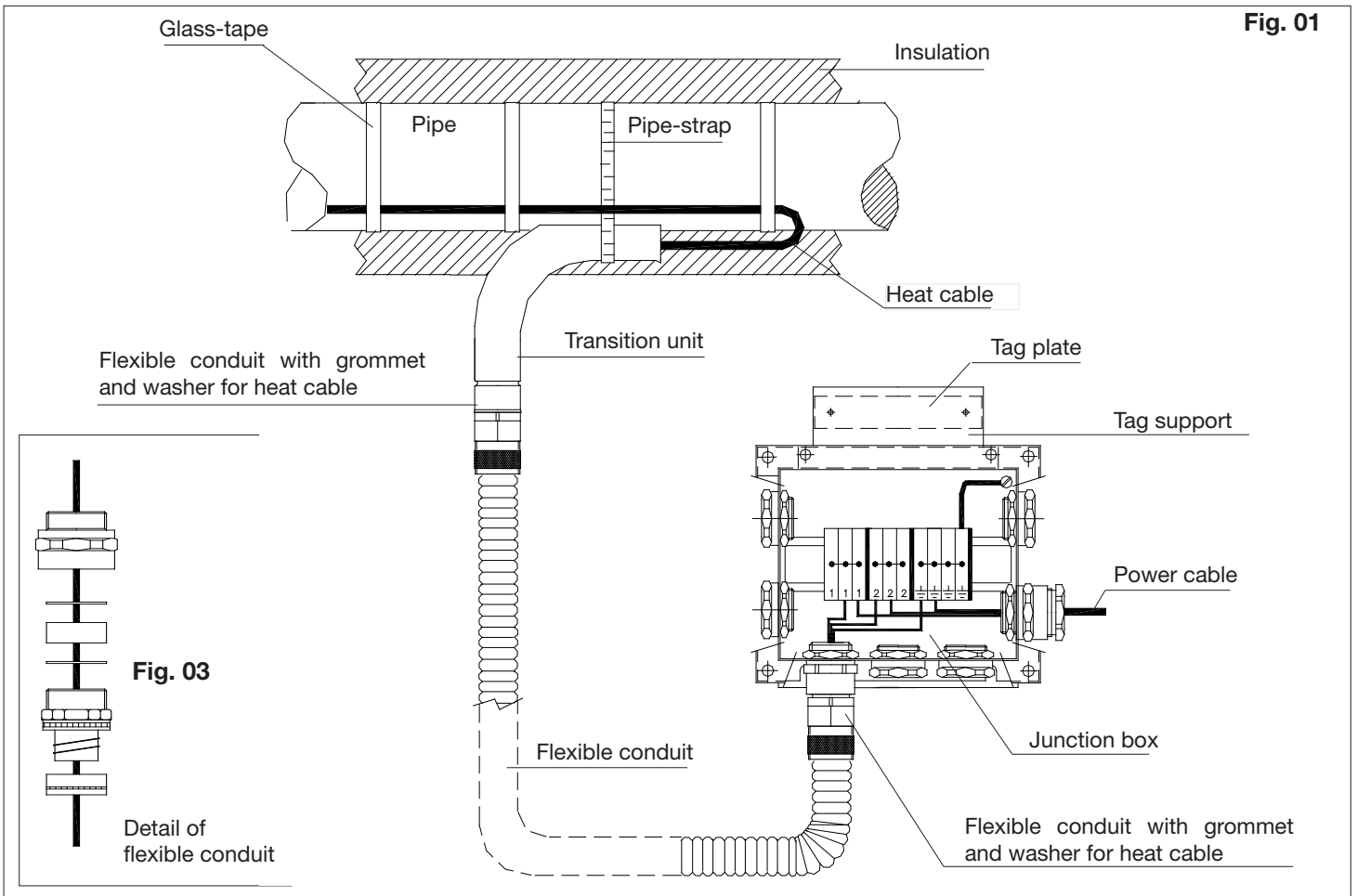
Assembly of pipe mounted type fig 02

1. Mount Junction Box either standing or hanging to pipe by pipe-strap.
2. Remove dust protection or stopping plug and install required glands. If required, drain should be inserted at the lowest point. Entry holes not in use must be blinded with stopping plugs. Only certified cable entries and blinds must be used. Glands must be chosen according to cable diameter used.

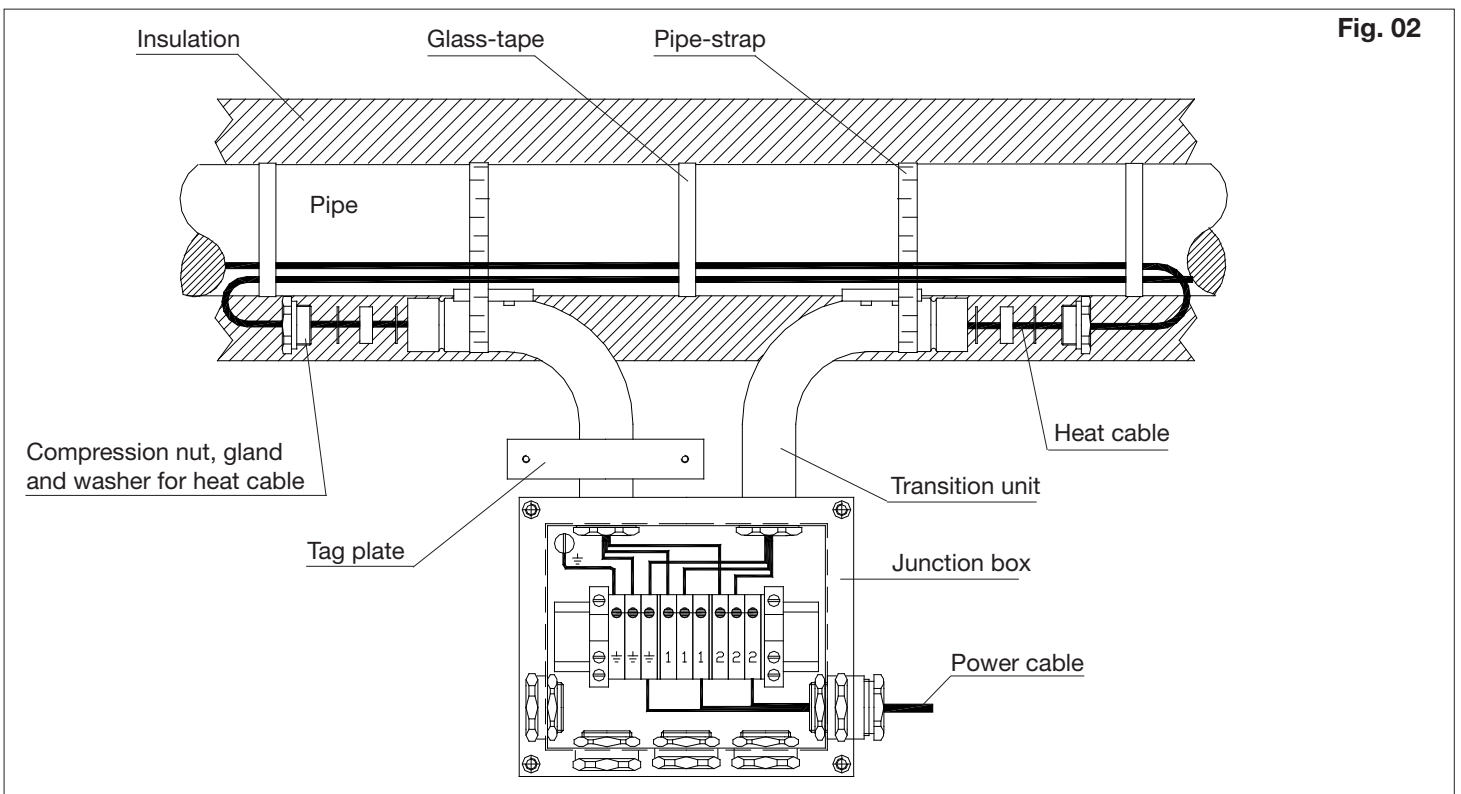
Termination

In order to maintain the mode of protection, the conductors will have to be connected with special care. The insulation must reach up to the terminal and the conductor must not be damaged. Termination of heat cable must be according to cable specification given by supplier of these. All screw on the terminals, also those remaining vacant, must be tightened down. Reinstall lid and tighten bolts firmly with suitable tool by hand force. Over-tightening may impair the protection category.

TEF 1054 HEAT TRACE JUNCTION BOX - PIPE AND WALL MOUNTED



Drainplug to be mounted at the lowest point



TEF 1054 HEAT TRACE JUNCTION BOX - PIPE AND WALL MOUNTED

TECHNICAL DATA

Housing:	Acid proof stainless steel
Max voltage:	Max 750V AC/DC
IP-rating:	IP66/67
Tamb:	STD config. Min. -25°C to max +40°C Arctic config. Min. -50°C to max +90°C NOTE: Temperature for Arctic config. may be different temperatures between -25°C and -50°C, dependant on min. temperature for component inside junction box. Normaly as Arctic std. the min. temp is -50°C
Max terminals:	6 mm ²
Area for use:	Safe area
Marked:	CE marked



R. Stahl Tranberg AS

E info@stahl-tranberg.com | stahl-tranberg.com

Main office: Strandsvingen 6 | N-4032 Stavanger | Norway | T +47 51 57 89 00 | F +47 51 57 89 50

Office Oslo: Luhrtoppen 2 | N-1470 Lørenskog | Norway | T +47 24 08 44 10