



Perimeter / Obstruction Light LED

TEF 2440

**Document properties (TUM1072)**

Revision	Comment	Date	By
F	Minor changes	25.01.2022	CKR
G	Minor changes	07.02.2022	CKR

# Installation and operating manual

---

## Contents

Document properties (TUM1072) .....	1
Warnings and risk levels .....	3
General information .....	3
Marking and intended use .....	4
Special conditions for safe use .....	5
Technical data .....	5
Product description .....	5
Transport and storage .....	5
Mounting and installation .....	6
Mounting .....	6
Dimensions .....	8
External dimensions: .....	8
Commissioning .....	8
Maintenance and cleaning .....	9
Disposal .....	9
Compliance/Conformity .....	10

## Warnings and risk levels

### DANGER

Non-compliance with the instruction results in risk of severe or fatal injuries to persons

### WARNING

Non-compliance with the instruction may result in risk of severe or fatal injuries to persons

### CAUTION

Non-compliance with the instruction may result in risk of injuries or damage to equipment

### NOTICE

Non-compliance with the instruction may result in reduced lifetime of equipment, malfunctions etc.

## General information

Before installation, make sure to read and understand this installation and operating manual.

Observe national assembly and installation regulations.

Always contact the manufacturer if anything is unclear, or if you notice any faults on the product or in this document.

This installation and operating manual shall be available to anyone operating, installing, inspecting, modifying or repairing the equipment.

**Marking and intended use****CAUTION**

Not intended for use in “these” conditions (Where mud may be present, on helidecks, underground, direct sunlight, heavy vibrations, high risk of impact, harsh cleaning agents, high pressure washer etc.)

CE-marking

Other markings

For use in safe area

## Special conditions for safe use

### DANGER

Special conditions for safe use are critical conditions to maintain the safety of the equipment. These shall be adhered to in all cases and under all circumstances.

- Changes made to the product and/or installation of components which do not conform to the approval, may be a safety violation. The manufacturer will in no circumstance be held responsible for such activities.
- For your health and safety, always use safety gear suited for the task. Be certain to follow codes, regulations and/or specific procedures, related to the installation.

## Technical data

Property	Value	Value
<b>Material</b>	Acid proof stainless steel, powder coated RAL 9010	Globe: Polycarbonate lexan
<b>Input voltage</b>	24 VAC/VDC, 100-230 VAC 50/60 Hz	
<b>Light output</b>	Red: > 32 Candela	Green: > 30 Candela
<b>Power consumption</b>	Max. 10W	
<b>Ingress Protection</b>	IP66 (IP67 if drainplug is replaced with blind plug)	
<b>Cable Glands perimeter light:</b>	2xM25 cable glands	
<b>Cable Glands obstruction light:</b>	1xM25 cable gland	1xM25 stopping plug
<b>For use in zone</b>	Safe Area	
<b>Height</b>	Red (obstruction light): 240 mm	Green(perimeter light): 147 mm
<b>Width</b>	140 mm	
<b>Length</b>	164 mm	
<b>Weight</b>	Red (obstruction light): 2,0 kg	Green (perimeter light): 1,9 kg

## Product description

Perimeter lights on helideck. The Luminaire consists of five powerful light emitting diodes (LEDs) mounted on a machined aluminium base. The LED driver is placed in the lamp bottom along with terminals. It has a rugged construction and is resistant to vibrations. It has a long operating life, low power consumption and gives instant light at all temperatures.

It is mounted to the surface with 4 pcs M6 bolts (bolts not supplied by manufacturer).

## Transport and storage

- Transport and store the equipment only in the original packaging
- Store the equipment in a dry and vibration free place
- Do not drop!

## Mounting and installation

### DANGER

Incorrect mounting and installation may lead to risk for falling objects, risk for electric shock or fire and risk for equipment malfunction. In turn, this can lead to severe damage and/or injuries.

### Mounting

Regular tools required for installation:

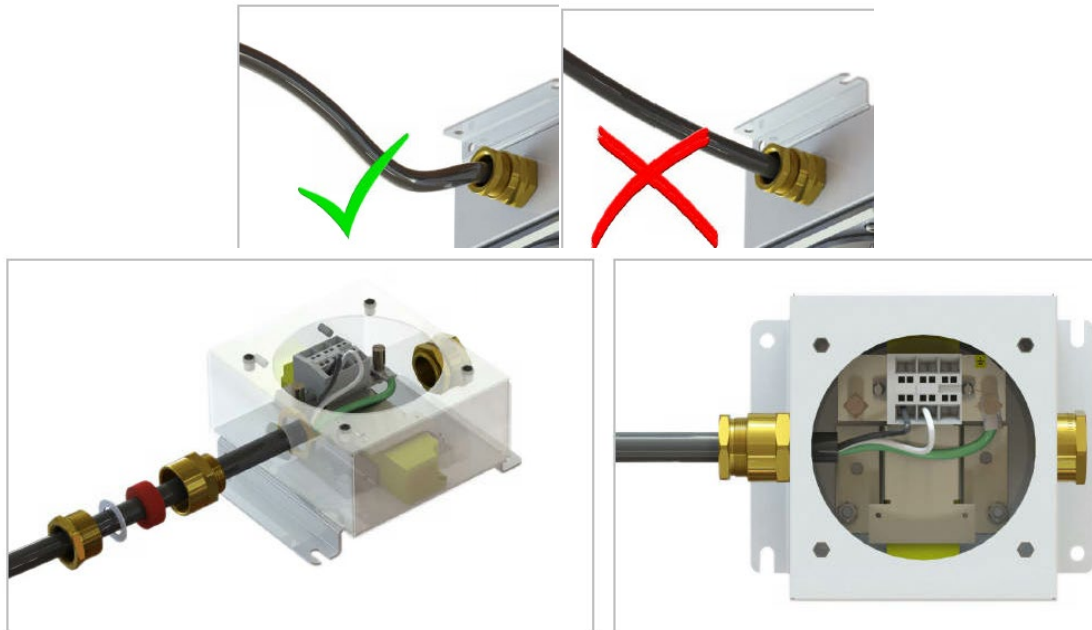
- 10 mm wrench for tightening the M6 bolts
- 32 mm wrench for tightening the cable gland.
- 30 mm wrench for tightening the lock nut.
- 25 mm wrench for tightening the pressure nut.
- PZ 2 screwdriver for tightening/loosening the globe screws.
- 3 mm flat screwdriver for tightening earth screw.

The luminaire is mounted to the surface with 4 pcs M6 bolts.

Before installing the lamp please review the following:

- Verify that the grommet kit used match the cable diameter. The included cable gland kit has two sealing rings included. One for Ø11,0-15,0 mm and one for Ø15,0-20,1 mm cable.
- Cables should have a bend downwards before entering the cable gland, which will avoid water intrusion into the luminaire. Secure the cable at a distance of maximum 50 cm from the luminaire.
- Tighten the cable gland sealing (pressure nut) according to the specification of the cable gland:
  - Tightening force for included cable gland is 8 Nm.
- If the cable gland is not in use it should be replaced by a stopping plug to prevent **water ingress**.
- Tighten the cable gland / stopping plug according to the specification for the gland/plug.
  - Tightening force for included gland/plug: 25 Nm

Cable diameter	Size sealing ring	Part no cable gland kit
11,0-15,0 mm	D2 26,8/15,0x10	6222502
15,0-20,1 mm	D1 26,8/20,3x10	6222502
Be sure to install the cable in a way which prevents any water to penetrate into the enclosure through the cable gland, also make sure to use the correct rubber seal when you install the luminaire.		



The safety wire should be in place and the two electrical wires for power to the LED's should be correctly positioned (+ and -). The input power 100-230 VAC should be terminated as indicated inside the lamp.

For the 24VAC/VDC version, connect power to the connection block.

Ensure the globe gasket is clean and properly aligned around the bottom of the globe assembly. Carefully position the globe onto the lamp body and ensure that no wires is located between the lamp body and the globe assembly. Place the globe ring over the globe and ensure the four screws enter the recessed nuts in the lamp body.

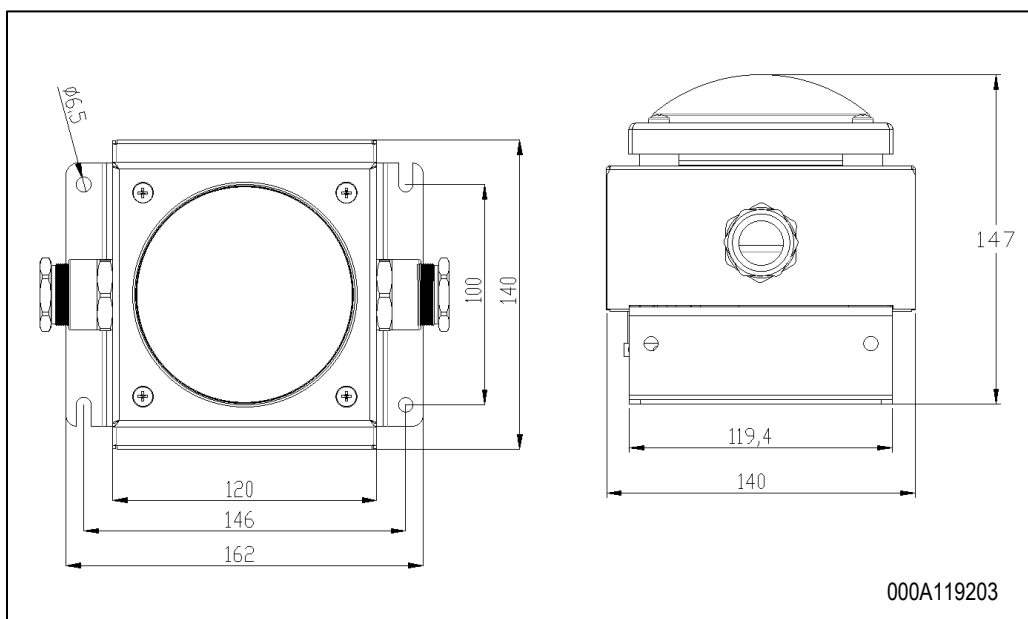
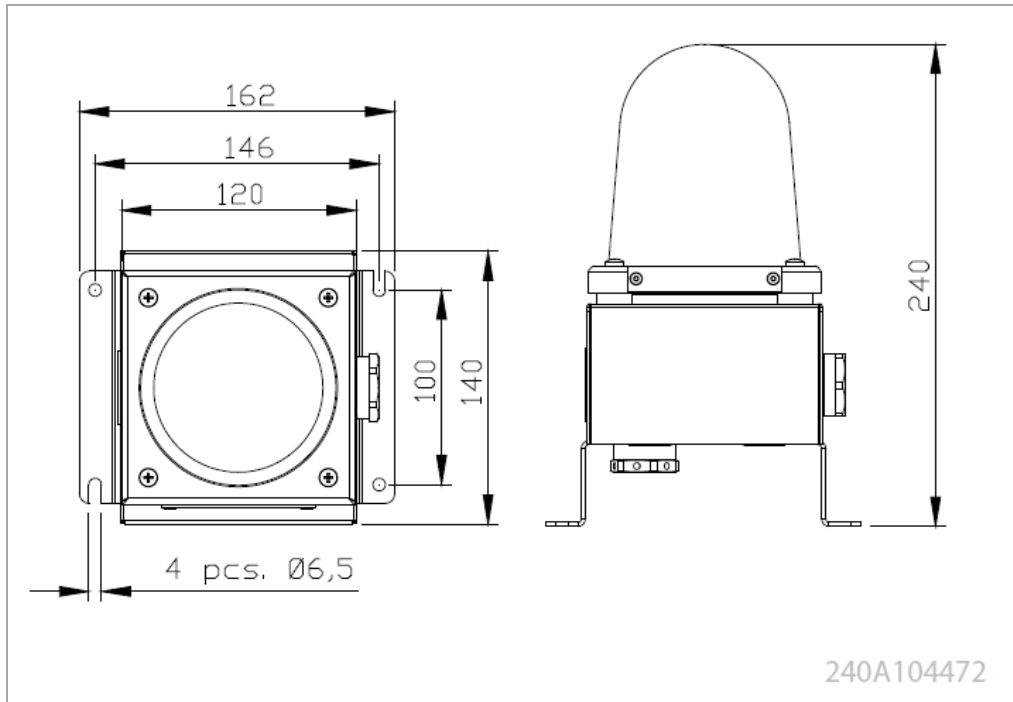
Slightly tighten the screws in a cross pattern to ensure that the globe lies straight, and the pressure on the globe gasket is distributed evenly. Tighten all four screws until the globe is firmly positioned.

**Power tools shall not be used in any circumstances!**



## Dimensions

External dimensions:



## Commissioning

The luminaire should be inspected according to company routines. The manufacturer suggests regular check for water intrusion/ condensation which should be removed immediately.



Description	Part No
Complete low globe assembly, green	6597
Complete high globe assembly, red	4417
Complete fastening ring	4249
Mean Well LPC-20-350 – new model	50890047
LED driver 24 V AC / V DC – old model	4399
Globe gasket, silicon	50010021
Complete connection assembly	4246
Cable gland E xe E204/622 M25/D Kit 11,0-20,1 mm, 9mm brass	6222502
Stopping Plug Exe TEF794/650 M25/9mm w/Lock Nut, Brass	6502502

## Maintenance and cleaning

Clean only with a damp cloth, water and mild detergents. Avoid chemicals with high or low pH, abrasives, high pressure washer, strong detergents, solvents, petroleum- or alcohol based cleaning agents and similar. Avoid any corrosive media.

## Disposal

### CAUTION

This equipment or part of this equipment is considered EE-Waste, and shall be handled accordingly

- Observe national and local regulations and statutory regulations regarding disposal
- Separate materials when sending it for recycling
- Ensure environmentally friendly disposal of all components
- No component or packaging shall end up in the ocean during any stage of the product's lifetime

**Compliance/Conformity**

- Complies with: ICAO Annex 14 Vol. II
- Low type complies with: IMO on 150mm height restrictions of IMO



**TRANBERG**

## EU Declaration of Conformity

R. Stahl Tranberg AS, Strandsvingen 6, 4032 STAVANGER - NORWAY

Declares in its sole responsibility that the product:

Luminaire

Type(s):

Tranberg TEF2440 series with LED light source

Is in conformity with the following directives and standards

### Directive(s)

2014/35/EU LVD Directive  
2014/30/EU EMC Directive  
2011/65/EU RoHS Directive

### Standard(s)

EN 61347-2-13:2014  
EN 55015:2013  
EN 50581:2012

Marking:

CE

EC Type Examination Certificate(s):

Product standards according to Low  
Voltage Directive:

EN 61347-2-13:2014

Other relevant directives:

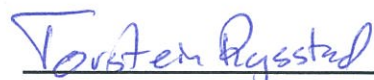
Other relevant standards:

The technical documentation for this equipment is retained at the following address:

R. Stahl Tranberg AS, Strandsvingen 6, 4032 Stavanger, Norway.

Stavanger, 02.07.2017  
Place and date

  
Terje Sørtun  
Quality & HSE Manager

  
Torstein Rysstad  
Discipline Lead Electronics