



Installation Manual

Searchlight

TEF 2620/2630 Xenon

Document properties (TUM3275)

Revision	Comment	Revision date	Approved
E	New Design	29.09.2022	CKR

Installation and operating manual

Contents

Document properties (TUM3275)	1
Warnings and risk levels.....	4
General information	4
General Warranty Certificate	4
Marking and intended use	5
Special conditions for safe use.....	6
Technical data searchlight.....	7
Technical data Xenon PSU Technical data Panel.....	8
Product description.....	8
Transport and storage	8
Mounting and installation.....	9
Mounting	9
Electrical connections	9
Operation.....	10
Maintenance and cleaning.....	11
Disposal.....	12
Drawing 600A103538 – Lamp housing Xenon Searchlight	13
Drawing 600A104043 – Part List for Lamp housing Xenon Searchlight.....	14
Drawing 600A104043 – Part List for Lamp housing Xenon Searchlight.....	15
Drawing 600A102289 – TEF 2620 Xenon Searchlight, Dimensions	16
Drawing 600A102292 – TEF 2630 Xenon Searchlight, Dimensions	17
Drawing 600A105275 – Dimensions Xenon Power Supply (IREM PX50).....	18
Drawing 600A106045 – Dimensions Xenon Power Supply (N3-80E & N3-100E).....	19
Drawing 600A102101 – Dimensions & Cut-Out for Control Panel.....	20
Drawing 600A104874 – Searchlight Head Xenon 1000W/1600W & 2000W.....	21
Drawing 600A110282–Searchlight Head Xenon 1000W/1600W & 2000W Auto Ignitor.....	22
Drawing 600A103354 – Searchlight & Panel, Wiring Diagram.....	23
Drawing 600A103350 – Wiring Diagram TEF 2610 Control Panel for 1000W	24
Drawing 600A103344 – Wiring Diagram TEF 2610 Control Panel for 1600W / 2000W	25
Drawing 600A103543 – Wiring Diagram Between Control Panel, JB, Power Supply.....	26

Installation and operating manual
TEF 2620/2630 Xenon Bridge (2630) - and Direct (2620) Operated

Drawing 600A105499 – Wiring Diagram Control Circuit Xenon 1000W 27
Drawing 600A105319 – Control Circuit Xenon 1000W..... 28
Drawing 600A103604 – Junction Box for Direct and Bridge Controlled Searchlight 29

Warnings and risk levels

DANGER

Non-compliance with the instruction results in risk of severe or fatal injuries to persons

WARNING

Non-compliance with the instruction may result in risk of severe or fatal injuries to persons

CAUTION

Non-compliance with the instruction may result in risk of injuries or damage to equipment

NOTICE

Non-compliance with the instruction may result in reduced lifetime of equipment, malfunctions etc.

General information

Before installation, make sure to read and understand this installation and operating manual.

Observe national assembly and installation regulations.

Always contact the manufacturer if anything is unclear, or if you notice any faults on the product or in this document.

This installation and operating manual shall be available to anyone operating, installing, inspecting, modifying or repairing the equipment.

General Warranty Certificate

R. Stahl Tranberg AS gives normally a general warranty on Tranberg products valid for 12 months from delivery date.

General the products will

- a) Confirm to the purchase order,
- b) Be free from liens, claims and encumbrances,
- c) Be free from failures or defects which may arise from defective design, materials or workmanship.

The warranty is based on that "The assembly- and maintenance instruction", attached with the product, is fulfilled, and does not cover damage caused by misuse or lack of proper maintenance and care.

Regards terms of delivery:

- Other agreements than standard terms of delivery are to be in writing.
- Official terms of delivery, NL-01 are valid.
- Regarding the bulb, please look at the warranty papers following the bulb. Fill it out and return with the bulb to R. Stahl Tranberg AS.

Marking and intended use

CAUTION

Not intended for use in "these" conditions (Where mud may be present, on helidecks, underground, direct sunlight, heavy vibrations, high risk of impact, harsh cleaning agents, high pressure washer etc.)



For use in Safe Areas

Special conditions for safe use

DANGER

Special conditions for safe use are critical conditions to maintain the safety of the equipment. These shall be adhered to in all cases and under all circumstances.

- The intense light output may damage eyes when stared directly into the light.
- Xenon light sources use an igniter located inside the searchlight head that produce a very high voltage when started. This is potentially lethal, and be careful to avoid any contact with the igniter, cables or the light source itself.
- Always handle xenon light bulbs carefully and without inducing any mechanical stress. Use appropriate safety gear when handling xenon light bulbs, such as protective eyewear. The xenon bulb has a high internal pressure. In case of explosion, fragments of the light bulb may be very dangerous.
- Any type of light source reaches a very high temperature. Do not touch if warm. Never touch with bare skin as this reduces light output.
- The motorized searchlight moves both vertically and horizontally. Be aware of any personnel close to the searchlight when testing or operating.
- Never use force to move the searchlight head on a motorized unit. This may damage the power train inside the motor unit.
- Never open a searchlight head while energized. High voltage is present.
- Always wait until light source and other components have cooled before touching any part.

Technical data searchlight

Model	Xenon 1000W	Xenon 1600W	Xenon 2000W
Dimensions:			
Length	570 mm	570 mm	450 mm
Width	497 mm	497 mm	598 mm
Height	717 mm	717 mm	842 mm
Height w/ pedestal	1523 mm	1523 mm	1648 mm
Weight searchlight only	36 kg	36 kg	42 kg
Weight pedestal	10,2 kg	10,2 kg	10,2 kg
Weight manouvrebar short	1,7 kg	1,7 kg	1,7 kg
Weight manouvrebar long	3,4 kg	3,4 kg	3,4 kg
Electrical:			
Line input voltage(*)	230 VAC 202-254 VAC		
Optical System:			
Lamp power	1000W	1600W	2000W
Lamp operating current	Max 50 ADC	Max 65 ADC	Max 70 ADC
Lamp life (approx.)	2000 h		
Luminous flux	32 000 lm	60 000 lm	80 000 lm
Divergence	1-2°	1,5-3°	1,5-3°
Theoretical range (@1lux)	6700 m	7400 m	9200 m
Reflector diameter	355 mm (14")	355 mm (14")	457 mm (18")
Focal point distance	69 mm (2 ¾")	69 mm (2 ¾")	83 mm (3 ¼")
Stahl Tranberg lamp part no	9400095	9400088	9400085
Lamp power supply	PX-50	N3-80	N3-80
Materials:			
Lamphouse	Stainless steel		
Base	Stainless steel		
Lens	Toughened soda-lime glass		
Mirror	Silver plated glass reflector		
Fork and lifting rod	Stainless steel		
Screw joint material	Stainless steel		
Surface treatment	Powder coated RAL 9010		
Ingress protection (DIN40050)	IP56		
Operating temperature	-50°C ... +50°C		

Technical data Xenon PSU

Model	PX-50N	N3-80E
Dimensions:		
Length	595 mm	360 mm
Width	245 mm	320 mm
Height	238 mm	770 mm
Electrical:		
Line input voltage(*)	230 VAC	230 VAC
Max. input current	11A	15,2A
Line type	1-phase	3-phase
Materials:		
Ingress protection	IP20	IP20
Operating temperature	0°C...+40°C	0°C...+40°C
Storage temperature	-20°C...+60°C	-20°C...+60°C

Technical data Panel

Model	2610
Dimensions:	
Length	121 mm
Width	96 mm
Height	62 mm
Electrical:	
Line input voltage(*)	230 VAC
Max. input current	11A
Line type	1-phase
Materials:	
Ingress protection	IP20
Operating temperature	0°C...+40°C
Storage temperature	-20°C...+60°C

Product description

The Xenon searchlight is suitable for all type of vessels with a high demand of light output. The Xenon searchlight is also excellent for use for narrow angles or long distance light.

Dimensions and lamp power depends on type of ship and area of application.

Transport and storage

- Transport and store the equipment only in the original packaging
- Store the equipment in a dry and vibration free place
- Do not drop!
- Always handle the Xenon light bulbs carefully and without inducing any mechanical stress.

Mounting and installation

DANGER

Incorrect mounting and installation may lead to risk for falling objects, risk for electric shock or fire and risk for equipment malfunction. In turn, this can lead to severe damage and/or injuries.

Always use the safety covers supplied when handling xenon lamps. When handling the lamps without their safety covers, always wear safety goggles, a facemask and gauntlets with wrist protectors. Accidental breakage of the glass bulb can critically harm anyone within a radius of 10m and more.

Mounting

Consider the end stop of the horizontal movement; the end stop is placed at the connection box, i.e. when the light head is facing in the same direction as the connection box. Also, consider if there are sectors which should not be illuminated.

For xenon lights, also consider the lengths and placements of the high-current power supply and cables to the light bulb. Keep the cables as short as possible, cables longer than 40 m are not recommended. Also, keep the cables away from sensitive circuits. Do also take into consideration the ambient temperature and ventilation relating to the operating temperature of the xenon power supplies.

The searchlight is mounted to base with 8 PCS M10 bolts.

Electrical connections

Cabling to Xenon DC power supply: Cables longer than 30 – 40 m are not recommended. Also, keep the cables away from sensitive circuits. The total voltage loss at specified current should not be more than 3 – 4 volts (Note that the cable losses must be calculated for twice the length, since there are two conductors to the bulb). Cross section must be at least 10 mm² (each conductor), for longer distances and higher power lamps (> 1000W) 25 mm² is recommended.

Voltage losses (Nominal Values):

Type	Xenon 1000W	Xenon 1600W	Xenon 2000W
Lamp voltage	19 V	23 V	27 V
Current	50 A	65 A	70 A
Cross section	16 mm ²	16 mm ² / 25 mm ²	25 mm ²
L:10m	1.08 (x2)	1.40 (x2) / 0.89 (x2)	0.96 (x2)
L:20m	2.15 (x2)	2.80 (x2) / 1.79 (x2)	1.93 (x2)
L:30m	3.23 (x2)	2.68 (x2)	2.89 (x2)

Max. Current density: 4 A/mm² **Internal cable loss:** 1000W: 0.17 V, 1600W: 0.23 V, 2000W: 0.15 V

Adjusting the Xenon Power supply

See the manual for the power supply.

When the lamp is lit, the lamp power should be adjusted up to:

Type	Xenon 1000W	Xenon 1600W	Xenon 2000W
Current	< 50 A	< 65 A	< 70 A
PSU	PX-50N	N3-80E	N3-80E
Comment	By using the two switches 'off/low/high' and '1' - '6' (see dwg. 600A105275)	By using the hand wheel clockwise.	By using the hand wheel clockwise.

The current must be measured with a DC clip-on amp-meter on the cable between the power supply and the lamp unit.

Measure and adjust the current after turning on the lamp, then wait for about 10 minutes (after the system have reached thermal stability) and do another adjustment.

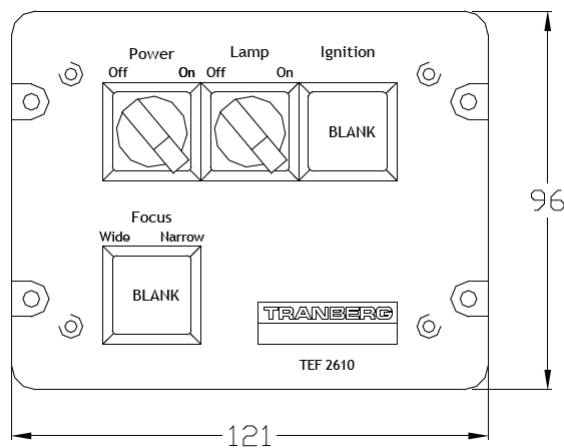
NOTE:

The on/off button (manual operation) on the side of the N3-80 must be set at 'OFF' (Otherwise, the power supply is always on).

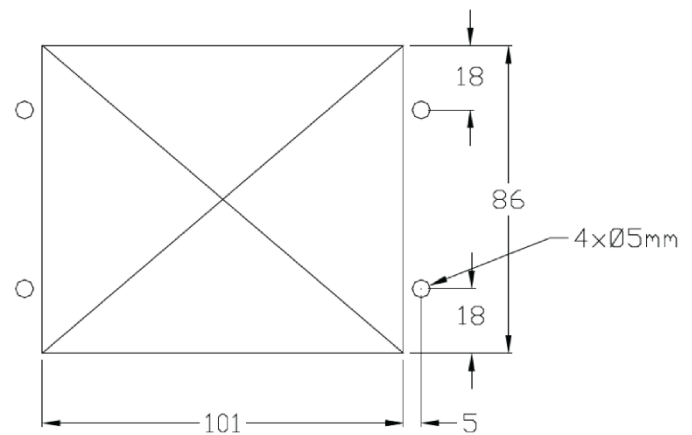
Operation

Panel description

TEF 2610 is a control panel for searchlight TEF 2620 / 2630, brigde- and direct operated.



Front of TEF 2610 Control Panel



Cut-Out for TEF 2610 Control Panel

Maintenance and cleaning

Panel:

The control panel may be cleaned with a mild detergent on any parts.

Searchlight:

Keep the searchlight and lens clean. Use only water and soft cloth to clean the searchlight. Clean the front glass / lens only when the light is off and has cooled down. If necessary, clean the mirror using alcohol. Ensure that all remains of the cleaning solvent are removed. Use only a soft cloth to clean the mirror.

Xenon lamp:

Never touch a lamp with bare fingers. Should the quartz glass bulb ever be inadvertently touched with bare fingers, remove the fingerprint immediately. Carefully clean the lamp with alcohol and a cotton swab or a lint-free cloth, after which the lamp should be rubbed dry, taking care not to scratch the quartz glass surface. If fingerprints are not removed, they will cause a weakening of the quartz glass and increased risk of bursting. Always use appropriate facial and skin protection.

Lubrication:

The lubrication point at the bottom of the U-pieces should be greased every two years. Use grease resistant to temperatures down to -50°C .

Mechanical

Check all external screws on the searchlight periodically and tighten if needed.

Control that the lamp house moves smoothly and with low friction both horizontally and vertically. Do not overtighten the four bolts in which the lamp house is hinged, as this may hinder the movement of the searchlight.

Electrical

Searchlight: Clean and inspect the electrical connections to xenon lamp periodically. A layer of oxidation can build up as a result of lamp heating and cooling. Also inspect the other high current connections for bad contacts and overheating.

Xenon Power Supply: See the manual for the xenon power supply regarding preventive maintenance and parts replacement schedule.

Xenon lamp change

1. Disconnect power to the searchlight and the xenon power supply.
2. Let the light and lamp cool for at least 15 minutes before opening the lamp house.
3. Wear protective cover including a facial protection and leather gloves. Note that xenon lamps have a high internal pressure in both the hot and cold state, and can explode if not handled carefully.
4. Loosen the positive contact front on the lamp, loosen the locking screw and then remove the front Teflon holder.
5. Put the safety cover over the lamp.
6. Unscrew the lamp from the negative contact (in front of the rear Teflon holder).
7. Change the lamp and reassemble in reverse order.
8. Be careful not to damage any parts. Check the lamp house gasket for leakage.

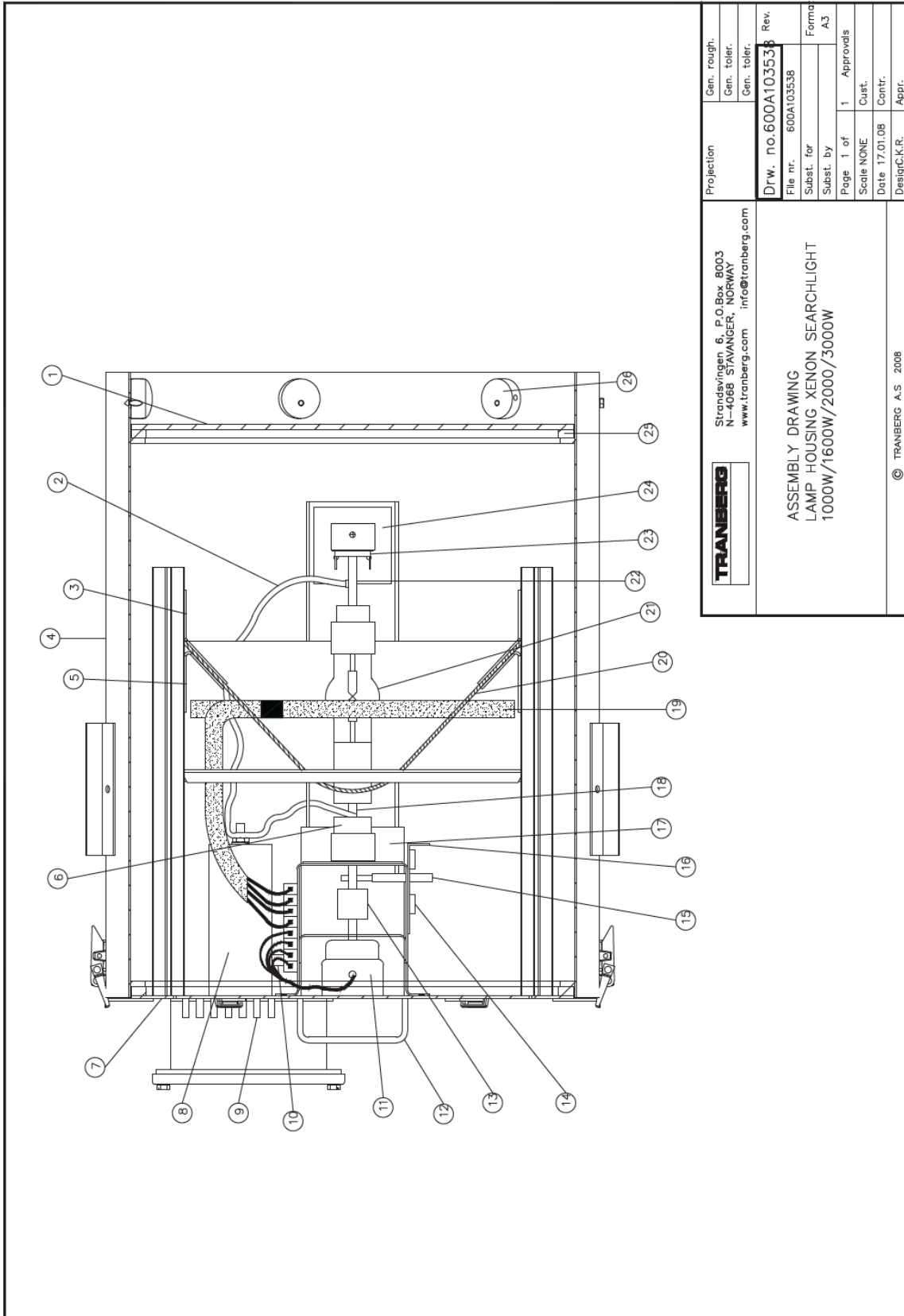
Disposal


CAUTION

This equipment or part of this equipment is considered EE-Waste, and shall be handled accordingly


- Observe national and local regulations and statutory regulations regarding disposal
- Separate materials when sending it for recycling
- Ensure environmentally friendly disposal of all components
- No component or packaging shall end up in the ocean during any stage of the product's lifetime

Drawing 600A103538 – Lamp housing Xenon Searchlight



	Strandsvingen 6, P.O.Box 8003 N-4068 STAVANGER, NORWAY www.tranberg.com info@tranberg.com		Projection Gen. rough. Gen. toler. Gen. toler.
	Drw. no. 600A103538 Rev.		File nr. 600A103538 Subst. for Page 1 of 1 Approvals Scale NONE Date 17.01.08 Design:K.R.
ASSEMBLY DRAWING LAMP HOUSING XENON SEARCHLIGHT 1000W/1600W/2000/3000W		Form A3 Cust. Contr.	
© TRANBERG A.S. 2008			



Drawing 600A104043 – Part List for Lamp housing Xenon Searchlight

POS	NUMB.	ART. NO.	DRAWING NO.	DESCRIPTION	DIM., MATERIAL
17	1	50860112		STARTER IREM AS 8030 230V 1000/1600W XENON	
		50860116		STARTER IREM AS 16040 2000/3000W XENON	
16	1	4581	600A102846	BRACKET FOR FOCUS SWITCH	AISI 304
15	1	5482	600A102852	FOCUS ARM	
14	2	50214041		END SWITCH	
13	1	4518	600A102412	CONNECTOR FOR MOTORFOCUS XENON	
12	1	98994007		HANDLE BLACK G/F	POLYPROPYLEN
11	1	56000112		FOCUS MOTOR	
10	1	50220010		CAPACITOR 230V 60Hz	
9	7	50229516		EMC FILTER	
				TYPE: 1280F-060	
8	1	50229515		EMC FILTER EPCPS	
				TYPE: B85 321A 2205A101	
7	1	4434	600A102253	BACKLID, WELDED 1000/1600W	
		5135		BACKLID, WELDED 2000/3000W	
6	1	4448	600A102408	LAMP FITTING XENON, REAR, TEFLON 1000/1600/200/3000W	
		4442		LAMP FITTING, REAR 2000/3000W	TEFLON BOLT Ø35
5	3	4502	600A102368	REFLECTOR CLIP, REAR 1000/1600W	AISI 304
4	1	4413	600A102254	LAMP HOUSING Ø450, WELDED 1000/1600W	AISI 304
		5122		LAMP HOUSING Ø540, WELDED 2000/3000W	
3	3	4501	600A102367	REFLECTOR CLIP, FRONT	AISI 304
2	1	50291191		WIRE TG 180 1000/1600W	
		50291192		WIRE TG 180 2000/3000W	
1	1	50450040	600A102008	FRONT GLASS 1000/1600W	HARDENED GLASS
		50450041		FRONT GLASS 2000/3000W	
PART-LIST					
				Strandsvingen 6, P.O.Box 8003 N-4068 STAVANGER, NORWAY www.tranberg.com info@tranberg.com	
				Projection Gen. rough. Gen. toler. Gen. toler.	
PART LIST FOR ASSEMBLY DRAWING LAMP HOUSING (600A103538) 1000W/ 1600W/ 2000/3000W XENON SEARCHLIGHT				Drw. no. 600A104043 Rev. C	
				File nr. 600A104043	
				Subst. for Subst. by	
				Page 2 of 3 Approvals	
				Scale NONE Cust.	
				Date 15.10.08 Contr.	
© TRANBERG A.S 2008				Design C.K.R. Appr.	

Drawing 600A104043 – Part List for Lamp housing Xenon Searchlight

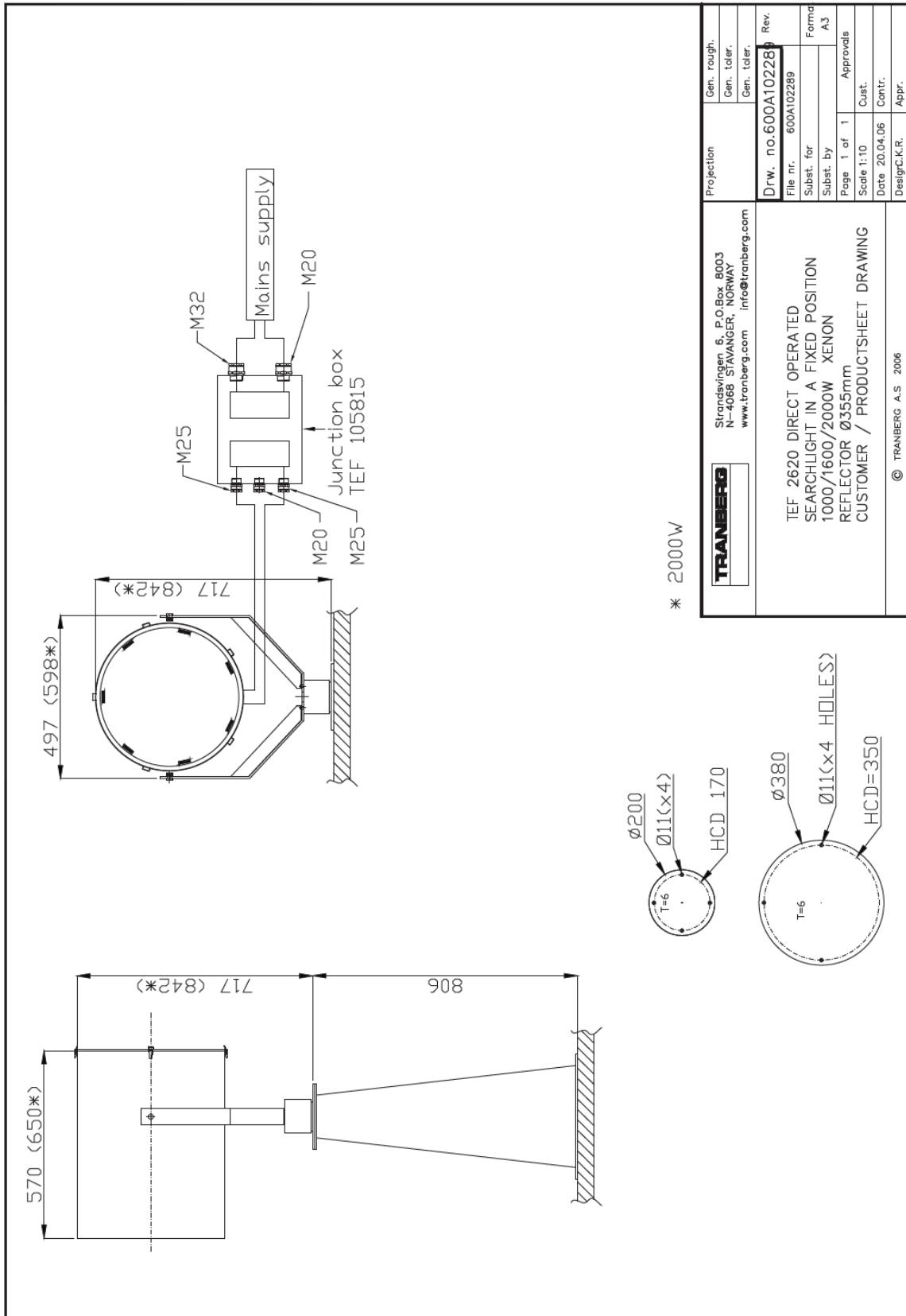
POS	NUMB.	ART. NO.	DRAWING NO.	DESCRIPTION	DIM., MATERIAL
26	7	4446	600A102009	SEAL FOR FRONT GLASS 1000/1600/2000/3000W	BOLT POM Ø35
25	3	98999072		RUBBER SEAL 1000/1600/2000/3000W	SILICON
24	1	4456	600A102252	LAMP FITTING, FRONT 1000/1600W	
		4621		LAMP FITTING, FRONT 2000/3000W	
23	1	4447	600A102284	LAMP FITTING XENON, TEFLON 1000/1600/2000/3000W	TEFLON
22	1	4517	600A102411	LAMP FITTING BRASS, FRONT 1000/1600W	
		4692		LAMP FITTING BRASS, FRONT 2000/3000W	
21	1	9400085		XENON LAMP XBO 2000W	
		9400106		XENON LAMP XBO 3000W	
21	1	9400095		XENON LAMP XBO 1000W	
		9400088		XENON LAMP XBO 1600W	
20	1	50890045		REFLECTOR 14" 1000/1600W	
		50890040		REFLECTOR 18" 2000/3000W	
19	1	4415		HEATER CABLE 1000/1600/2000/3000W	
18	1	4516	600A102410	LAMP FITTING BRASS, REAR 1000/1600W	BRASS
		4693		LAMP FITTING BRASS, REAR 2000/3000W	
17	1	50860133		ASC-5030 AUTOMATIC DC IGNITER FOR 1000/1600W XENON	
		50860134		ASC-12040 AUTOMATIC DC IGNITER FOR 2000/3000W XENON	

PART-LIST

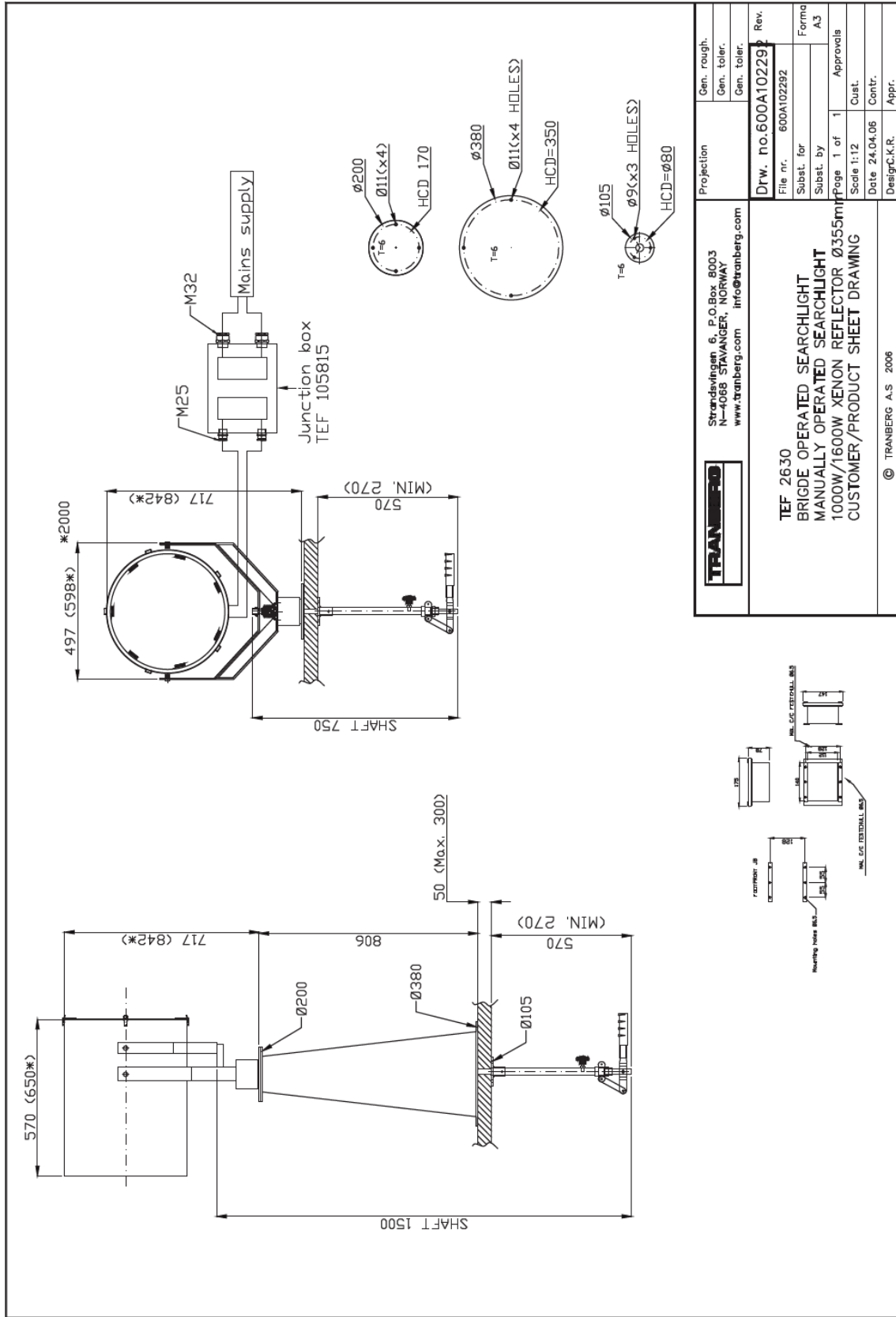
	Added ignitors for automatic ignition	08.06.16	BKF
SYMBOL	REVISION	DATE	SIGN.
	Strandsvingen 6, P.O.Box 8003 N-4068 STAVANGER, NORWAY www.tranberg.com info@tranberg.com	Projection	Gen. rough. Gen. toler. Gen. toler.
PART LIST FOR ASSEMBLY DRAWING (600A103538) LAMP HOUSING XENON SEARCHLIGHT		Drw. no.	600A104043
		File nr.	600A104044
		Subst. for	
		Subst. by	
		Page 3 of 3	Approvals
Scale	NONE	Cust.	
Date	15.10.08	Contr.	
	Design C.K.R.	Appr.	

© TRANBERG A.S 2008

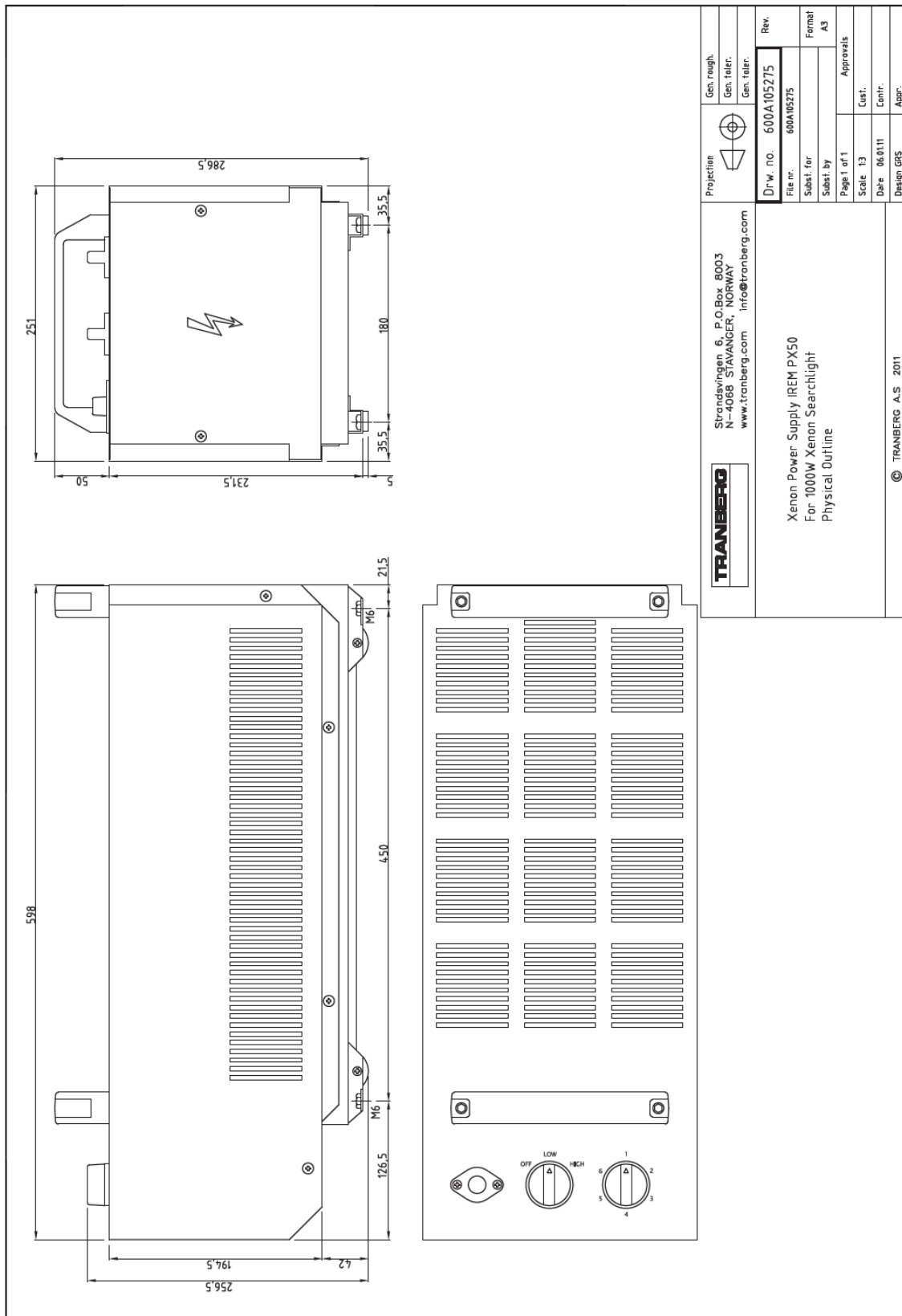
Drawing 600A102289 – TEF 2620 Xenon Searchlight, Dimensions




Drawing 600A102292 – TEF 2630 Xenon Searchlight, Dimensions

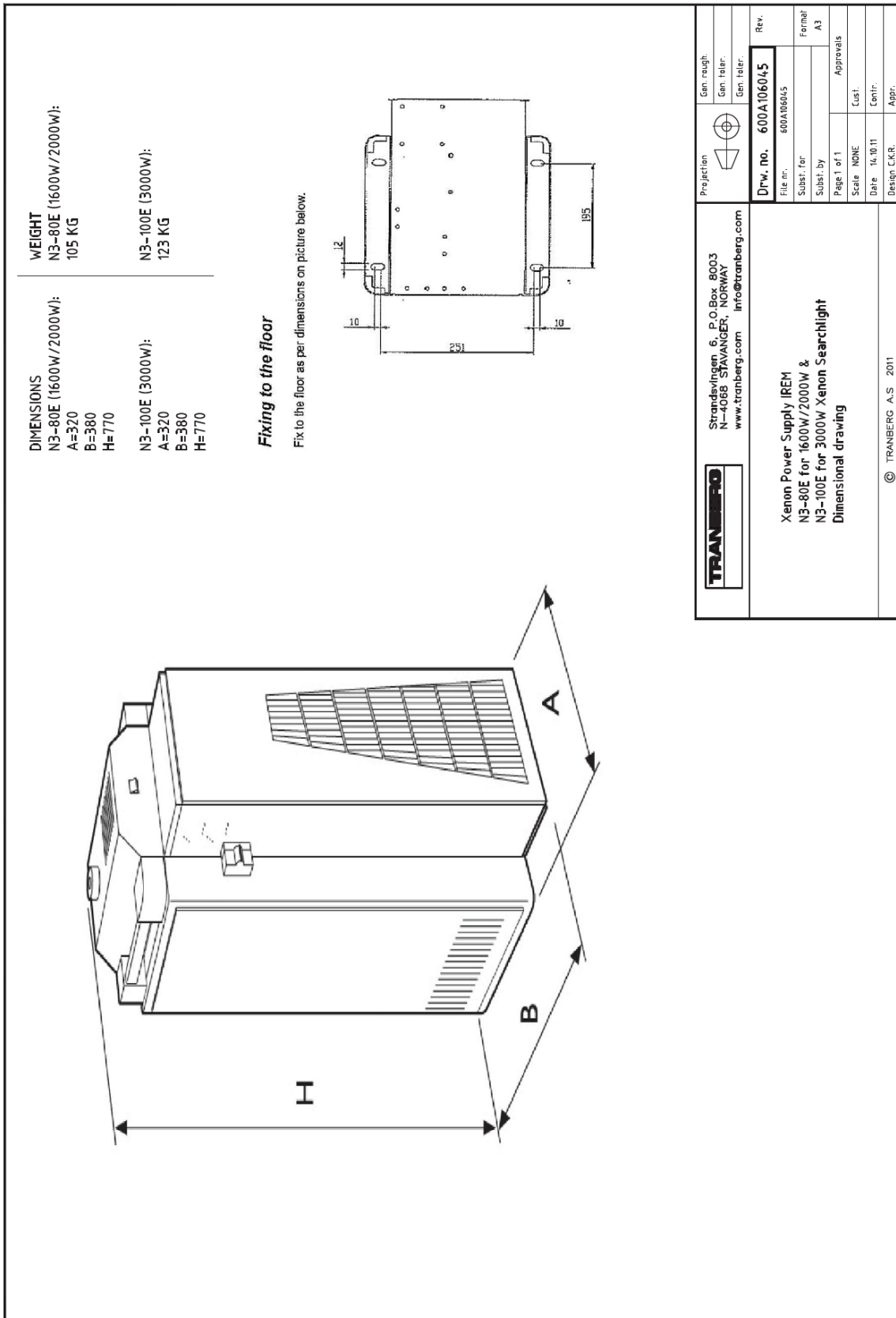


Drawing 600A105275 – Dimensions Xenon Power Supply (IREM PX50)



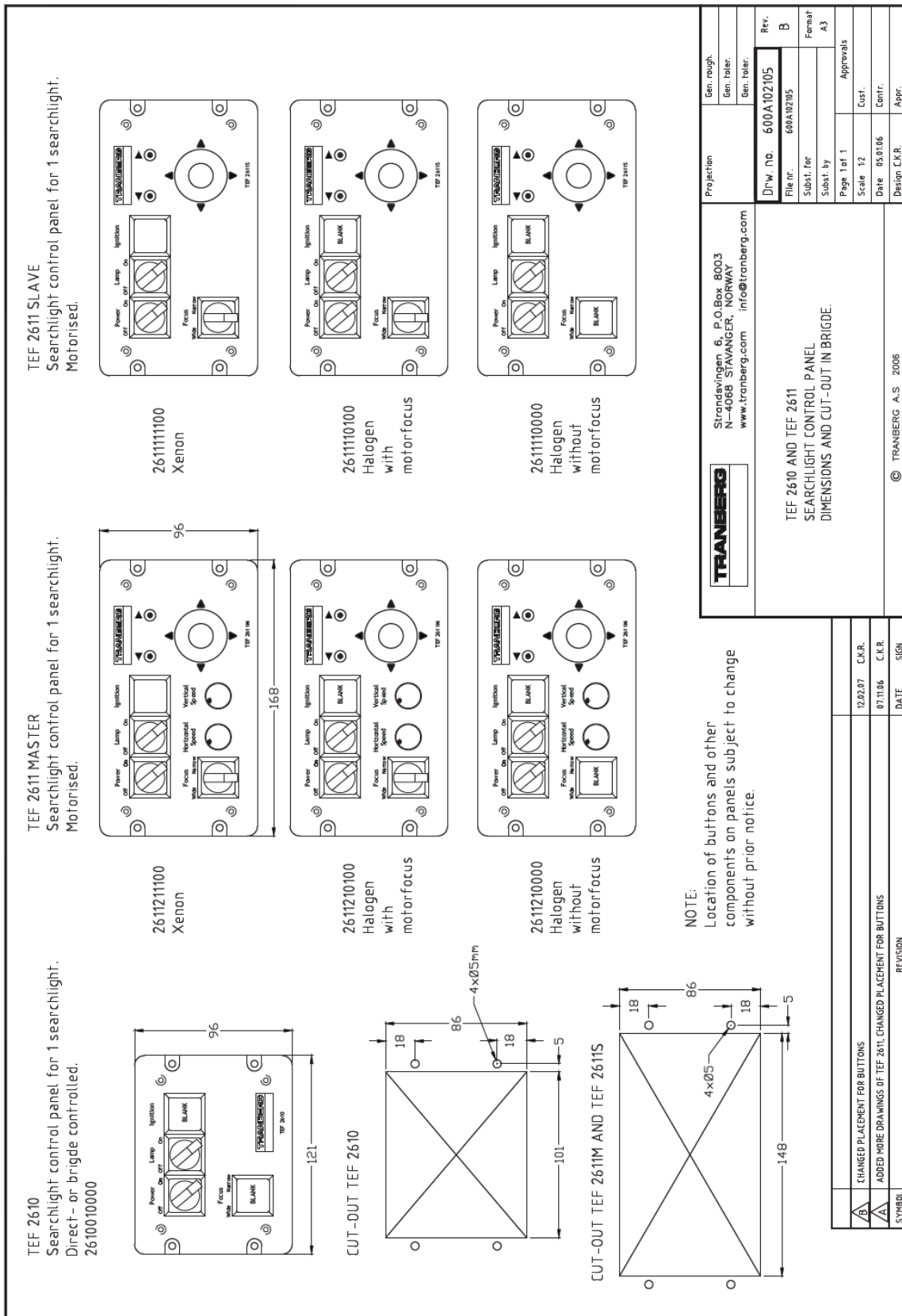
Gen. rough.	Gen. tel.	Gen. tel.	Projection	Rev.	Formal	A3	Approvals	Cust.	Date	06.01.11	Contr.	Appr.	
													File no.
Strandsvingen 6, P.O.Box 8003 N-4038 STAVANGER, NORWAY www.tranberg.com info@tranberg.com				Draw. no.	600A105275	Subst. for		Page 1 of 1	Scale	1:3	Design	GRS	
				Xenon Power Supply IREM PX50 For 1000W Xenon Searchlight Physical Outline				© TRANBERG A.S 2011					

Drawing 600A106045 – Dimensions Xenon Power Supply (N3-80E & N3-100E)



Projection	Gen. rough: Gen. toler. Gen. toler.		Rev.
Strandsvingen 6, P.O.Box 8003 N-4068 STAVANGER, NORWAY www.tranberg.com info@tranberg.com	Drw. no. 600A106045	File nr. 600A106045	
TRANBERG	Subst. for	Format	A3
	Subst. by	Page 1 of 1	Approvals
	Scale NONE	Date 16.10.11	Design C.K.R.
<p>Xenon Power Supply IREM N3-80E for 1600W/2000W & N3-100E for 3000W Xenon Searchlight Dimensional drawing</p>		<p>© TRANBERG A.S. 2011</p>	

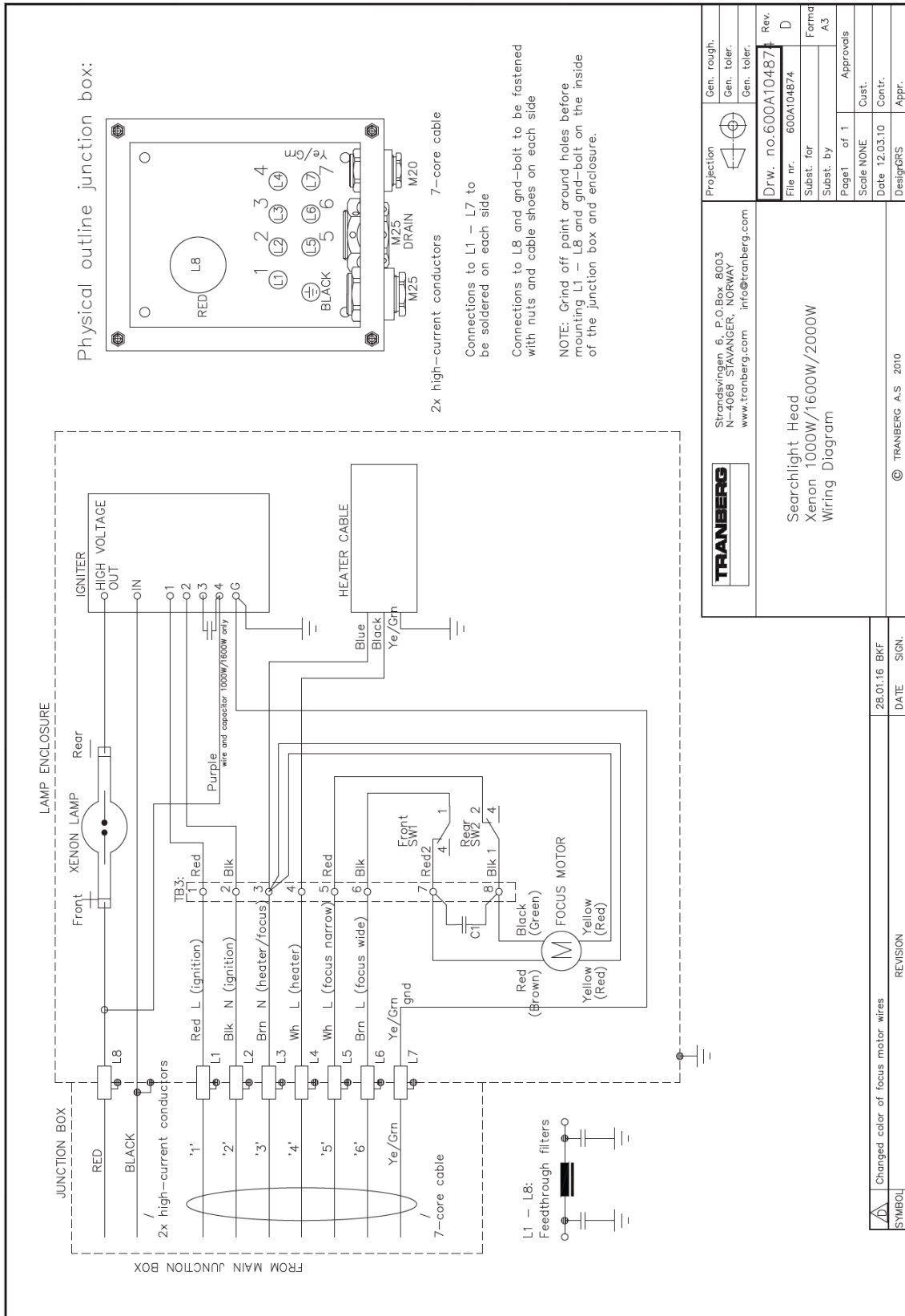
Drawing 600A102101 – Dimensions & Cut-Out for Control Panel



TRANBERG	Strandsvingen 6, P.O.Box 8003 N-4068 STAVANGER, NORWAY www.tranberg.com info@tranberg.com		Projection	Gen. rough. Gen. toller. Gen. toller.
	TEF 2610 AND TEF 2611 SEARCHLIGHT CONTROL PANEL DIMENSIONS AND CUT-OUT IN BRIDGE.		Drw. no. 600A102105	Rev. B
		File nr. 600A102105	Subst. for	Formaf. A3
		Subst. by	Page Tot 1	Approvals
			Scale 1:2	Cust.
			Date 05.01.06	Contr.
			Design C.K.R.	Appr.
			© TRANBERG A.S 2006	

REVISION	DATE	SIGN
A	12.02.07	C.K.R.
A	07.11.06	C.K.R.

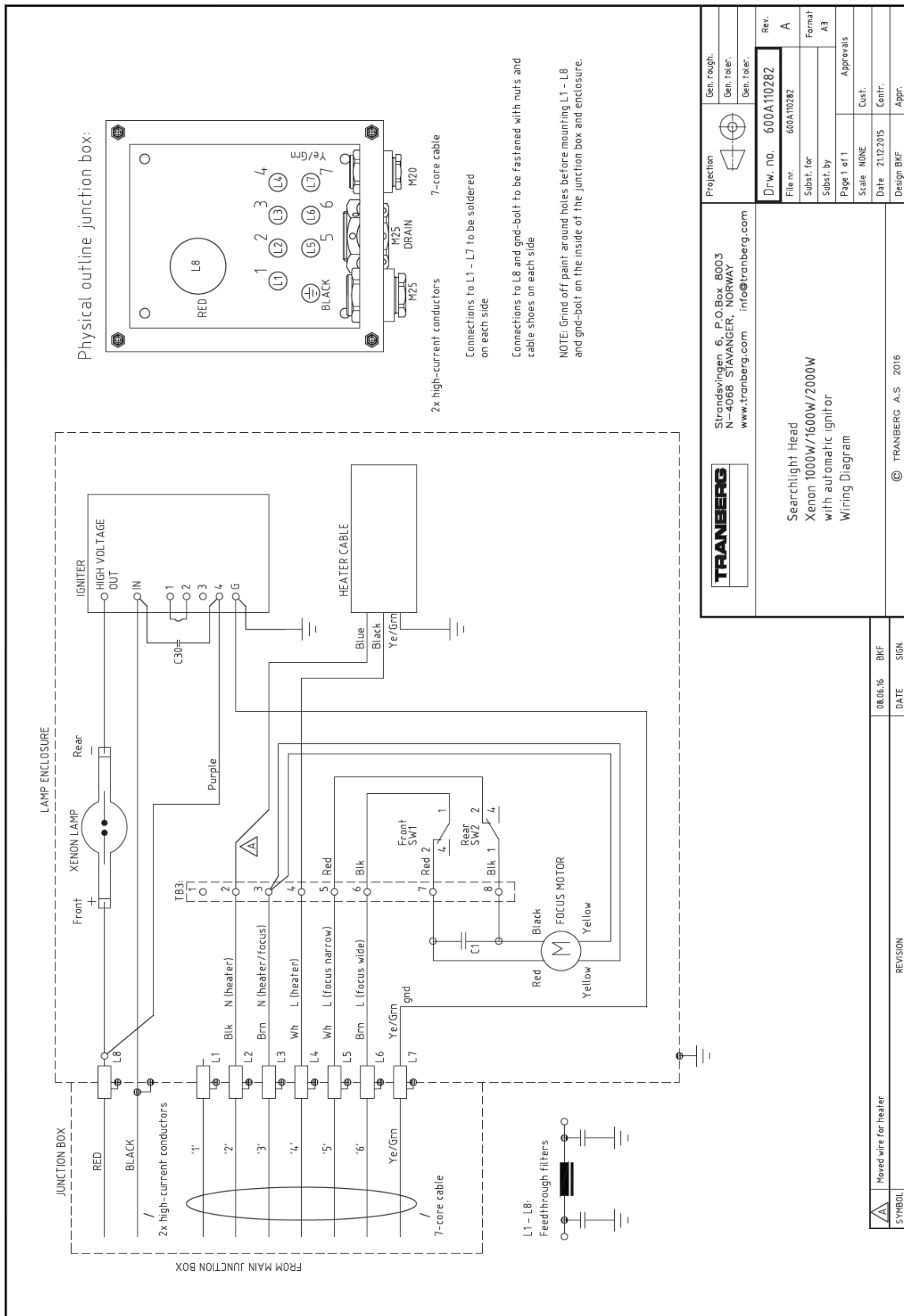
Drawing 600A104874 – Searchlight Head Xenon 1000W/1600W & 2000W



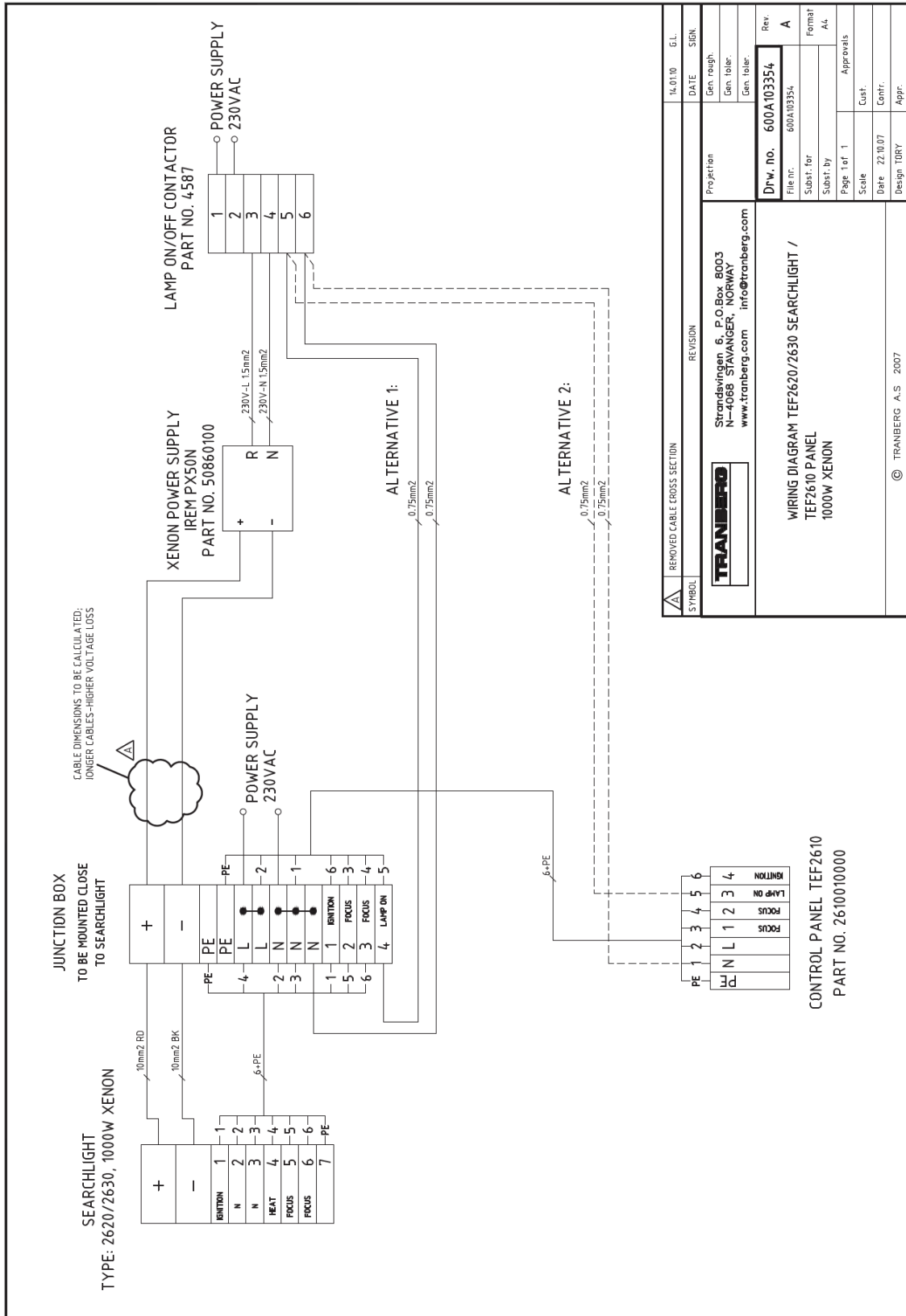
TRANBERG	Strandsvingen 6, P.O.Box 8003 N-4068 STAVANGER, NORWAY www.tranberg.com info@tranberg.com	Projection	Gen. rough.
		Gen. toler.	Gen. toler.
Searchlight Head Xenon 1000W/1600W/2000W Wiring Diagram		Drw. no. 600A104874	Rev. D
		File nr. 600A104874	Forma A3
		Subst. for	Page1 of 1
		Scale NONE	Approvals
		Date 12.03.10	Cust.
		DesignGRS	Contr.
			Appr.

28.01.16 BKF	DATE	SIGN.
Changed color of focus motor wires	REVISION	
	SYMBOL	

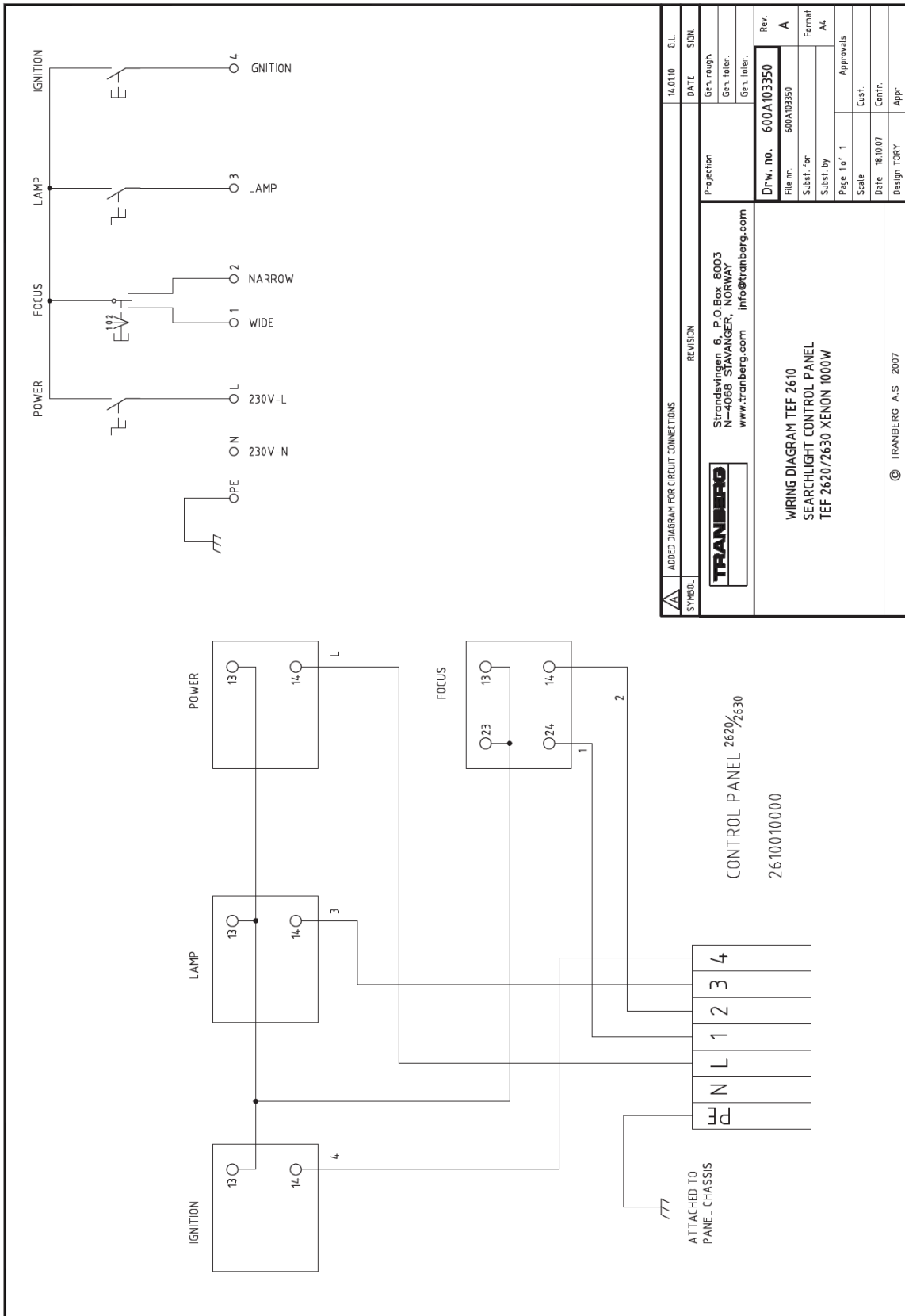
Drawing 600A110282–Searchlight Head Xenon 1000W/1600W & 2000W Auto Ignitor



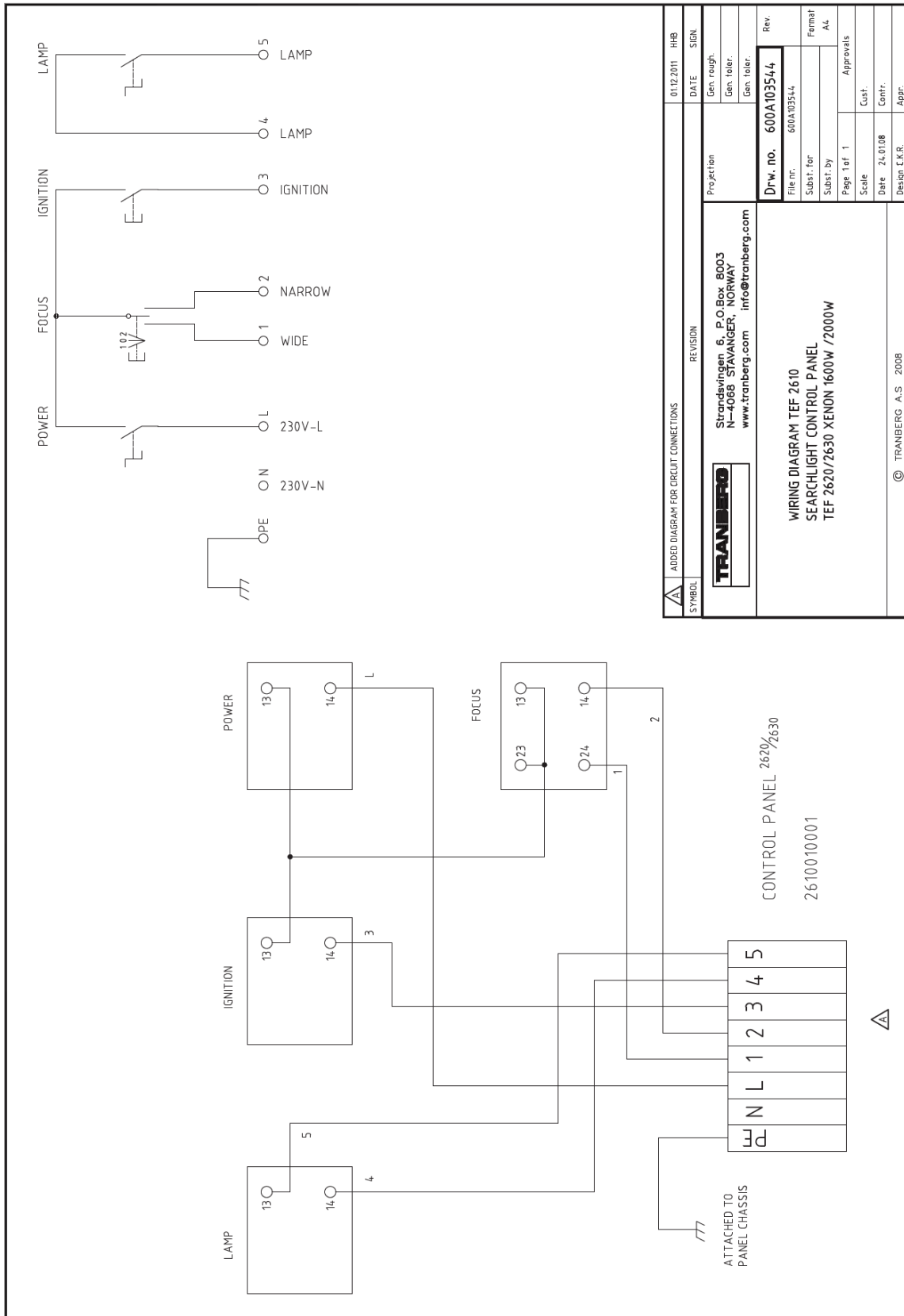
Drawing 600A103354 – Searchlight & Panel, Wiring Diagram



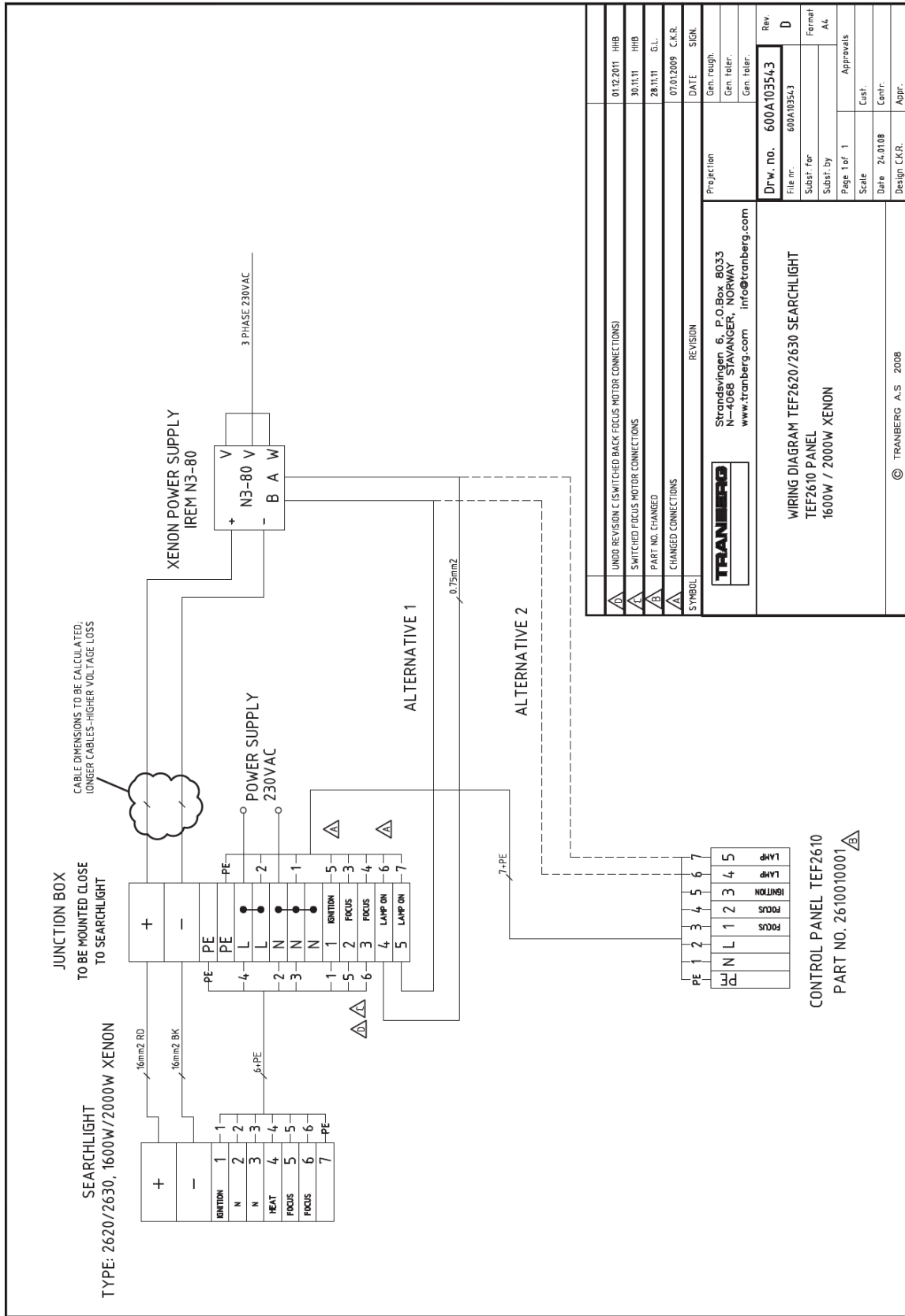
Drawing 600A103350 – Wiring Diagram TEF 2610 Control Panel for 1000W



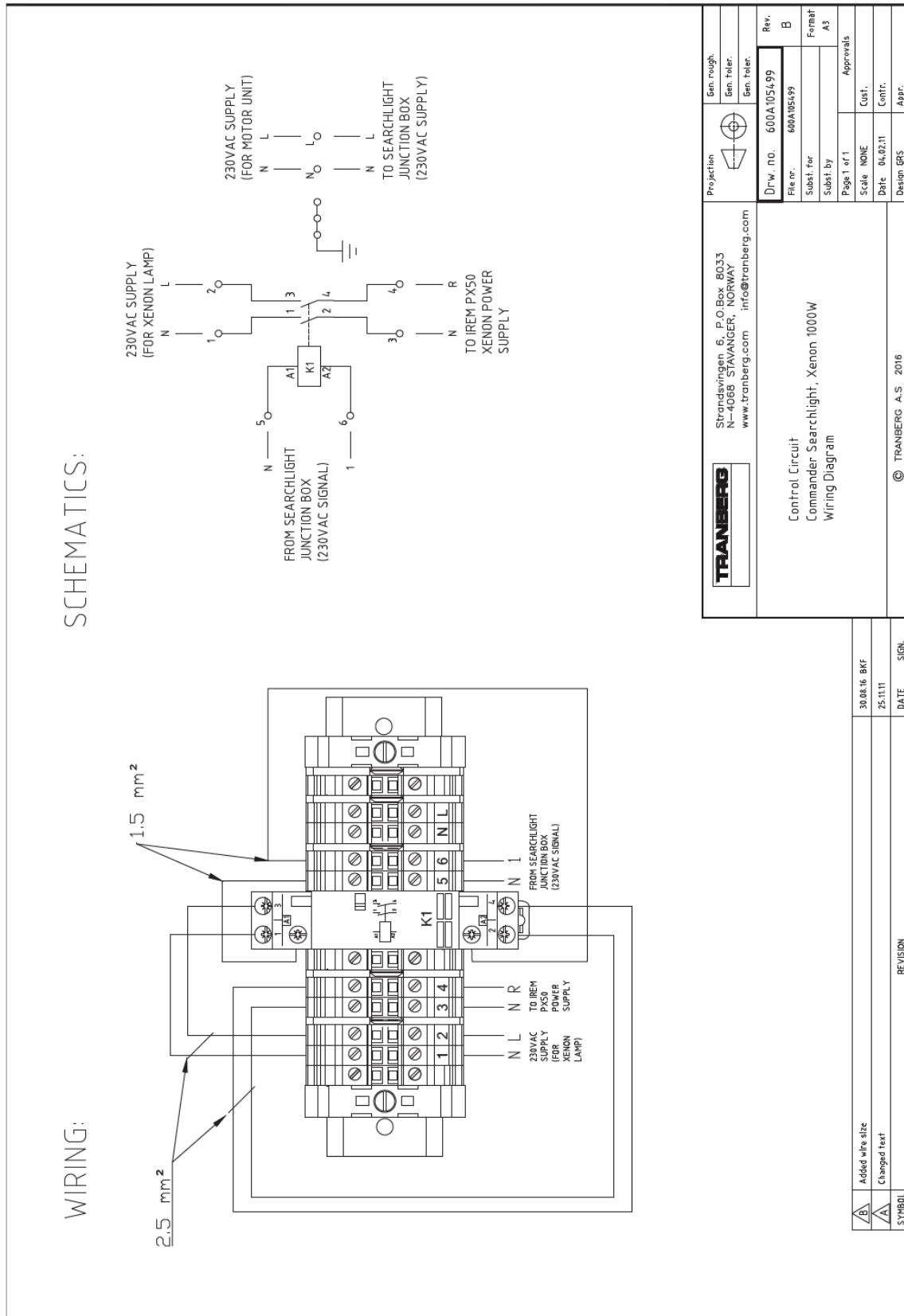
Drawing 600A103344 – Wiring Diagram TEF 2610 Control Panel for 1600W / 2000W



Drawing 600A103543 – Wiring Diagram Between Control Panel, JB, Power Supply



Drawing 600A105499 – Wiring Diagram Control Circuit Xenon 1000W



Drawing 600A105319 – Control Circuit Xenon 1000W

MARKING ON TERMINALS:
1 2 3 4 5 6 L N ⊥

ITEM NO.	Description	SW-File Name(File Name)	Part no.	QTY.
1	TERMINAL RAIL SS35 133MM	SS35_210MM		1
2	TERMINAL UT4	3044102_ut4_select		8
3	END PLATE	3047028_d_ut25-10_select		2
4	END HOLDER	0800886_e-ns-35-n_select		2
5	EARTH TERMINAL UT 4-PE	3044128_ut4_pe_select	50281328	3
6	CONTACTOR	600A105340	50231043	1

REVISIONS				
ZONE	REV.	DESCRIPTION	DATE	SIGN.
△	A	CHANGED TYPE OF CONTACTOR, ADDED MORE TERMINALS.	08.12.2010	C.K.R.

Strandsvingen 6, P.O.Box 8003
N-4068 STAVANGER, NORWAY
www.tranberg.com info@tranberg.com

Projection

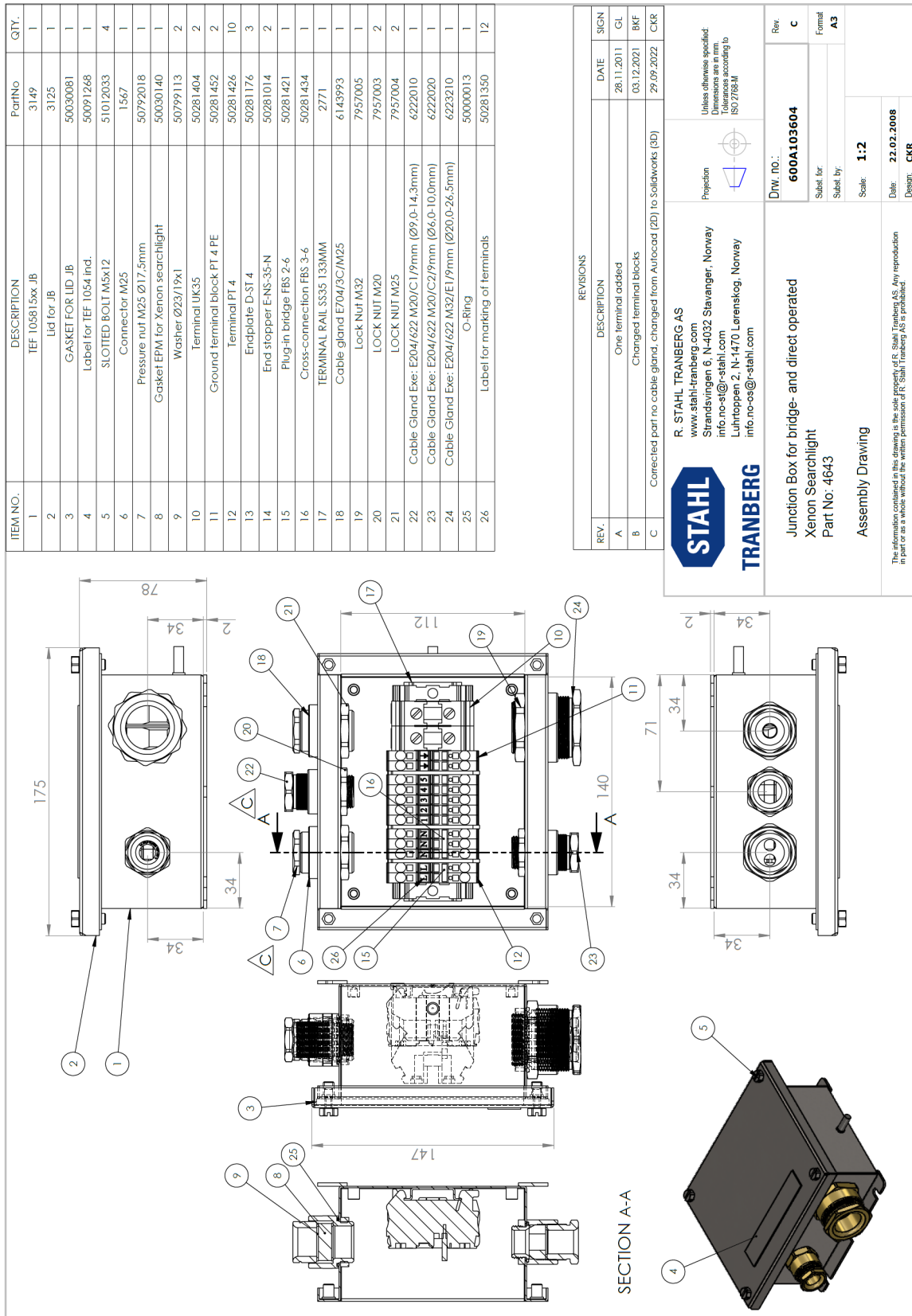
Unless otherwise specified
Dimensions are in mm.
Tolerances according to
ISO 2768-

Control Circuit, Xenon 1000W, 230VAC, IP20
SEARCHLIGHTS
PART NO: 4587

Drw. no. 600A105319		Rev. A
File 600A105319		Format A4
Subst. for		
Subst. by		
Page 1 of 1	Approvals	
Scale 1:2	Cust.	
Date 01.08.2011	Contr.	
Design C.K.R.	Appr.	

THE INFORMATION CONTAINED IN THIS DRAWING IS THE SOLE PROPERTY OF TRANBERG AS. ANY REPRODUCTION IN PART OR AS A WHOLE WITHOUT THE WRITTEN PERMISSION OF TRANBERG AS IS PROHIBITED. TRANBERG AS

Drawing 600A103604 – Junction Box for Direct and Bridge Controlled Searchlight



Installation and operating manual
TEF 2620/2630 Xenon Bridge (2630) - and Direct (2620) Operated

