

Instructions

LED - Navigation lights S64

Thank you for purchasing this product. We have done our best to provide you with a reliable and energy-saving navigation light, which has been carefully designed and tested according to our high standards.

Approvals

LED - navigation lights S64 have been tested, approved and certified by the Federal Maritime and Hydrographic Agency (BSH) of the Federal Republic of Germany and DNV GL according to the EU regulations.



0098

Installations instructions

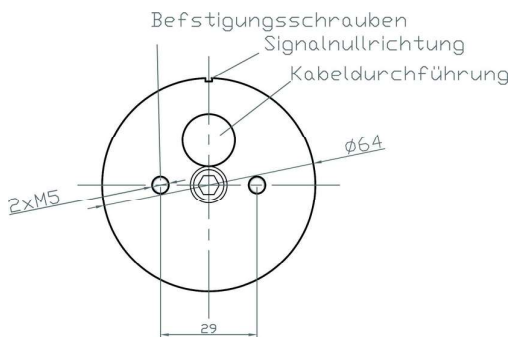
The lamp shall be installed in a possibly protected area using the appropriate fasteners (optional accessories). Please respect the signal null direction (marked at the bottom).

All signal lights must be installed according to the rules specified in COLREGs.

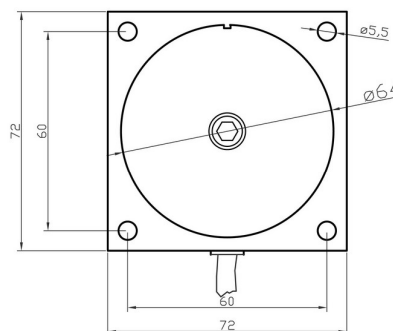
Mounting dimensions

For further details, please see the dimensions of the drawing. Bottom view:

Standard



Base



Cabling

Every LED - navigation light S64 is equipped with 1.5 m cable and is suitable to operate at 12V or 24V DC (except for the 5 and 6 nm masthead light, which operates at 24V DC only).

For the combined tricolour light/all-round light, cables are marked as follows:

brown	tricolour light	OR	red / black	tricolour light
blue	all-round light		blue / brown	all-round light
black	ground connection			

Double lamps: blue / brown upper light
 red / black lower light

Polarity is not important for other lamps.

Attention

S64 navigation lights contain no user-serviceable parts. Only the manufacturer can carry out the maintenance. Please do not open the navigation lights- this cannot guarantee the degree of protection IP67/68 and will void warranty. Please send back in case of failures.