

TRANBERG® FLOODLIGHTS

TEF 2561 Floodlight Sealed Beam

Safe Area



Tranbergs luminaires are all designed for use in rough environments. It is the policy of Tranberg to provide products and services that meet the highest standards of quality in the industry and the performance needs and expectations of our customers.

The design of Tranberg luminaires is based on many years of experience and extensive research in the field of professional Marine lighting.

Carefully selected materials are used to ensure maximum performance, low maintenance and a long trouble free life.

Application

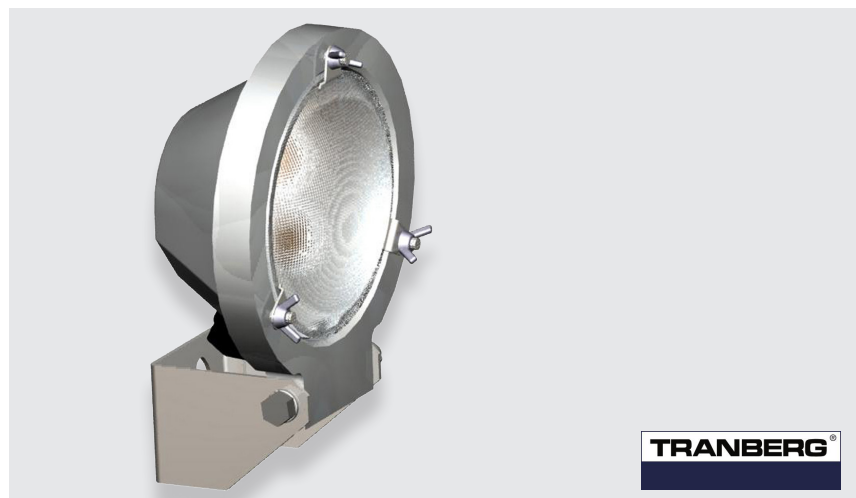
- Deck lighting
- Lifeboat stations
- Gangway light
- Emergency light
- Work light
- For use in safe areas

Features and benefits

- Rugged and low profile
- Simple to install and maintain
- Proven ingress protection
- Housing in solid cast aluminium with adjustable base in stainless steel
- Resistant to vibrations

Approvals and certificates

N/A



Technical Data

Housing:	Cast aluminium, with polycarbonate lens
Input voltage:	10 - 30 VDC (1,0A @ 14V - 0,5A @ 18V)
Light source:	PAR36 LED Flood
Light output:	1500 lm
Light distribution:	25 x 80 Degrees
Standard cable entry:	M20
Ingress protection:	IP 56
For use in zone:	Safe areas
Temp:	-40°C to +85°C
Weight:	1,04 kg

TRANBERG **STAHL**

THE STRONGEST LINK.

R. STAHL TRANBERG AS

Main office | Strandsvingen 6 | N-4032 Stavanger, Norway | T +47 51 57 89 00 | E info.no-st@r-stahl.com | stahl-tranberg.com
Oslo office | Luhrtoppen 2 | N-1470 Lørenskog, Norway | T +47 24 08 44 10 | E info.no-os@r-stahl.com | stahl-tranberg.com

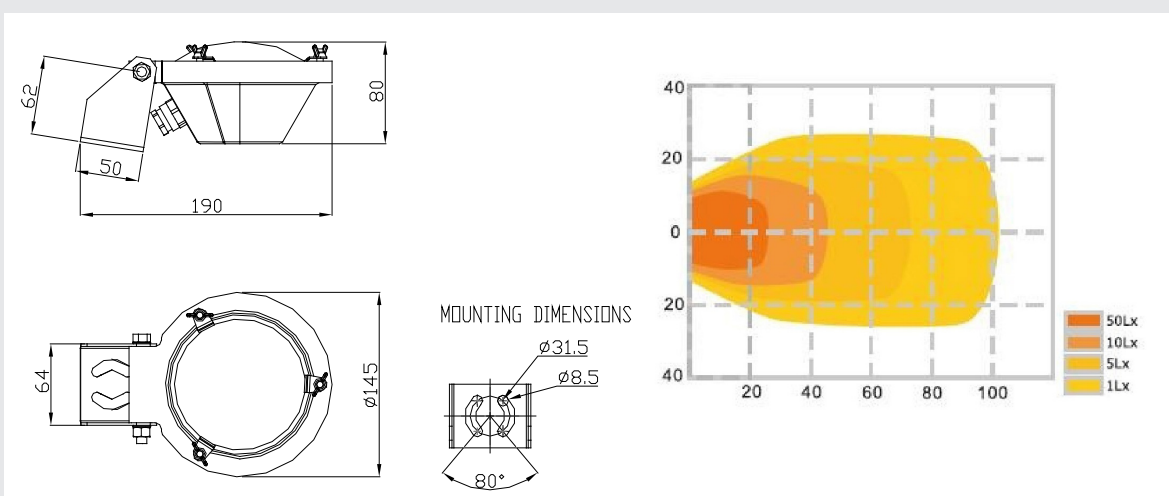
TRANBERG® FLOODLIGHTS

TEF 2561 Floodlight Sealed Beam

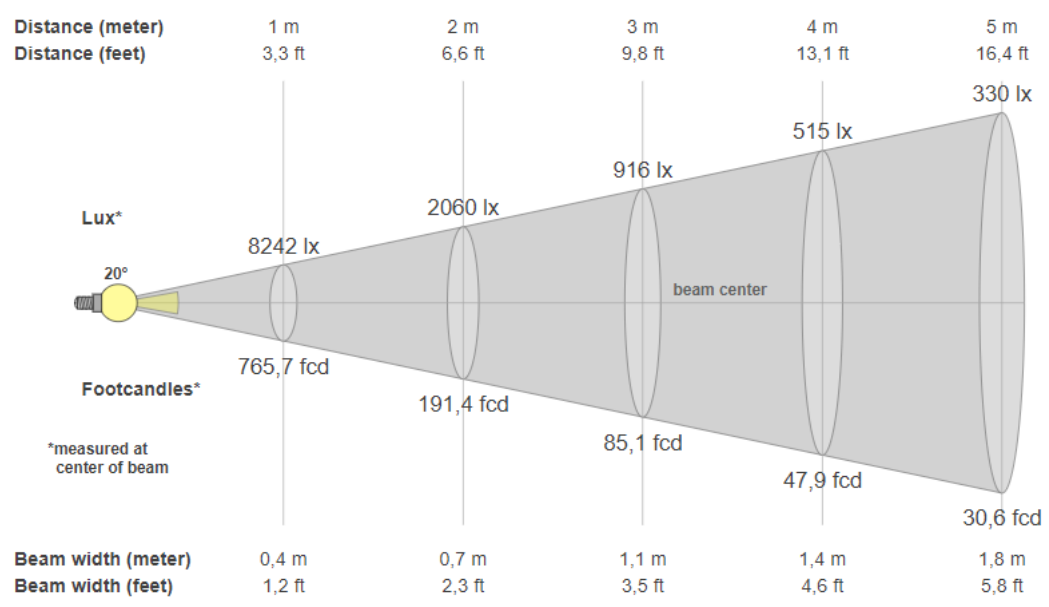
Safe Area

Description	Part No.
Floodlight 10-30 VDC 80° x 25° 18W	2561 005
Spare parts	Part No.
Light insert LED/PAR36 10-30VDC 80° x 25° 18W	9400 146

Dimensions



256A103102



R. STAHL TRANBERG AS
 Main office | Strandsvingen 6 | N-4032 Stavanger, Norway | T +47 51 57 89 00 | E info.no-st@r-stahl.com | stahl-tranberg.com
 Oslo office | Luhrtoppen 2 | N-1470 Lørenskog, Norway | T +47 24 08 44 10 | E info.no-os@r-stahl.com | stahl-tranberg.com