

LED LIGHTS FOR AQUACULTURE

-Better Safety for The Crew & Improved Welfare for The Fish



TRANBERG

STAHL

THE STRONGEST LINK.

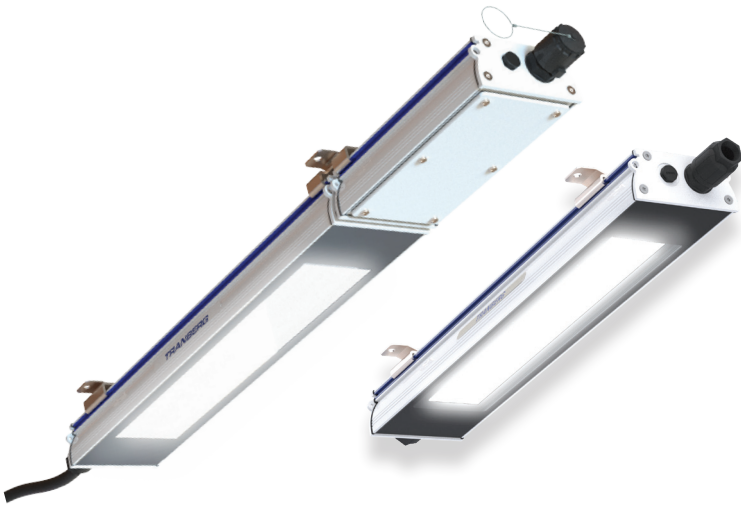
R. STAHL TRANBERG orange LED lights (2200 Kelvin) provides better safety for the crew and improves the welfare and health for the fish.

LED LIGHTS FOR AQUACULTURE

- Better Safety for The Crew & Improved Welfare for The Fish

TRANBERG® BlueLine Series ensures easy installation, a small footprint (light weight design), no maintenance and compatibility with existing infrastructure.

TRANBERG® BlueLine 2780 Decklight



Specially designed for LED with focus on thermal management, to obtain a market leading "Lumen per size" figure without compromising the life-span of the LED's. No maintenance such as replacing fluorescent tubes etc. A slender design with narrow glass ensures excellent resistance to heavy seas, wash-down etc.

- Battery backup for emergency
- Powder coated extruded seawater resistant aluminium
- Adjustable mounting brackets
- Color temperature Kelvin: **2200 K, 3000 K & 4000 K**
- Lumen: 2500 lm & 5000 lm

- Light distribution options: Medium, Wide & Ultra Wide
- 100-240 VAC - 25-50W
- Dimensions 25W: 694x120x72mm
- Dimensions 50W: 1026x120x72mm
- Dimensions 25W with battery backup: 821x120x72mm
- Dimensions 50W with battery backup: 1151x120x72mm
- Weight 25 W: 3,2 kg
- Weight 50 W: 4,7 kg
- Weight 25 W with battery backup: 4,5 kg
- Weight 50 W with battery backup: 6,0 kg

TRANBERG® BlueLine 2581 Floodlight



The highest quality, sustainable materials including seawater resistant aluminium and glass front. COB LED's from well-known manufacturers.

- High efficiency, high light output
- Maintenance free

- Plug and play, for fast and easy installation
- Color temperature Kelvin: **2200 K, 4000 K & 5000 K**
- Lumen: 5000 lm & 10 000 lm
- Light distribution options: Medium & Wide
- Cast seawater resistant aluminium, glass front
- 100 to 240 VAC and 24 VDC
- -40 °C ... +55 °C
- Light weight

LED LIGHTS FOR AQUACULTURE

- Better Safety for The Crew & Improved Welfare for The Fish

Orange LED Lights 2200 Kelvin

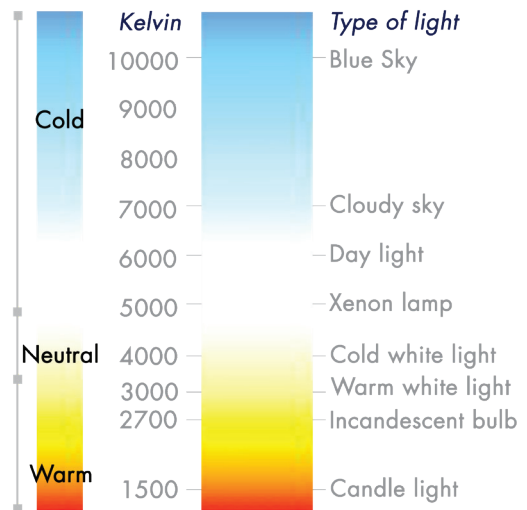
TEF 2580 and TEF 2780 are now available with a new color temperature of 2200 Kelvin.

The new color temperature is equivalent to the old HPS sodium color temperature and extends the range of various colors in our portfolio of floodlights and luminaires.

Our TEF 2580 and TEF 2780 floodlights and luminaires have been in the market for several years and are well known for their high-quality level with a lifetime of approx. 100.000 working hours.

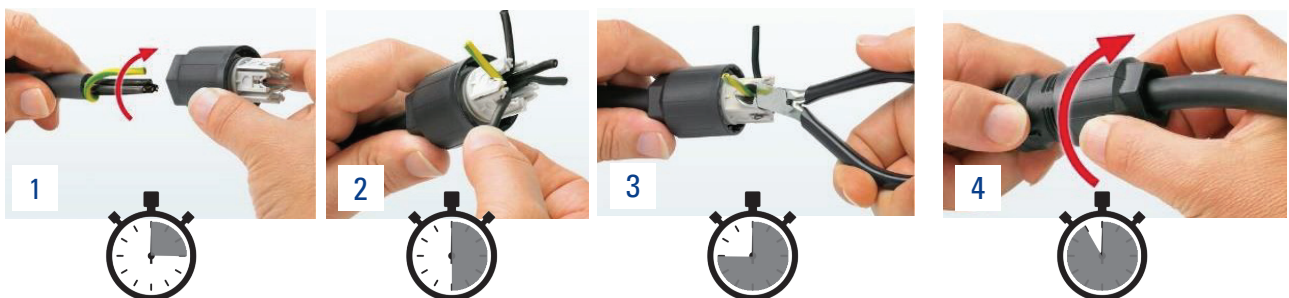
Kelvin (Color Temperature)

Kelvin (K) in a lighting context is describing the "warmness" of white light. "Cold / bluish" light has a high kelvin value and "warm / yellowish" light has a low kelvin value.



TRANBERG® BlueLine plug & play - Connect the cable in less than 1 minute

Photos courtesy of Phoenix Contact GmbH.





ABOUT US

Founded in 1901 as TRANBERG, R.STAHL TRANBERG is a leading provider of marine applications, explosion protection and system safety. As well as the TRANBERG® BlueLine Lighting Series, R. STAHL TRANBERG also manufactures and delivers a complete helideck lighting package, heat-tracing and anti-icing /de-icing equipment, and electro-mechanical products.

All products for hazardous areas are certified according to international quality standards, such as ATEX, IECEx and NEC.

Headquartered in Stavanger, R.STAHL TRANBERG is part of R.STAHL GROUP, which is based in Waldenburg, Germany, and has subsidiaries in 23 countries, seven production sites and branches in over 50 locations worldwide.



R. STAHL TRANBERG AS

Main office | Strandsvingen 6 | N-4032 Stavanger, Norway | **T** +47 51 57 89 00 | **E** info.no-st@r-stahl.com | stahl-tranberg.com
Oslo office | Luhrtoppen 2 | N-1470 Lørenskog, Norway | **T** +47 24 08 44 10 | **E** info.no-os@r-stahl.com | stahl-tranberg.com