



**R. STAHL TRANBERG AS**  
Strandsvingen 6  
N-4032 Stavanger, Norway  
T +47 51 57 89 00  
[www.stahl-tranberg.com](http://www.stahl-tranberg.com)





**TRANBERG**

**STAHL**

THE STRONGEST LINK.

# **TRANBERG MARINE LIGHTING SOLUTIONS**

Marine And Offshore Wind Applications



# RELIABLE SOLUTIONS FOR A SAFER FUTURE



## ABOUT R. STAHL TRANBERG

R. STAHL Tranberg has led technological progress since 1901. As part of the R. STAHL Group, we are a world leader in explosion protection and system safety solutions for the oil & gas, marine, and industrial sectors. We offer high-quality, long-term solutions and focus on smart innovation.

Our product portfolio includes marine lighting, complete helideck lighting packages, robust electro-mechanical products, and advanced heat-tracing and winterization equipment. These products are designed to meet the demanding requirements and conditions for both hazardous areas and harsh environments.

## OUR COMMITMENT TO QUALITY

We are dedicated to upholding the highest international quality standards. All our products for hazardous areas are certified according to ATEX, IECEx, and NEC standards. As a testament to our commitment to innovation and excellence, we are proud members of the OpenBridge consortium.

## OUR TEAM

Our success is driven by the passion and expertise of our employees, numbering between 60 and 70 professionals, who are committed to delivering excellence and innovation in every solution we provide.



## Energy

### When Reliability Matters

Discover our product range for offshore rigs. Junction and terminal boxes, heat tracing and cable glands



## Aviation

### When Safety Matters

Explore our aviation products for helidecks including Circle & H, control systems, windsocks and lighting



## Marine

### When Durability Matters

Discover our product range including lighting solutions and other controlling systems

## FEATURED PRODUCTS

### Navigation Lights



Navigation lights are critical to aid navigation and prevent accidents at sea. Tranberg is one of the leading suppliers of navigation light solutions and offers a wide range of navigation light and control panels for vessels from 12 to 50 meters.

### Searchlights



Searchlights have been a key product for decades. Tranberg offers a range of searchlights, from manual operated to more sophisticated solutions with remote control and operations.

With a proven technology and sturdy design, our searchlights are a sign of quality and safety for years.

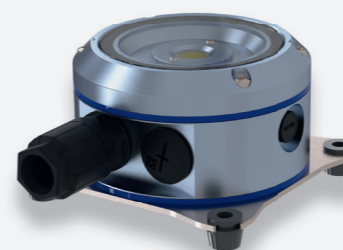
### Floodlights



Tranberg offers a range of floodlights designed and manufactured for marine applications.

TEF2581 with 5,000lm and 10,000lm light output is the latest addition to the range.

### Technical Lights



Watertight luminaires for marine applications, e.g.; open decks, handrails and seawater exposed applications.

TEF2760 is a linear light fixture in different configurations, whilst the TEF2785 is the newly added versatile light fixture, both designed and manufactured to meet harsh marine requirements.



# WHEN DURABILITY MATTERS



## NAVIGATION LIGHT SERIES AND CONTROL PANELS



### TEF2880 Blueline Navigation Lights

TEF2880 Blueline is our newest addition to a wide range of navigation lights. TEF2880 is maintenance free and available in single and double tier (duplex as spare). Designed for 24V DC power, it offers 100,000 hour operational lifetime (Duplex 2x100 000 hours) and the quick connector allows for a safe installation.

- Seawater resistant aluminium
- Built-in timer and alarm functions for failure and EOL
- DNV MED and DNV MER certified



### TEF4800 - TEF4900 Control Panels

TEF4800 is the newly launched control panel for less complex navigation systems.

TEF4900 is the alternative for more advanced systems. It is NMEA compliant – and integrable with other NMEA devices and bridge systems, and allows for a “plug and play” installation.

Both systems / panels are scalable - configuration and solution upon customer specification and approval.

## SEARCHLIGHTS



### TEF2650 Searchlight

Tranberg offers a range of searchlights, from manual operated to more sophisticated solutions with remote control and operations.

TEF2650 is available in Halogen, Xenon and LED technology. Remote operated with robust BUS control and RS-485 communication.

LED kit available as upgrade from existing 1000W and 2000W Halogen to LED.

- Up to 8 searchlights in network
- Up to 15 control panels in network / TEF2613 panel
- Optional gateway for remote control and monitoring
- Temperature range -52°C to +50°C / motor-house with self regulating heating cable
- TEF2650 in LED, meets FiFi requirement (size 51 version).



# When Durability Matters



## FLOODLIGHTS

### TEF2580 - TEF2581 Floodlights

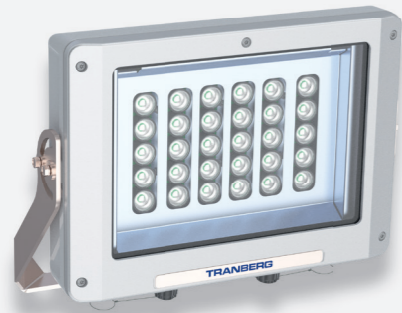
Tranberg provides a selection of floodlights engineered specifically for marine use.

Constructed from powder-coated, seawater and corrosion-resistant aluminum, the TEF2580 and TEF2581 series are ideally suited for marine and salt mist environments.

These floodlights offer light output options of 5000 to 10000lm (TEF2581) or 20000 to 30000lm (TEF2580) with a color temperature of 5000K and a CRI exceeding 70 (optional 2200K for TEF2581).

Featuring narrow, medium, and wide light distribution patterns, these lights are IP66/67 rated, operate on 220-240VAC (with optional DALI driver for control and dimming), and withstand temperatures from -40°C to +45°C.

Our floodlights are designed for a lifespan of 120,000 hours, TEF2580 and TEF2581 offer durability and performance for marine applications.

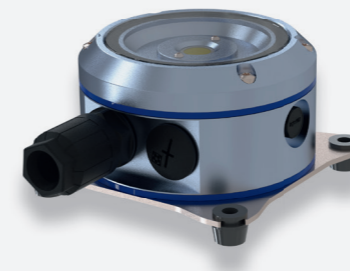


## TECHNICAL LIGHTS

### TEF2785 Technical Light

The TEF2785 is a robust, aluminum light fixture designed for diverse indoor and outdoor environments. With an IP66/67 rating, it's resistant to water and dust, and operates reliably in temperatures from -30°C to +45°C.

This versatile light delivers 2000 lumens at a neutral white 4000K color temperature, providing ample illumination. Whether wall or ceiling mounted, the TEF2785 offers flexible installation options. Its long lifespan, exceeding 80,000 hours for the LED and 100,000 hours for the driver, ensures enduring performance.



### TEF2760 Technical Light

The TEF2760 is a robust stainless steel light for demanding marine environments. The powder-coated white finish ensures easy cleaning.

- Stainless steel housing for outdoor, zinc-coated steel for indoor
- IP66 and IK10 rated
- 3-hour integrated emergency battery optional
- Opalic diffuser for reduced glare
- M20 cable gland with flexible options

Offering various mounting options, the TEF2760 delivers 3400lm or 6800lm with a CCT of 4000K (3000K option).

Designed for temperatures from -25°C to +45°C, it has a lifespan exceeding 70,000 hours and a LED driver lifespan of 100,000 hours.

Compliant with IEC 60092-306 standards.

